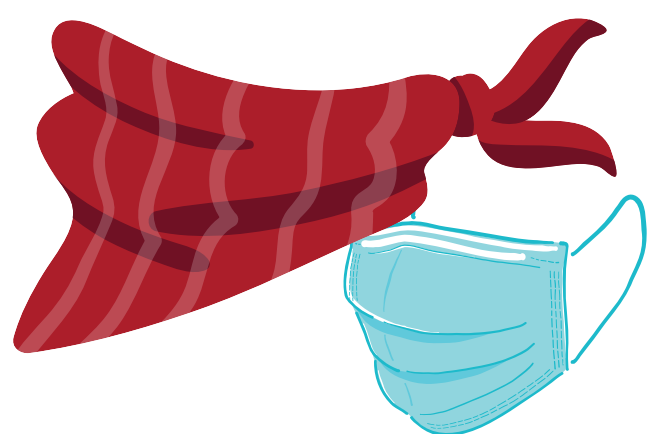


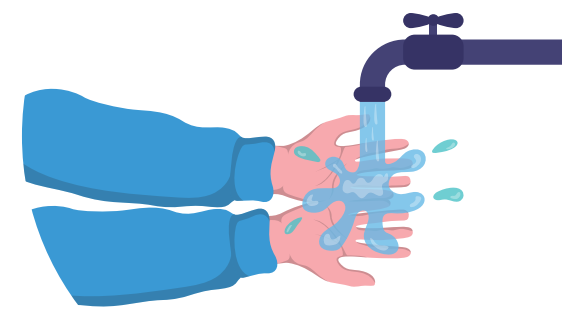
Masking Guidance for Patients and Visitors



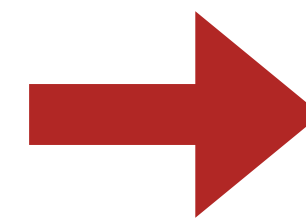
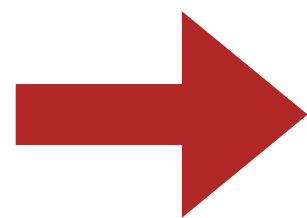
All patients and visitors are required to wear a mask while in common areas of Augusta Health and its clinics. Visitors should wear masks during in-person interactions with healthcare workers and when leaving patient rooms.



Wear your homemade or personal mask; if you do not have one we will provide you with a single mask



Wash your hands with soap and water for 20 seconds or use hand sanitizer, before and after putting on your mask



1

If using a surgical mask, put it on by grabbing the loops or ties

2

Pull the mask under the chin

3

Pinch the bridge of the nose



Hospitalized patients do not need to wear masks in their rooms

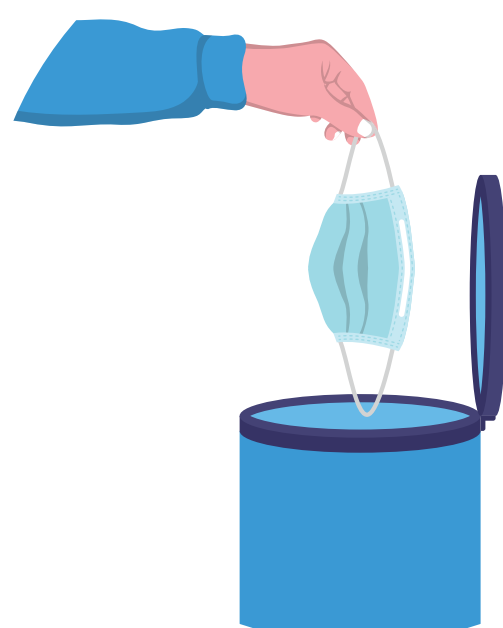


Wash or sanitize your hands before and after removing your mask



Remove your mask by the loops. To store, fold it lengthwise so that the outer surface is against itself and place in a clean paper towel or paper bag

If you are using a surgical mask, throw it away at the end of the day



If using a cloth mask, you may re-use by washing and drying it at the end of the day

