

2020 ANNUAL REPORT



POWERED BY Gratitude

Dear Friends of Augusta Health,

It probably goes without saying that 2020 was a year that we will not forget. Many of us learned new words and phrases like: herd-immunity, community spread, and contract tracing. The COVID-19 pandemic took the lives of loved ones and friends all too soon, and we lost the ability to gather with our families and those closest to us. We faced incredible challenges, frustrations and discomfort as daily routines and schedules were interrupted and we were forced to adapt to a “new normal.”

Yet, you, our most faithful advocates, donors, physicians, team members and volunteers provided the silver lining during this tumultuous storm. Your gifts of financial support, food for our hard-working staff, gloves, masks, gowns and other personal protective equipment were greatly needed. We continue to be extremely grateful for this outpouring.

While Covid-19 may have prevented us from our regular meetings with Women’s Giving Circle members, Business Partners, and from partaking in Chef Travis’s culinary creations at the annual President’s Reception, the Foundation made the best of it with new and innovative ideas to support critical patient needs that exist at Augusta Health.

Our first-ever *Gala to Go!* was a huge success with more than \$89,000 raised to support the renovation of the campus farmhouse which will provide space for nutrition education, fresh food preparation classes and more to diabetic and other patients in need of nutritional support.

On the following pages, you will learn about the incredible generosity that has made a difference in our patient’s lives — our littlest patients born of mothers with COVID-19 to Augusta Health physicians, nurses, caregivers and team members stepped up to take care of our community in unprecedented ways, with no end to the pandemic in sight. We’re also pleased to share a story of generations of family volunteers and their commitment to Augusta Health Hospice of the Shenandoah, as well as the Foundation’s partnership and support of a community-feeding program in Waynesboro Public Schools.

Thank you for your support — for being there when the times were toughest and every day in between. We are most grateful to you for your steadfast support of our patients and team members through gifts to the Augusta Health Foundation.

With Our Deepest Gratitude,



Robin Crowder, EdD

*Chairman,
Augusta Health
Foundation Board
of Directors*



Tami G. Radecke, CFRE

*Vice President-Community Partnerships,
Augusta Health

Executive Director,
Augusta Health Foundation*

OUR MISSION

AUGUSTA HEALTH FOUNDATION INSPIRES COMMUNITY OWNERSHIP THROUGH CHARITABLE GIVING TO ADVANCE HEALTH AND WELLNESS IN OUR REGION.



2020-21

Augusta Health Foundation Board of Directors

Robin Crowder, EdD, Chair
Debra Callison, Vice-Chair
Julie Plumbley, MD, Secretary/Treasurer

Debra Callison
Jason Clarke
Robin Crowder, EdD
Sharon Driscoll
Dana Flanders
Drew Gogian, EdD, MSN, RN
Leticia Hardy, MD
Homer Hite
Amy Hougan, MSN, RN, CNL
Nancy Kyler
Mary N. Mannix, FACHE
Margaret Nathe, RN
James “Jim” Perkins, PhD
Julie Plumbley, MD
Joan Ranzini
Paula Rau, PhD
Mandi Smith, JD
Billy Sowers
Daniel Sullivan, MD

Ex-Officio:

Laurel L. Landes,
Chair, Augusta Health Board of Directors
Tami Radecke, CFRE,
Augusta Health Foundation

Augusta Health Foundation
PO Box 1000
Fishersville, VA 22939
540-332-5174
ahfoundation@augustahealth.com
www.augustahealth.com/foundation

Augusta Health is a 501(c) 3 non-profit organization. Your gift is tax deductible to the extent allowed by law.



In Memory of John B. Davis

John B. Davis was a dedicated board member, volunteer and friend of Augusta Health and its employees. All mourn his loss and are incredibly grateful for his commitment to healthcare in the community, caring service and warm humor.

We honor his memory by dedicating the Foundation's 2020 annual report to him.

"John Davis contributed to this health system in so many ways," said Laurie Landes, Chair of the Augusta Health Board of Directors. "John had a particular interest in the well-being of our employees, and he was a strong advocate for them. I was privileged to work with him in his role as vice-chair of the board, and I loved his sense of humor. We laughed a lot, and I will miss that most of all."

John was an active member of Augusta Health's Board of Directors for more than 23 years. His most recent appointment was vice-chair, but he also served as chair of the Governance Committee and the Planning Committee, and as a member of the Medical Staff Credentials, Board Development, Compliance and Ad Hoc Property and Facilities committees. John and his wife, Patrice, were also enthusiastic supporters of the Augusta Health Foundation. John served on the committee that selected the Foundation's first Executive Director and Vice President, Tami Radecke.

"John was a great colleague on the board who was always committed to doing what was best for the community," said Augusta Health board member Reverend John Peterson. "He was compassionate with concern not just for patients, but also for the doctors, nurses and therapists who treated them, and the staff who cleaned the rooms and prepared the meals. He served humbly and with a good sense of humor, offered wise counsel and was integral in making Augusta Health a better caregiver for the whole community and a good neighbor in the community. He will be missed!"

A Learning Legacy

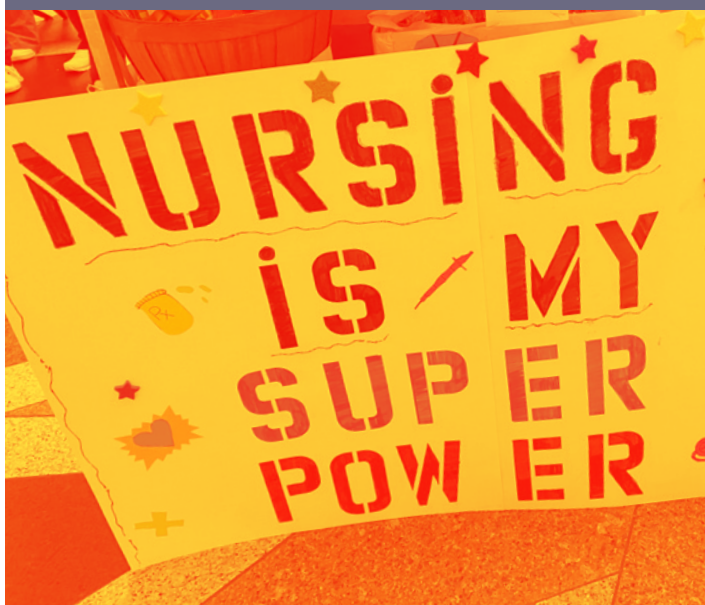
The John B. Davis Memorial Scholarship was established to provide an annual award to a graduating high school student from Augusta County, Staunton or Waynesboro who is pursuing a career in healthcare. John began his career as an educator in a local school district. The scholarship will be a lasting recognition of both his roots in education and his service to healthcare in the community. If you are interested in learning more about the John B. Davis Memorial Scholarship, please contact the Augusta Health Foundation.

“He was compassionate with concern not just for patients, but also for the doctors, nurses and therapists who treated them, and the staff who cleaned the rooms and prepared the meals. He served humbly and with a good sense of humor, offered wise counsel and was integral in making Augusta Health a better caregiver for the whole community and a good neighbor in the community.”



Notes of Thanks

There are not enough words of gratitude for those who took care of us during the Covid-19 pandemic. In addition to generous donations to help ensure Augusta Health team members received what they needed to care for patients and themselves, many people sent in notes of appreciation and encouragement to lift our team's spirits and let them know they were not alone or forgotten as they care for our community. While all were appreciated and touching, the youth of the community always seemed to bring the biggest smiles.



THE IMPACT OF Caring

Foundation Internal Grants are made possible by the caring community that stands with our Augusta Health family.

Caring for Newborn Patients

The community's support contributed to the purchase of an omnibed isolette for the Obstetrics/Pediatric units. The OB/Pediatric units had two isolettes, but with the COVID-19 pandemic, there was an increased need to safely administer a barrier method to protect infants from potentially COVID-19 positive mothers.

The assurance of protection for our smallest patients is a great comfort to parents and caregivers alike. Once COVID concerns are lifted, this isolette will be used to transport infants to the main operating room or other areas within the hospital and will eliminate the need for the setup of extra equipment. The omnibed can also be used for pediatric patients who need to be stabilized.

The Lavender Room

Reimagination and “out of the box” thinking has been a minute-by-minute practice at Augusta Health. The community sent a clear message of support for the well being of our team members, and we used that support to create the Lavender Room.

The Lavender Room was created to mitigate burn-out by providing a place of respite, relaxation and restoration. The aim is to decrease stress levels and enhance healthy coping. The Lavender Room consists of a comfortably furnished space within the hospital building where team members choose from various destressing and wellness activities and resources, or simply a quiet place to get away for a few minutes. The resources include massage chairs, music or silence, stress-reducing activities, and snacks.

We Care Closet

Many of our patients are not anticipating a hospital stay when they arrive at Augusta Health, and many times their clothing has been destroyed in an emergent situation. As a result, these patients have no clothing to wear home. Thanks to our generous donors, and the foresight of our team members who submitted a grant application to the Augusta Health Foundation, we can now offer our community the “We Care Closet.”



The “We Care Closet” is fully stocked with all-size tops, bottoms and personal care items. Requesting items from the closet is completely confidential for our patients. Staff members collect the needed size information to retrieve the clothing and personal care items from the closet. Patients can keep these items when they return home. To date, more than 180 “We Care” packages have been created for distribution into the community.

Get Fresh

In 2018, a collaborative project between Augusta Health, Waynesboro Public Schools, Project Grows, Virginia Cooperative Extension and Blue Ridge Area Food Bank was developed. The collaborative project, Get Fresh, is aimed at reducing Type 2 diabetes in school-aged children. These organizations work together to provide educational materials for in-classroom teaching, as well as food samples of fresh vegetables for the students to try — some for the first time. Complementing this initiative is a Families, Food and Fun activity held each week for four-weeks in the late afternoon, after classroom instruction has ended for the day, for twenty families. While the children are being taught about the importance of healthy food, the parents are learning to cook nutritious foods for their families. Each family leaves with a bag of fresh and healthy food to recreate the meal at home.

The really exciting news is that Augusta Health Foundation was awarded a \$100,000 USDA Farm to School grant for Waynesboro Public Schools to secure a customized concession trailer, or “trolley trailer”, that will be used as a community-feeding program tool in the underserved areas of Waynesboro. The grant was secured last July, but with COVID and the difficulty in getting equipment, the trailer took longer to outfit than previously expected. Now all the pieces are in place and this important project can make the impact it was designed to make.



▲ SCAN

A video tour of the trolley trailer can viewed at:
<https://www.youtube.com/watch?v=eTzgCiaGcpM>
or scan this QR code with your mobile phone.



“We are indebted to Tami Radecke for eight years of exceptional and transformational leadership to the Augusta Health Foundation,” said Mary Mannix, Augusta Health President and CEO, “I will truly miss Tami, her energy and passion for our mission. She has been an excellent colleague and I have learned much from her.”

Celebrating Tami Radecke

Trailblazer. Dynamo. Transformational.

Tami Radecke has been all that and more for the Augusta Health Foundation.

After eight years serving as Executive Director of the Augusta Health Foundation and Vice President of Community Partnerships, she retired this year, leaving an indelible imprint on the organization.

Radecke came on board in 2013 to lead the Augusta Health Foundation at its founding. She was previously serving in a similar role in Lewisburg, Pennsylvania, where she was Vice President of Community Relations and Chief Development Officer at Evangelical Community Hospital.

She took on the challenge of being the first executive director of the Foundation with grit and grace, raising more than \$9 million in new revenue during her tenure to support a wide variety of needs for Augusta Health and the community at large.

“Tami has been a real gift – not only to Augusta Health and the Foundation but to the greater community,” said Dr. Robin Crowder, Chairman of the Augusta Health Foundation Board of Directors. “Her insights and dedication to the health of the community have made a lasting impact, and we are grateful.”

Radecke’s list of accomplishments and contributions is long and incredibly meaningful to the Foundation. We call special attention to several of her outstanding contributions, which include:

- pioneering the hospital’s first-ever capital campaign, which earned more than \$2 million for the Emergency Department;
- engaging community influencers and leaders in support of the Foundation through the Augusta Health Signature Event, the Foundation’s President Society, Augusta Health Business Partners;
- establishing the Women’s Giving Circle, a 33-member group that provides philanthropic support for programs that care for local women;
- establishing the Augusta Health Employee Emergency Fund, which has provided more than \$125,000 to help employees experiencing financial hardship;
- raising \$400,000 since 2015 to support the Augusta Medical Group Medication Assistance program for the uninsured and underinsured;
- establishing the annual Nursing Leadership Awards, annual funding for Augusta Health’s new CNA program, and ongoing training and support for nurses;
- securing a \$1.1 million grant to support Augusta Health’s COVID-19 pandemic response;
- expanding the number of named endowments to support local high school students entering college;
- completing Augusta Health’s first Community Benefit audit to determine the level of existing health system community benefit and expand community benefit reporting; and
- establishing and growing more than 100 community partnerships throughout the region to address systemic community issues, such as programs to mitigate homelessness, teen pregnancy, food access, childhood diabetes, challenges among vulnerable and minority populations, and response and recovery efforts for COVID-19.

BY THE NUMBERS

Calendar Year 2020

LEADERSHIP GIVING

Augusta Health Board

100%

PARTICIPATION

Augusta Health
Foundation Board

100%

PARTICIPATION

Augusta Health
Executives

100%

PARTICIPATION



\$255,756

Emergency
Department



\$13,955

Employee
Emergency Fund



\$73,689

COVID
Relief



\$16,047

Grants and
Scholarships



\$261,246

Cancer
Services



\$210,059

Internal
Grants



\$84,202

Medication Assistance/
Prescription Relief



\$323,776

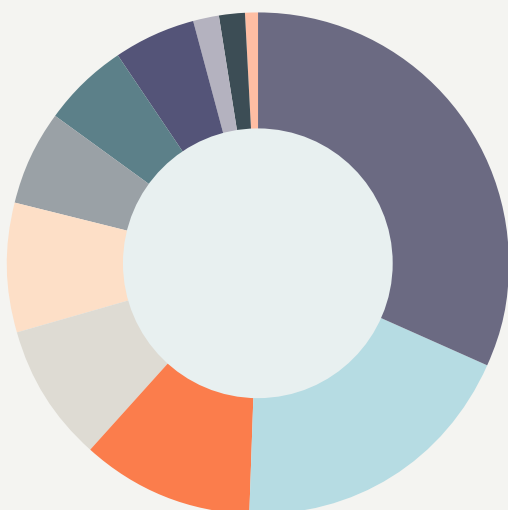
Hospice
Support



\$58,102

Restricted
Funds

GIFTS RECEIVED



AUGUSTA HEALTH FOUNDATION
January 1-December 31, 2020

Hospice Support	\$394,707
Grant Commitments	\$234,202
Patient Care	\$135,806
Augusta Health Farm	\$110,890
AH Restricted (specific programs)	\$103,892
Hospital Preparedness	\$76,200
Philanthropic Priorities	\$67,608
Employee Emergency	\$64,010
Cancer Care	\$20,433
Education /Scholarships	\$22,504
Other	\$8,123



THE AUGUSTA HEALTH
FOUNDATION IS
PLEASED TO SHARE
OUR PHILANTHROPIC
PRIORITIES WITH
THE COMMUNITY.

Philanthropic Priorities

Prescription Medication for Uninsured

With a grant from the Virginia Health Care Foundation, Augusta Health established its Medication Assistance Program (MAP) in 2015 to provide prescription medications to the un- and underinsured in our region. In 2019, Augusta Health's MAP provided more than \$5 million in brand-name prescription drugs to those in need. This program provides maintenance medications for patients with chronic diseases such as diabetes, hypertension and COPD. The reality of a six week wait from time of ordering to time of arrival from the drug manufacturer is a certain detriment to these patients.

A new Prescription Medication program is needed to support individuals who cannot afford their medications and who need lifesaving medications to "bridge the gap" during the six-week waiting period.

In 2019, Augusta Health provided more than \$41,970 in bridge medications to these individuals and a significant increase is expected in 2020 and 2021, due to the closing of the Augusta Medical Clinic.

PHILANTHROPIC NEED: \$100,000 annually





Prayer and Meditation Room

Prayer, contemplation, spiritual connection and a place for solitude are often sought out by patients, visitors and family members during difficult times. Taking care of others can also be stressful. Augusta Health caregivers and team members at times need a place of peaceful solitude to decompress, meditate or rest following a traumatic patient event or death. In many hospitals, a Meditation Room provides that quiet place for reflection and prayer.

Philanthropic support is needed to repair and renovate the existing Chapel located on the second floor of the main hospital, near the information desk. A new Prayer and Meditation Room would provide a place of rest and solace for those who need spiritual care or contemplation.

PHILANTHROPIC NEED: \$50,000 naming opportunity for complete renovation

Diabetes & Endocrinology Center

Augusta Health is expanding its diabetes and endocrinology practice and creating a new Diabetes & Endocrinology Center on its main campus. The new Center will include more clinical space for the care and treatment of patients and the addition of new providers joining our expert team of endocrinologists.

Patients with diabetes and endocrine disorders will be seen at the new Center, including those with thyroid disorders, metabolic syndrome, pituitary diseases, Type 1 and Type 2 diabetes. Individual education and support are critical success factors for many with diabetes. Certified dietitians will provide diabetes education and prevention services and create a one-stop-shop experience for patients. Our Diabetes and Endocrine Center team includes board-certified endocrinologists, Certified Nurse Practitioners and registered dietitians.

The new Center will include:

- Comprehensive care and treatment options for patients
- Eleven exam rooms
- Two treatment rooms
- Diabetes Educators located on-site
- Expanded consultation offices and diabetes education space

PHILANTHROPIC NEED: \$500,000 Diabetes & Endocrinology Center naming opportunity; other gifts of \$10,000 provide additional naming opportunities

Comprehensive Breast Center

Women from across the region count on Augusta Health's Women's Imaging Center for annual testing, care and treatment. A 13,000 square foot Breast Health Center with advanced technology and diagnostic testing will be located in the new Outpatient Pavilion, adjacent to the main hospital's Heart & Vascular Center.

The new Center has been designed with women in mind. It will offer the most advanced technology in a relaxing "spa-like" environment. Augusta Health's dedicated team of board certified mammography radiologists, registered technologists and team members will ensure comfort and comprehensive care throughout the visit.

The new state-of-the-art facility will include:

- Four mammography rooms, with another room included for future expansion
- One Dexascan room, with another room included for future expansion
- One stereotactic biopsy room
- Three ultrasound rooms
- Four exam rooms

PHILANTHROPIC NEED: \$1,000,000 Breast Health Center naming opportunity; other gifts of \$10,000 provide additional naming opportunities.





Village Commons at Augusta Health

This park setting will become a haven for anyone who visits Augusta Health. For patients and their families, it will be a safe space to reflect upon the challenges they may be facing. Augusta Health employees will find a quiet place to recharge while connecting with colleagues as they go about their daily tasks on campus. For caregivers and our community

at large, this space will provide a relaxing environment—offering benches and pathways throughout a 14,000 square-foot area—that showcases the tranquil beauty of the Shenandoah Valley.

PHILANTHROPIC NEED: \$250,000

Professional Development Fund for Caregivers

Expanding professional development opportunities for nurses and other skilled caregivers is critical to Augusta Health's mission of providing access to excellent care. As treatment modalities change and new training is needed for new or seasoned clinical team members, the Augusta Health Foundation has been an essential source of funding for training and professional development activities.

In the first half of 2020, more than \$50,000 was provided to support clinician and caregiver training and professional development to improve care provided to our community.

Examples of Augusta Health's clinical training and professional development activities:

- Certified Nursing Assistant on-campus program
- Registered Cardiovascular Specialty training
- Tobacco Treatment Specialist training
- Physician & Caregiver Resilience training
- Nursing Specialty Certification Preparatory Courses

PHILANTHROPIC NEED: \$100,000

Telehealth

In this age of technological ease and convenience, patients want to see or talk with their physician or provider from their home, office or while on vacation. Virtual visits, telemedicine and other technology-supported care and treatment modalities are becoming an industry standard for health systems, providers and patients.



There is increasing demand for remote communications technologies in our particular region. Factors for this growing demand include transportation challenges, time constraints visiting multiple specialists across a large, rural footprint and an aging population with chronic health issues.

Augusta Health had already made telehealth capabilities a priority with coordination and ease of access to care and treatment serving as a strategic focus. With the advent of COVID-19, telehealth capabilities were put into place quickly to ensure that patients in need of care could be seen and treated, while maintaining patient privacy and HIPAA compliance.

Examples of telehealth include:

- Patient to physician virtual visits for routine appointments
- Physician to physician consultations to treat a patient with multiple health issues
- Patient to multiple physicians for the comprehensive treatment of complex disorders

PHILANTHROPIC NEED: \$500,000

Augusta Health Farm House

Located behind the Augusta Community Care Building (ACC) is a 1.25 acre farm that provided more than 45,000 pounds of fresh produce in 2020. The AMI Farm at Augusta Health was established on Augusta Health's campus in 2018, and has provided vegetables and fruits for use in patient meals, food boxes for community neighbors who are food insecure, Augusta Health's Food Farmacy and diabetes prevention program, cooking demonstrations, and at the weekly Farmer's Market.

A circa 1910 farmhouse is located near the farm and is in disrepair. The building was purchased by the Augusta Health Board of Directors as part of the original parcel of land secured for the new Augusta Medical Center in 1988. This space offers a unique opportunity to provide a realistic farm to table experience only steps away from where fresh produce is grown and harvested.

Philanthropic funds are needed to renovate the farmhouse to include:

- Two classroom space for nutrition education;
- A fully-equipped demonstration kitchen for teaching fresh food preparations; and
- Farm staff work offices

PHILANTHROPIC NEED: \$250,000 for complete renovation



ONE HUNDRED PERCENT — that's exactly how much of your generous gift will go directly to the programs and initiatives that you support through the Augusta Health Foundation. While most not for profit organizations need significant portions of your gift to provide for administrative expenses — we're different. Thanks to our partnership with Augusta Health and their commitment to fund the operating expenses of the Foundation, your gift can now have maximum and lasting impact on the healthcare of our patients.



A Tradition of Care

Beverley “Bev” Carter Coffman is a self-identified hospice fan.

It’s not the typical way you hear one describe a place where people go for care during the final stages of life, but Coffman and her six siblings have a unique experience with hospice.

Augusta Health’s hospice care was a source of support and comfort for her brother, father, mother, and sister-in-law at the end of their lives.

“Hospice has just held our hand,” Coffman said. “The one thing about hospice that I love is that they taught me completely how to die and how to grieve. It’s been really helpful for me.”

The family’s connection to Augusta Health’s hospice care also runs much deeper than caring for their loved ones. The Carter family has been instrumental in developing the medical center’s hospice facility, Shenandoah House.

When Coffman’s father, the late Dr. Samuel Carter, retired from practicing medicine, one of the first things he did was join Augusta Health’s Hospice Advisory Board (HAB). He quickly became a central figure in developing the plans for the Shenandoah House, a secluded residence on the medical center’s campus that welcomes 85 to 100 patients a year who need end-of-life care.

“When my brother, Tom Carter, died of pancreatic cancer in 1998, we used Hospice of the Shenandoah,” Coffman said. “That was a big part of our love affair because they were so good to my brother.”

Dr. Carter passed away before the Shenandoah House came to fruition, but he urged his children to back the project before his death.

“When my brother died, Dad wrote a letter to all of us in the family and explained the project and asked that we all give to support it,” she said. “Everybody gave whatever they could.”

By the time the Shenandoah House opened in 2008, the family had given enough money to name a room after their brother – the Tom Carter Room.

And the giving continued in significant ways. Dr. Carter's children created opportunities to advocate for hospice care, both locally and beyond.

His son, Lee Carter, found a landscape architect to help beautify the Shenandoah House property with gardens, one of Dr. Carter's dreams. The gardens were later named after Dr. Carter.

Lee Carter also founded the first hospice in Mexico in the town of San Miguel de Allende. Many local hospice employees were very helpful in the endeavor, Coffman said. He's still instrumental in its operation, serving as president.

Coffman joined Augusta Health's HAB, serving from 2008-2014. She was president of the board when the Shenandoah House opened.

"It was so much fun," Coffman said. "Each board member was assigned a room at the house to decorate and furnish. We each worked with a volunteer to find furniture and create an inviting space for patients and their families."

Over the last thirteen years, she's also raised money for hospice by hosting tennis tournaments known as SHouT. The matches, held at Augusta Health's tennis facilities, have netted approximately \$70,000 and benefit the Shenandoah House. Coffman's husband, Steve, has been a dedicated volunteer for Camp Dragonfly, Augusta Health's grief support camp for children, and the couple has volunteered over the years to install memorial bricks in the Shenandoah House memorial garden. The Coffman's received an honorary brick engraved with their names from the Hospice Community Partners in 2017.

Brothers Rob and Henley Carter have significantly supported hospice over the years as well. Rob, who lives in Charlotte, North Carolina, has generously contributed to the Coffman's tennis tournaments and started a bereavement camp for children in Charlotte. His connection to bereavement camps began with Dr. Carter and his wife, who also volunteered at Camp Dragonfly. Henley, who lives locally, has supported



Keeping with Tradition

In addition to his support of Hospice and the Shenandoah House in the past, Henley Carter made personal gifts to Hospice of the Shenandoah resulting in the naming of the living room in the Shenandoah House for his wife, Mary Bishop Carter, and also the naming of the sunroom/dining room for his parents, Dr. And Mrs. Samuel H. Carter.

"When my brother, Tom Carter, died of pancreatic cancer in 1998, we used Hospice of the Shenandoah," Coffman said. "That was a big part of our love affair because they were so good to my brother."

Hospice over the years and recently the Shenandoah House in a significant way.

Today, all of Dr. Carter's children – Henley, Beverley, Joe, Alex, Lee, Rob and Katie – make financial contributions to Shenandoah House. The family's support has helped the Shenandoah House serve as a warm, welcoming and supportive place for local families in their most difficult moments.

It's a continuation of their father's legacy of love for hospice and fulfillment of the wishes he expressed in the letter he wrote to them twenty-three years ago.

"It's an incredible service to the community," Coffman said.

powered by Gratitude

Dr. Angela Sutton

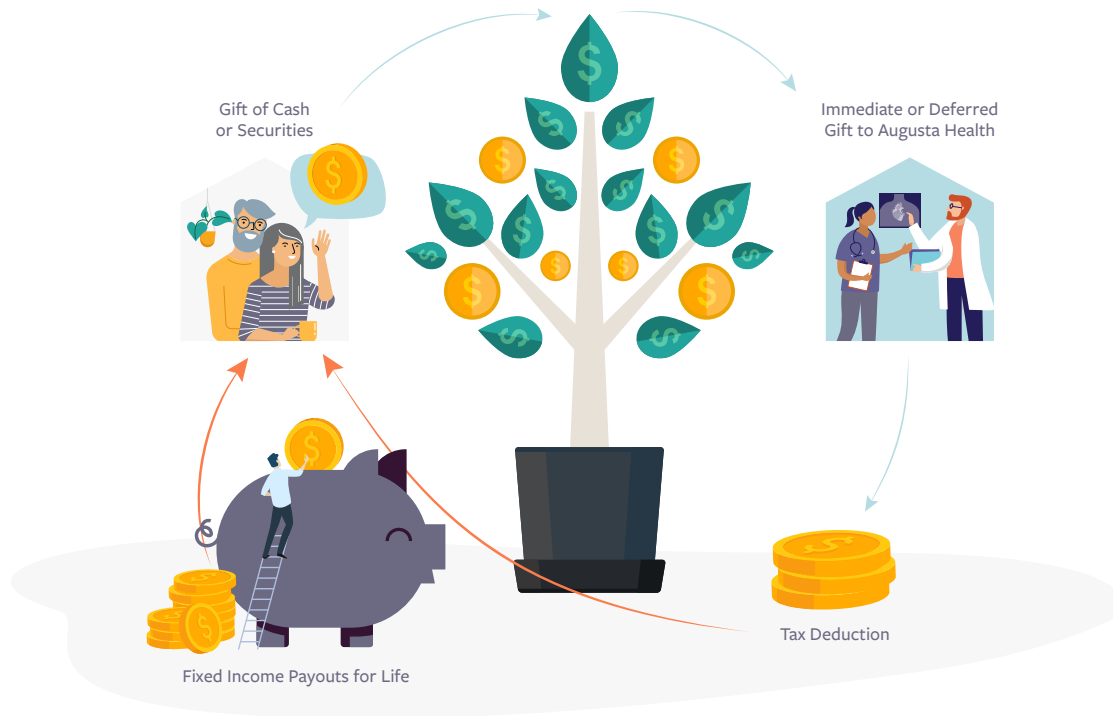
Wife, Mother, Dog Mom
Inspired by faith, fitness enthusiast,
beach bum, music lover

**Diabetes and
Endocrinologist
Specialist**

*“Gratitude closes a loop, it completes a circle.
Gratitude is a gateway to connect with others.”*

Powered by Gratitude is an initiative to identify and celebrate gratitude for Augusta Health physicians, nurses, caregivers and team members. **Tell us your gratitude story at:**
ahfoundation@augustahealth.com or 540-332-5174

 **Augusta Health
Foundation**



CHARITABLE GIFT ANNUITIES

Fixed Payments for Life

Do you want to increase your annual income and receive a tax deduction, all while ensuring the future of accessible healthcare for your family, neighbors and community? An **Augusta Health Foundation charitable gift annuity (CGA)** is a simple contract between you and Augusta Health that achieves just that. It's an easy and smart way to begin receiving income at an attractive fixed rate of return either immediately or deferred until a future time.

ABC's of CGA's

Once you make an irrevocable gift to the Augusta Health Foundation of cash or stocks, you will receive fixed payments for the remainder of your life. If you choose to name a co-beneficiary, they, too, will receive fixed payment for life. After the beneficiary's death, the remaining amount of the original gift supports Augusta Health's mission. When you establish a charitable gift annuity with the Augusta Health Foundation, you will be immediately honored as a member of the Cornerstone Legacy Society!

The Benefit to You?

As a Cornerstone Legacy Society member, you enjoy the following benefits:

- Increase your annual income,
- Enjoy an income tax deduction (if itemizing),
- Receive tax-advantaged income for life,
- Reduce your taxable estate,
- Help support the mission of Augusta Health, and,
- Be recognized and acknowledged for your generosity as a member of the Augusta Health Foundation's Cornerstone Legacy Society.

Charitable gift annuities provide unique benefits to philanthropists supporting Augusta Health. Unlike an outright gift, donating assets through a charitable gift annuity results in lifetime payments to the donor.

"I have been a volunteer for Augusta Health Hospice of the Shenandoah for the past 13+ years, and I am very passionate about the program. That is where my CGA residual will go. It is a win-win situation for me. It is additional income for me while I'm living and continued support to Augusta Health Hospice after I die."

—DAVE MATHENEY, WAYNESBORO

OUR 2020 DONORS

The Augusta Health Foundation Board of Directors extends its heartfelt thanks to the following individuals, businesses, foundations, and organizations whose generosity provided care and comfort to Augusta Health patients in calendar year 2020.

\$100,000-\$249,999

1994 SOCIETY

Estate of Roxie H. White
Virginia Hospital & Healthcare Association

\$50,000-\$99,999

CIRCLE OF HOPE

Commonwealth Transfusion Foundation
Estate of Janet S. Edwards
Sodexo
Virginia Health Care Foundation

\$25,000-\$49,999

PARTNERS IN HEALTH

Henley and Mary Carter
Richard S. Reynolds Foundation

\$10,000-\$24,999

COMMUNITY LEADERS

Emily & Bill Branscome
Coca-Cola Bottling Co. Consolidated
NTELOS Wireless Foundation
Community Foundation of Central Blue Ridge
DGO Corporation
Dominion Energy Charitable Foundation
Duke Cancer Network
Chris and Becky Earhart
Houff Charitable Foundation
J. Scott Just, MD and Casey R. Just
Mary N. Mannix & Frank A. Carey
Mid-Atlantic Food Resilience & Access Coalition
Drs. David and Heather Morgan
Segra
Xtend Healthcare, LLC

\$5,000-\$9,999

PRESIDENT'S CIRCLE – GOLD

Augusta Emergency Physicians, LTD
Auxiliary of Augusta Health
BlackRock, Inc.
Community Action Partnership of Staunton, Augusta, and Waynesboro
Carr Family Foundation
David & Lucinda Fuller Fund
The Estate of Dolly Desper
Dr. Bob and Sharon Driscoll
DuPont Community Credit Union
Mr. and Mrs. J. Gray Ferguson
Hancock Daniel
Homer L. and Joyce C. Hite
J.P. Morgan
Mr. and Mrs. John Katsianis
MedCom Solutions, Inc.
Ms. Carol H. Poulson
Carl and Cheryl Rosberg
Russell Investments

The Reider Family Fund
Warbird Consulting Partners, LLC

\$1,000-\$4,999

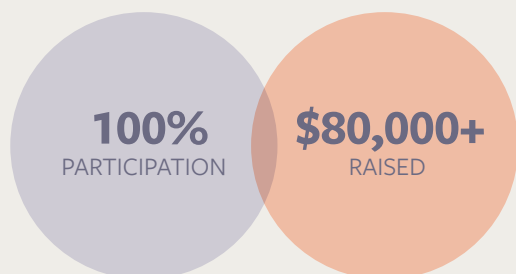
PRESIDENT'S CIRCLE – SILVER

Dr. Halvor G. & Mrs. Peggy M. Aaslestad
Dr. Miguel G. Aguinaga and Ms. Patricia E. Taylor
Herbert R. Allen, MD
American Hospital Association
Dr. and Mrs. Charles F. Andersen
Augusta Health Care Credit Union
Ms. Sylvia E. Bailey
Ball Advanced Aluminum Technologies
Mrs. Bonnie L. Barlow
Ms. Laurie Berman
Dr. and Mrs. Clark B. Bernard
Blue Ridge Oral & Maxillofacial Surgery
Bottomline Software
Mrs. Kristen L. Brandt
Mr. and Mrs. Wayne Britton
Debra Stiles Callison and James W. Callison, III
Mr. Enrique Canales & Christopher Bunn, D.O.
Mike and Debi Canfield
Mr. and Mrs. Joe Chadwell
Cirius Group, Inc.
William and Karen Clark
Mr. Jason Clarke and Dr. Sonja M. Musser
Cleverley & Associates
Dr. Julie & Mr. Steve Plumbley
Crothall Healthcare
Connection Enterprise
Converge Local
Mr. and Mrs. Scott Crabtree
Dr. Robin and Cathy Crowder
Dr. Sandra M. Curry
Mr. Joshua Dakon
Dr. and Mrs. William D. Davidson
John B.* and Patrice A. Davis
Mr. and Mrs. John A. Davis, Jr.
Mr. and Mrs. Forrest L. Dellinger
Delta Dental
Ronald W. Denney and Kathryn C. Denney
David & Cindy Didawick
ED Financial Services
Dr. and Mrs. Richard Embrey
Rich Evans and Lynn Davis
Crystal and David Farmer
First Bank & Trust Company
Ms. Dana M. Flanders
Dr. and Mrs. David Fosnocht
Foundation Radiology Group
Dr. Pamela R. Fox and Mr. Dan Layman
Frank & Cookie Johnson
Mrs. Barbara L. Franklin
Mr. and Mrs. Mark Frazier
Mr. John Girard
Glass and Metals, Inc.
Mr. and Mrs. Herbert L. Godschalk III
Mr. and Mrs. David R. Graham

Gray Ogden, LLC
Ms. Andrea W. Haley
Drs. Allan and Leticia Hardy
Nancy C. Harig
Mr. James Rodgers and Mrs. Sarah Hash-Rodgers
Healthfuse
HealthSCOPE Benefits, Inc.
Kathleen and Bill Heatwole
Daniel and Janne Heifetz
Hershey Creamery Company
Mrs. Lesley K. Hock
Dr. and Mrs. John K. Hoover II
Amy and Gary Hougan
Impact Advisors
Jackson & Coker
Mr. and Mrs. D. Scott Jones
Mr. and Mrs. Robert A. Kirby
Mr. Ronald J. Kiser
Robert and Nancy Kyler
Mark and Jennifer LaRosa
Laurick Farms - Rick and Laurie Landes
LD&B Insurance & Financial Services
Mr. Jeff Long and Ms. Karen J. Knemoller
Mr. and Mrs. John J. Lubkowski
Mr. and Mrs. John E. Mack, PA
Ms. Charlotte Maiden
Dr. and Mrs. Preston C. Manning, Jr.
Dr. and Mrs. Robert S. Markley
Mr. David E. Matheney, Jr.
John and Cathy Matherly
Ms. Mollie W. McCurdy
McDonough Toyota & Scion
Ms. Linda M. McEnery
Medical Data Systems
Mr. and Mrs. David M. Meek
Mr. William J. Mooneyham
Cheri and Phil Moran
Whit (Albert W.) and Jane Morriss
Dr. and Mrs. James Nathe
Mr. and Mrs. Daniel R. O'Connor
Mrs. Susan M. Pauly
Dr. James Perkins
Phil Perry, MD
Mr. Edward L. Pickett
Dillon Porter
Burnie and Carol Powers
Tami and Mark Radecke
Dr. and Mrs. Joseph L. Ranzini
Dr. Paula O. Rau
RCM&D
Receivables Management Consultants Inc.
Riddleberger Brothers, Inc.
Ms. Margaret A. Roark
Mr. and Mrs. William S. Rodgers
Ms. Delise F. Sartini
Shenandoah Valley Electric Cooperative
Shentel Business
Mr. and Mrs. Robert Shiflet
Ms. Jacqueline M. Sims
Mr. Robert G. Small

PAYING IT FORWARD

AUGUSTA HEALTH TEAM MEMBER
GIVING CAMPAIGN 2020



Due to COVID-19 all Foundation events and campaigns were re-imagined for 2020.

The Team Member Giving Campaign was no different. A mostly virtual “Paying it Forward” campaign began in mid-September 2020, and continued through the first week of October. The response was very positive with 100% of all members of the Executive Leadership Team giving at a higher level to support patient care programs or the Employee Emergency Fund.

Not to be outdone, Department Directors were asked to contribute a larger gift and for the first time, achieved 100% participation. The campaign exceeded its goal of \$80,000. Also, it offered new opportunities for team members to give through the end of the year, utilizing the online open enrollment and encouraging donated paid time off (PTO) hours.

We are grateful for Augusta Health’s team members sending a clear message of support for the well-being of our community.

Ms. Mandi M. Smith
Mr. and Mrs. Mitchell C. Sockett
Mr. William F. Sowers, Jr.
State Collection Service, Inc.
Dr. Kenneth Sternberg and Ms. Angelica Peña
Dr. Daniel and Caroline Sullivan
Sun Print Management
Mr. Sidney M. Sussan
Mrs. Audrey C. Vailes
Valley Vital Care

\$500-\$999

AccuTEC Blades, Inc.
Ms. Katie G. Adams
Mr. and Mrs. Daniel R. Baker
Ms. Sharon W. Bartley
Ms. Amanda Bennington
Mr. and Mrs. John W. Boswell, Jr.
Mr. and Mrs. John P. Bowers
Ms. Judy B. Burtner
Cadence Inc.
Ms. Brooke C. Campbell
Mr. and Mrs. Malcolm E. Campbell
Sarah B. Campbell, OHN
Mrs. Lois Carletti
Ms. Sherri Carter
Lawrence Comerford, MD
Cochran Family Foundation
Jeff and Penny Cooper
Nina and Stuart Crow
Ms. Crystal B. Culp
Ms. Lori K. Davis
Ms. Patricia Devitt
Mr. and Mrs. Dennis D. Diehl
Dr. and Mrs. Richard Bolstein Charitable Fund
Mr. John Falcon
Reverend Alfred Fogleman
Mr. and Mrs. Geoffrey Fosdick, Esq.
Ms. Kimberley W. Galloway
Ms. Teresa S. Garber
Goodville Mutual Casualty Company
Mr. and Mrs. Kurt Gottschalk

Dr. T. Glen and Lisa Gray
Mr. and Mrs. Kenneth E. Hale
Dr. and Mrs. Stevan T. Hanna
Dr. William L. Harrell and Dr. Tom Arbaugh
Ms. Helen L. Hogshead
Mr. Lee R. Huffer, Jr.
Ms. Gena Johnson
Mr. Jesse A. Johnson
Mrs. Julia Kearns
Ladies Auxiliary to Elliot's Knob Aerie No. 680
Ms. Theresa J. Layne
Lebanon Church of the Brethren
Mr. and Mrs. Daniel Leech
Main Street United Methodist Church
Mr. and Mrs. John C. McCue III
Ms. Jennifer McDonald
Mrs. Alice P. McLeod
Ms. Tonya M. Meadows
Dr. and Mrs. Clinton Merritt
Janet O.* and Alfred P. Meyer
Ruth and Joe* Molony
Mr. and Mrs. Justin Moyers
Mr. and Mrs. Angel Negron, Jr.
Network for Good
NIBCO of Virginia, Inc.
Oracle Corporation
The Reverend and Mrs. John C. Peterson III
Mrs. Betty T. Pullin
Ms. Dawn E. Randolph Obie
Doug and Arona Richard
Richard L.M. and Janeth B. Coleman Charitable Fund
Tamara and James Ridenour
Rockingham Cooperative Corporate Office
Mr. and Mrs. John J. Ross
Jeff and Lisa Schwenk
Mr. and Mrs. Robert D. Scott
Ms. Phyllis Scrogg
Shenandoah University
Dr. and Ms. Gerald Showalter
Mr. John M. Smallwood
Dr. John “Jay” Snyder and Dr. Amanda Guedes de Morais
Ms. Martha Sorensen
Ms. Kimberly Staton

Dr. and Mrs. Richard A. Stewart
Stuart Hall School
Dr. Angela Sutton and Mr. Matthew Sutton
Ms. Gail L. Taliaferro
Ms. Denise M. Temple
Ms. Jan Tishok
Dr. and Mrs. Stephen Turner
Mr. and Mrs. Paul P. Vames
Mrs. Jean W. Veilleux
Susannah S. Via
Mr. and Mrs. Gary Wade
Mr. and Mrs. Wayne E. Waggy
Waynesboro/Augusta Woman's Club
Weaver Insurance & Financial Advisors
Andrew West, MD
Ms. Elaine D. Wilcox
Mrs. Judith W. Zdinak

\$100-\$499

Mr. and Mrs. Jerry Acuff
Mr. James Aitken
Mrs. Anne Marie Ajemian
Dr. Cynthia and Mr. Gregory Allen
Mr. Stuart R. Allen
Ms. Kim D. Almarode
Mr. T. R. Almarode
Alter Trading Corporation
Mr. Thomas W. Altizer
Mr. Clyde Anderson
Ms. Judith C. Anderson
Ms. Kathryn F. Anderson
Mr. R. David Anderson
Ms. Mary T. Arrowood
Mr. Matthew At Lee
Augusta Health Care, Inc.
Dr. Gilmer Ayers and Ms. Diane Heaver
Sandra Gum Baker
Ms. Sara Baker
Mr. and Mrs. Leo A. Bares
Ms. Chloia R. Barker
Ms. Kiera A. Barker
Mr. and Mrs. Jon B. Barlow

OUR 2020 DONORS

Drs. Patrick and Allison Baroco
 Mrs. Elaine H. Barr
 Dr. and Mrs. Michael A. Barrett
 Ms. Tina S. Bartley
 Mrs. Glenna G. Beard
 Ms. Michon Bechamps
 Mr. and Mrs. Gregory S. Bednarz
 Adam and Philippa Belsches
 Ms. Tamara E. Bennington
 Ms. Beatrice F. Benson
 Mr. Lyle S. Benson
 Ms. Patricia A. Benson
 Ms. Susan L. Bess
 Ms. Hilda Bewall
 Ms. Doris Jean Taylor Bishop
 Ms. Stephanie R. Bishopriggs
 Mr. and Mrs. Montzeree C. Blakey
 Blue Ridge Appraisal Co. LLC
 Blue Ridge Pathologists PC
 Mr. and Mrs. Raymond C. Bodley
 Mr. and Mrs. Oscar Boetticher
 Mr. and Mrs. Michael Boggs
 Harry and Sarah Boney
 Mr. Kenton C. Bosserman
 Ms. Ramona J. Bosserman
 Mrs. Sandra Botkin
 Dr. and Mrs. Francis J. Bourgeois
 Ms. Kennon Bowen
 Ms. Kathy J. Bradley
 Mr. and Mrs. Michael C. Breeding
 Ms. Amber K. Brooks
 Ms. Kelley M. Brooks
 Drs. Michelle and William Brooks
 Mr. Robert S. Brooks
 Ms. Barbara A. Brothers
 Ms. Beth A. Brower
 Ms. Ashleigh E. Brown
 Ms. Deborah L. Brown
 Ms. Rachel C. Brown
 Ms. Rachel K. Brown
 Ms. Sheila A. Brown
 Dr. and Mrs. Brian Brumbaugh
 Ms. Peggy M. Brust
 Ms. Faith Bryant
 Ms. Veronica D. Bryant
 Mr. Robert W. Burke, PA C
 Ms. Cynthia Q. Burnett
 Mr. Tony Burns

Vickie and Charles Burton
 Ms. Emily Campbell
 Ms. Logan Campbell
 Ms. Margie L. Campbell
 Mrs. Mary A. Campbell
 Ms. Thelma Campbell
 Ms. Shannon K. Capriotti
 Mr. and Mrs. George J. Carney
 Ms. Morgan Carpenter
 Ms. Susanna W. Carter
 Mr. and Mrs. William H. Carter
 Mrs. Meredith L. Carver
 Ms. Rhiannon F. Cash
 Mr. Andrew J. Cashatt
 Mr. Steven T. Cashatt
 Ms. Gretchen T. Cassell
 Mr. and Mrs. Ted Cathey
 Mr. and Mrs. James I. Chambers
 Mr. and Mrs. Marsden E. Champaign
 Ms. C. Frances Chandler
 Mr. Marvin L. Chaplin
 David and Paula Chernoff
 Mr. C. Rick Chittum
 Mr. Wayne E. Chittum
 Mr. Charles F. Clark
 Mr. James L. Clark
 Ms. Meghan M. Clark
 Ms. Suzanne Clark
 Ms. Lelia J. Clem
 Kevin Clifford, DDS
 Mr. and Mrs. Lawrence Cline
 Ms. Jennifer S. Clinedinst
 Mrs. Bobbi J. Coffey
 Mr. and Mrs. Stephen L. Coffman
 Reverend and Mrs. Curtis P. Coffman
 Coffman's Landscape and Lawn
 Mr. William Cohee
 Mrs. Mary Ruth Coleman
 Dr. and Mrs. James S. Comar
 Mr. John B. Conner
 Mr. and Mrs. Harold Cook
 Ms. Brandy Coon
 Mr. Timothy S. Craddock
 Mr. Byron C. Crump
 Mrs. Michelle R. Cupp
 Ms. Melissa Curry
 Ms. Elizabeth Dattilio
 Ms. Deborah L. Davis

Ms. Donise S. Davis
 Jared A. Davis, MD
 Ms. Michele Davis
 Ms. Tracy Davis
 Mr. Michael Day
 Dr. and Mrs. Daniel B. Dean
 Ms. Lorrie M. and Duane A. Dean
 Dr. and Mrs. Douglas B. Degen
 Christopher and Bethany Delk
 Ronald W. Denney and Kathryn C. Denney
 Dr. Cynthia Dent and Mr. John Dent
 Dr. Peter and Mrs. Ginny DeVries
 Ms. Teresa E. Dinges
 Ms. Kathy Dixon
 Mr. and Mrs. John Dodd II
 Mr. William R. Dod II
 Dr. Olimpia V. Dorries
 Ms. Kristen S. Doughty
 Ms. Gloria L. Dove
 Ms. Mary W. Dove
 Mr. R. David Dove
 Mr. and Mrs. O. George Drummond
 Mr. Daniel Duncan
 Mr. James E. Duncan
 Mr. W. Michael Dundas
 Mrs. and Mr. Lora A. Dury
 Mr. Ernest H. Dwight
 Ms. Cathi Earhart
 Ms. Marsha A. Eavey
 Mr. and Mrs. Charles A. Eckard
 Ms. Tammy L. Eckert
 Ms. Megan Eggleston
 Ms. Catherine M. Elder
 Electric Connection, Inc.
 Mr. and Mrs. Michael D. Elliott
 Elliott's Knob F.O.E. Aerie 680
 Ms. Dolly F. Ellis
 Elmore Hupp & Company, P.L.C.
 Ms. Nancy G. Engle
 Ms. Cynthia Erickson
 Ms. Paula J. Erickson
 Mr. and Mrs. Robert B. Euler
 Ms. Jill C. Fairbanks
 Karen and Charles Fairchilds
 Mr. and Mrs. Louis A. Farmer
 Ms. Carol D. Farrar
 Mr. and Mrs. Cheryl and Rick Fauerbach
 Mr. and Mrs. A. Thomas Fechtel

CORNERSTONE LEGACY SOCIETY

The Legacy Society recognizes individuals and couples who have provided for the care of future patients through an estate or planned gift.

Everett R. Andes*
 Helen J. Angier*
 Lelia Jane Bateman*
 Lewis Bell*
 Laure E. Bermna*
 Dawn C. Bulle*
 Frances Blackwell Campbell*
 Alphiield Canning*
 Elizabeth Binford Chew Carr*
 S. Henley Carter
 E. Stuart Crow
 Connie J. Doebele
 John V. Downey*
 Sharon S. Driscoll

Dave Eckard*
 Janet S. Edwards*
 Patricia Hawley Fleenor*
 Gary M. Fletcher*
 A.H. and Clara Higginbotham*
 Robert E. Holsinger*
 Jean Holbert Kent*
 Ruth G. Kibler*
 Robert & Nancy Kyler
 Dorothy H. Lamb*
 David E. Matheney
 Alfred P. Meyer
 Cheri S. Moran
 Jean Mundy*

Claudine Obaugh*
 Glenna Obaugh*
 Julie A. Plumbley
 Austin Seal*
 Audrey Gowing Smith*
 Lawrence E. Smoot
 Lorraine Sprouse*
 Myrtie Stupkin*
 Kathryn Hanger Taylor*
 Boyd W. and Rose S. Thompson*
 Rose S. Thompson*
 Mary Louise Stombock Walker*
 Roxie H. White*
 Doris R. Willis*

* Deceased

Dr. Barbara Fenton and Dr. Charles Thornsvar
 Ms. Gail B. Ferguson
 Ms. Jessica Ferguson
 Ms. Inez A. Ferraris
 Mr. and Mrs. Richard O. Fitt
 Ms. Mary C. Flynn
 Ms. Cierra Folks
 Mr. and Mrs. Mark C. Fontenot
 Ms. Susanna Forren
 Mr. Ken Fortune
 Dr. and Mrs. Donald R. Fowler
 Mr. and Mrs. Charles E. Frankfort
 Mr. and Mrs. Donald O. Fravel
 Mr. and Mrs. William T. Frazier
 Ms. Linda R. Freed
 Mr. Daniel M. Friend
 Mr. C. Wayne Frizzelle
 Sabrina P. Fuller, RN
 Ms. Roberta L. Garrett
 Mr. Clifford Garstang
 GE Foundation
 Ms. Heidi B. Gentry
 James E. Gillespie, MD
 Dr. and Mrs. C. Buckley Gillock
 Mr. and Mrs. Gordon R. Glatfelter
 Mr. and Mrs. Richard R. Glenn
 Dr. Drew E. Gogian
 Ms. June Graham
 Mr. and Mrs. Daniel Grantham
 Ms. Lori B. Gravely
 Ms. Debra A. Gray
 Ms. Mary Alice Green
 Emily Greene, PA
 Ms. Meagan L. Greenwood
 Ms. Karen S. Griffin
 Ms. Kira S. Griffin
 Ms. Teri Griffith
 Mr. Warren Groeger
 Mr. John D. Grove
 Mr. and Mrs. Andrew T. Guertler
 Mr. and Mrs. George R. Haines, Jr.
 Mr. and Mrs. Kenneth L. Hall
 Allan S. Hamby, MD
 Ms. Grindl S. Haney
 Ms. Michelle L. Hanger Gee
 Ms. Carol W. Hardin
 Ms. Susan Harman
 Mr. James P. Harmon
 Ms. Jane S. Harris
 Mr. and Mrs. John M. Harris
 Paul L. Hatcher
 Mr. and Mrs. Richard Haupt
 Mr. Brett Hayes
 Mr. and Mrs. W. J. Haynie III
 Mr. and Mrs. Kevin R. Hazlett
 Ms. Christina E. Hedrick
 Mrs. Lola B. Hensley
 Ms. Dallas M. Herrington
 Ms. Margaret Hersh
 Ms. Brenda L. Hicks
 Ms. Cynthia Higgs
 Ms. Catherine Hill
 Peggy C. Hill, RN
 Mr. William S. Hill
 Mr. and Mrs. Jack Hillegas
 Ms. Betty C. Hite
 Mr. and Mrs. Brent Hoffman
 Ms. Karen L. Holland
 Ms. Caravella M. Holly
 Ms. Lindsey Hopewell
 Samuel Hostetter, MD
 Stephen and Sara Howlett

Mr. Stephen Huffman, Sr.
 Ms. Bobbi J. Hughes
 Ms. Lynette H. Hughes
 Ms. Gail Hundley
 Mr. Winston R. Hunley
 Mr. Ronald W. Huntley
 Mrs. Mary L. Huppuch
 Ms. Donna L. Hurst
 Buddy Hutchens
 Infinity Fuel Cell and Hydrogen, Inc.
 International Sleep Products Assn.
 Mr. Isaac Izzillo
 Reverend Lucy A. Jackson Hughes
 Ms. Crystal Jarrels
 Ms. Amy Jarvis
 Jason & Eric Coker Memorial Fund
 Mr. Doug K. Jena
 Jonathan and Kathy Jencks
 Mr. and Mrs. E. Thomas Jennings, Jr.
 Mr. Andrew J. Johnson
 Mr. and Mrs. Ronald T. Johnson
 Ms. Sharon Johnson
 Ms. Sue H. Jones
 Mr. and Mrs. Thomas Jones
 Mr. and Mrs. Robert M. Kane
 Dr. Kenneth W. Keller
 Dr. Walter Kersch
 Mr. and Mrs. Gregg Kesterson
 Ms. Amy Laser Kiger
 Ms. Kathleen M. Kile
 Mrs. Bonnie W. Kimmett
 Mr. Anthony C. Kincaid
 Ms. Elizabeth W. Kirtz
 Ms. Helen S. Kitchens
 Ms. Janice Kitts cook
 Ms. Barbara Knick
 Ms. Judy A. Knick
 Mr. and Mrs. Jerrel T. Knight
 Ms. Nancy E. Koplin
 Mr. and Mrs. Harry R. LaBrie
 Mrs. Joanne D. Lam
 Ms. Vickie M. Lam
 Mr. Ray J. Lambert, Jr.
 The Honorable and Mrs. R. Steven Landes
 Ms. Stacy E. Lawhorne
 Mrs. F. Louise Lawler
 Mr. Michael E. Layman
 Mr. and Mrs. David Layne
 Lebanon Presbyterian Church
 Dr. and Mrs. T. Lowell Lemons
 Mr. Kevin Lew
 Ms. Kendra Lewis
 Ms. Kristie L. Lewis
 Mr. and Mrs. Jacques L'Heureux
 Ms. Lorie E. Lichtenwalner
 Mr. and Mrs. Martin F. Lightsey
 Todd and Dina Lilley
 Mr. Ed Lindsey
 Mr. and Mrs. Richard W. Liskey
 Chris and Betsy Little
 Ms. Dawn L. Locklair
 Mr. Stephen A. Lockridge
 Mr. Andy L. Long
 Mary N. Long, NP
 Ms. Rebecca T. Losh
 Mrs. Geraldine S. Lowe
 Ms. Melody C. Lowery
 Ms. Christina L. Lucas
 Mrs. Carter A. Lundquist
 Mr. Philip C. Lynch
 Ms. Sarah Lynch
 Mrs. Ellen C. Maddox

Magellan Complete Care of VA
 Ms. Kara R. Malcolm
 Mr. and Mrs. Dave Mangun
 Dr. and Mrs. Richard S. Mansfield
 Mr. and Mrs. C. D. Marechal
 Ms. Amy Markham
 Ms. Kathleen W. Marshall
 Ms. Brenda S. Martin
 Ms. Donna L. Martin
 Ms. Tamera S. Mason
 Ms. Michelle Mason Pedigo
 Ms. Faye L. Mathyas
 Beth and Nathan Maust
 Drs. Nelly and David Maybee
 Mr. Thomas McCabe
 Mr. Kemper A. McCauley
 Mr. James E. McClure
 Mr. and Mrs. Joe McDonald
 Mr. and Mrs. Frank J. McDonough, Jr.
 Mrs. Martha J. McDonough
 Mr. and Mrs. Brian M. McGill
 Mrs. Kara J. McGill Meeks
 Ms. Megan C. McIlwee
 Mr. and Mrs. William T. McIntyre, Jr.
 Mr. Michael L. McMillion
 Ms. Anne M. Menter
 Dr. and Mrs. Clinton Merritt
 Mr. and Mrs. David R. Metz
 Mr. Harry E. Meyer
 Michael and Patricia Abbott Giving Fund
 Mr. Bradley K. Michael
 Mid Valley Press
 Mid Atlantic Region, VMCCA
 Middle River Church of the Brethren
 Ms. Mary Scott Miller
 Ms. Stephanie Mims
 Dr. David R. Mirra
 Ms. Rosemary Mitchell
 Moffett Paving & Excavating Corp.
 Ms. Alicia D. Mohler
 Ms. Rebecca C. Mohler
 Prof. Denise Montgomery
 Ms. Margaret Mooney
 Ms. Anne J. Moore
 Mr. and Mrs. P. William Moore, Jr.
 Mr. and Mrs. Mitchell Moore
 Mr. and Mrs. Will Moran
 Ms. Linda Moran
 Carol J. Morris
 Ms. Carolyn A. Morris
 Mr. and Mrs. Bruce T. Mowry
 Mr. Andrew Moyer
 Ms. Judy A. Moyers
 Ms. Sarah S. Mueller
 Ms. Amy Mullins
 Mr. and Mrs. Allen J. Murphy
 Ms. Denise Mutscheller
 Mr. Jeffrey D. Muzi
 Mr. Charles F. Myers
 Ms. Susan M. Myers
 Mrs. Dorothy D. Nelson
 Ms. Mary Norman
 Fredrick and Gail Nowak
 Ms. Michelle Michelle Nuckols
 Mr. Dennis P. O'Connor
 Ms. Mary R. Ogden
 Mr. K. A. Ohlemeyer
 Mrs. Claudia O'Neill
 Mr. and Mrs. Thomas H. Oneill
 Mrs. Sarah S. Paiste
 Ms. Carolyn H. Palmer
 Dr. and Mrs. Robert Partridge

OUR 2020 DONORS

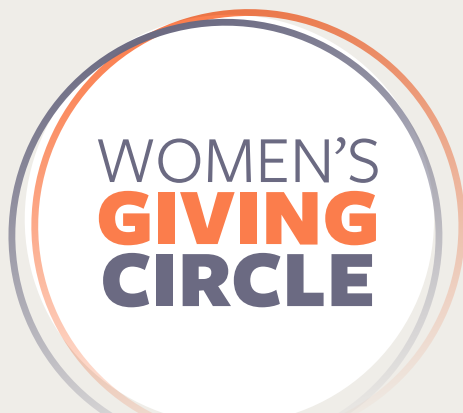
Col. Melissa E. Patrick, Ret.
 Ms. Amy L. Patterson
 Mr. Ronnie L. Patterson
 Ms. Shelley R. Payne
 Ms. Lisa Peacemaker
 Mrs. Margaret T. Penick
 Dr. and Mrs. Thomas R. Pereles
 Ms. Tina M. Perry
 Mr. and Mrs. William L. Pfost
 Ms. Lee Anne P. Phillips
 Ms. Mary P. Pierce
 Mr. Nevin D. Pilson
 Mr. Royce H. Poletti
 Dr. and Mrs. Charles Polly
 Mr. and Mrs. Donald E. Pomeroy
 Mr. L. R. Post
 Mr. George R. Pryde
 Ms. Brandy Puckett
 Mr. and Mrs. Larry Puffenbarger
 Ms. Kelli R. Puffenbarger
 Ms. Renee G. Pullen
 Ms. Sara Quick
 Mrs. Helen A. Radakovich
 Ms. Linda L. Radka
 Ms. Mary C. Rainey
 Rattlesnake Ridge Hunt Club
 Mrs. Deborah Ray
 Ms. Suzanna Rea
 Ms. Mary Elizabeth Read
 Redbeard Brewing Company
 Ms. Pauline H. Reese
 Ms. Melissa A. Reeves
 Marla and Gary(Rick) Reichenbecher
 Ms. Emily S. Reno
 Ms. Devonia L. Rexrode
 Matthew F. Rhodes, PA
 Ms. Susan Richardson
 Mr. Todd Richardson
 Ms. Ann C. Ridder
 Mr. Bret K. Ritchie
 Mr. and Mrs. Julian W. Rittenhouse
 Mr. and Mrs. Gary P. Roberson
 Mr. and Mrs. Tom E. Roberts
 Miss Crystal D. Robertson
 Mr. and Mrs. Thomas L. Robertson
 Ms. Janice Rockwell
 Mr. Matthew Roller
 Mr. Ivo Romenesko
 Ms. Aimee Rose
 Mrs. Bonnie J. Rose
 Ms. Deborah Rose
 Mr. Daniel Rosebough
 Ms. Emily L. Rowzie
 Ms. Robin L. Royal
 S & W Home Appliance Corporation
 Col. and Mrs. Woodson A. Sadler
 Victor and Karen Santos
 Ms. Regina Sapona
 Dr. Kristen L. Savola and Dr. George Verghese
 Mr. William M. Saxman
 Ms. Susan A. Scharf
 Ms. Teresa M. Schneider
 Mrs. Ellen G. Schorsch
 Mr. Norman H. Scott
 Mr. and Mrs. Bobby L. Seaman
 Mr. Kenneth Seymour
 Mrs. Joan C. Shackelford
 Ms. Jacqueline Sheets
 Mr. and Mrs. Randy Sheffield
 Sheffield Promotions LLC
 Mrs. Sharon E. Shenk
 Ms. Sandra Shields

Ms. Patricia L. Shifflett
 Mr. and Mrs. Ron Shifflett
 Mr. and Mrs. H. Roller Shipplett, Jr.
 Mrs. Lisa Showalter
 Mr. and Mrs. Todd Showalter
 Ms. Libby Sieber
 Mr. and Mrs. Philip L. Sieck
 Dr. and Mrs. Lewis A. Siegel
 Ms. Lori A. Silvestri
 Ms. Jessica Simpson
 Ms. Lisa M. Smith
 Ms. Marcia L. Smith
 Mr. and Mrs. Lawrence E. Smoot
 Ms. Betty A. Snyder
 Mr. Michael Snyder
 Ms. Patricia M. Snyder
 Ms. Peggy A. Snyder
 Mr. and Mrs. Andrew T. Southard
 Mr. John P. Sozanski, Sr.
 Ms. Sharon L. Spalding and Mr. Phillip Spalding
 Spring Hill Presbyterian Church ECO
 Ms. Sandra O. Sprouse
 Ms. Susan M. Sprouse
 Ms. Sandra L. Spry
 Ms. Margaret H. Stables
 Joan Stalzer, MD
 Ms. Sharon Stanley Rea
 Mrs. Suzanne P. Staples
 Mr. and Mrs. Eric M. Stark
 Mrs. Suzanne W. Stathos
 Staunton Lodge B.P.O. Elks #351
 Kevin W. Steckline, PA
 Mr. and Mrs. Tim Stewart
 Dr. Ronald L. Stewart
 Ms. Kimberly Sullenger
 Mr. Frank M. Summers
 Ms. Lynn L. Lump
 Mr. and Mrs. David W. Surratt
 Mrs. Susan Swan
 Ms. Janet S. Swartz
 Ms. Rebecca Swartz
 Ms. Caitlin B. Swecker
 Mr. and Mrs. Alfred A. Swicegood
 Mr. and Mrs. Steven C. Tabscott
 Ms. Janet L. Tate
 Mr. Douglas S. Thompson
 Mr. and Mrs. Thomas E. Thompson
 Dr. and Mrs. William G. Thompson
 Ms. Angela L. Thorne
 Ms. Patricia A. Tichenor
 Ms. Jeanne W. Tillery
 Tinkling Spring Presbyterian Church
 Mr. Jan Tobias
 Ms. Joyce A. Tobias
 Ms. Jean H. Toman
 Ms. Tammie W. Toner
 Mrs. Barbara P. Trumbo
 Joseph Truxell
 Kristin Turza, MD
 Mr. and Mrs. Andrew J. Ventura
 Mr. and Mrs. Victor Vernon III
 Mr. and Mrs. Raymond E. Via, Sr.
 Ms. Misty Walker
 Mr. and Mrs. Michael A. Walters
 Mr. and Mrs. Frederick A. Wampler
 Mr. Jacob H. Wamsley II
 Mr. Bruce D. Ward
 Ms. Martha B. Ware
 Ms. Virginia A. Warrick
 Ms. Megan Webber
 Ms. Liisa T. Westen
 Mr. and Mrs. Hugh E. Westfall

White, Withers, Masincup & Cannaday, PC
 Whitesel Brothers, Inc.
 Ms. Leisa H. Whitesell
 Ms. Nancy H. Whitmore
 Ms. Anne C. Wick
 Ms. Amanda R. Widner
 Mr. Linwood G. Wilkes
 Mr. Paul G. Williamson
 Ms. Patricia H. Wills
 Mr. and Mrs. Brennon C. Wilson
 Mr. Larry Wilson
 Mrs. Murphy T. Wilson
 Mrs. Sherry Wiltshire
 Ms. Kendra R. Wimer
 Ms. Lorie L. Wolfe
 Anne S. Wong, NP and Mr. Shawn Wong
 Mr. Vernon D. Wooddell
 Mr. Christopher P. Wray
 Ms. Dotty Wright
 Ms. Catherine W. Yeatts
 Mr. and Mrs. Fred B. Yelverton
 Dr. and Mrs. Jeffery B. Young
 Ms. Stacy Young
 Mr. and Mrs. David M. Zeiner
 Mr. and Mrs. David Zerlaut
 Ms. Mary J. Zwart

Under \$100

Mr. and Mrs. Hawes N. Adams II
 Mr. and Mrs. Terry S. Adams
 Airline Hydraulics
 Mr. William F. Aldridge
 Ms. Dee Anderson
 Mr. Dwayne G. Anderson
 Ms. Lynn R. Anderson
 Mr. and Mrs. Johnnie G. Anderson
 Ms. Betty B. Arbaugh
 Ms. Linda B. Arbaugh
 Mr. Richard Z. Atkinson
 Mr. and Mrs. Richard Z. Atkinson
 Augusta Co op Farm Bureau
 Augusta County Federal Credit Union
 Augusta County Service Authority
 Augusta Health QRM
 Mr. and Mrs. John C. Avellone
 Ms. Anne Aycok
 Ms. Jacqueline E. Badger Jackson
 Tamiko Bailey
 Mr. and Mrs. Timothy Baker
 Ms. Joan T. Balser
 Ms. Francesca G. Barna
 Ms. Judith A. Barr
 Dr. and Mrs. Michael A. Barretti
 Mr. and Mrs. Gary Bartolacci
 Mr. and Mrs. Michael Bateman
 Ms. Karen L. Bateson
 Ms. Brannelly Batman
 Mr. and Mrs. George F. Baylor
 Ms. Amy H. Beech
 Mrs. Elizabeth Benavitch
 Benevity
 Ms. Kathryn W. Berger
 Mr. James L. Beverage
 Mrs. Martha B. Black
 Ms. Susan Blackburn
 Mr. Vance Blosser
 Ms. Elisabeth L. Bohnengel
 Mrs. Jean A. Boland
 Mr. and Mrs. Delmer G. Botkin
 Ms. Angela H. Bourbeau
 Ms. Linda H. Bowles



2020 WOMEN'S GIVING CIRCLE MEMBERS

Nancy C. Armstrong
Sylvia E. Bailey
Bonnie L. Barlow
Kristen L. Brandt
Evelyn F. Britton
Debra S. Callison
Debra Canfield
Bethany Chadwell

Doris Clark
Sandra M. Curry
Kathryn C. Denney
Patricia Devitt
Cynthia K. Didawick
Sharon S. Driscoll
Dana M. Flanders
Barbara L. Franklin

Nancy C. Harig
Joyce C. Hite
Lesley K. Hock
Mary N. Mannix
Linda M. McEnery
Sarah S. Paiste
Jeanne Partridge
Tami Radecke

Arona Richard
Margaret A. Roark
Gloria A. Rodgers
Phyllis Scroggum
Mandi M. Smith
Jean Wade
Roberta N. Wood



The Augusta Health Foundation Women's Giving Circle was founded in 2017 and is grateful to have a membership of more than thirty women. Their philanthropic efforts have generously supported the Forensics Room and a storage and archival system for victims of sexual assault, and new 3-D mammography technology.

These engaged and dynamic women gather three times a year and learn about important health topics from Augusta Health experts. Topics covered in 2020 included Metabolic Disease information for women, the Augusta Health and AMI Farm project, and the new Outpatient Pavilion and Breast Health Center. The Women's Giving Circle is already working on their next Foundation project, and is always excited to share their philanthropic interests and activities with new members.

Bruce and Nancy Bowman
Mr. and Mrs. Chester L. Bradfield
Lisa D. Bradley, RN
Mr. and Mrs. Louis T. Bradley
Mr. Brandon L. Bradshaw
Ms. Anne H. Branch
Ms. Helen E. Braunworth
Ms. Alexis Brewer
Ms. Chelsea G. Brooks
Ms. Holly Brooks
Ms. QueNisia Brooks
Mrs. Carol M. Brown
Mr. David Brown
Mr. and Mrs. Mark S. Brown
Ms. Mary Bruce
Ms. Ashley Brucia
Ms. Robyn N. Brydger
Ms. Kay G. Buchanan
Ms. Kim Buchanan
Ms. Melissa Buckshorn
The Honorable and Mrs. Rudolph Bumgardner III
Mr. and Mrs. William D. Burgess
Ms. Rae Anne M. Bushway
Ms. Lorraine W. Caldwell
Ms. Donna Campbell
Mrs. Janet E. Campbell
Ms. Theresa M. Campbell
Ms. Cass Cannon
Mr. Thomas Carr
Mr. and Mrs. Robert R. Carrothers
Ms. Anna Christy Carson
Ms. Donna Carter
Ms. Olivia Carter
Mr. Roy G. Cavaco
Charlie Obaugh Chevrolet Buick GMC
Mr. Michael A. Cherubin
Ms. Thelma B. Chestnut
Mr. and Mrs. Earl W. Chittum
Mr. and Mrs. Thomas H. Chittum
Ms. Ruth E. Chodrow
Ms. Kathy Claiborne
Mr. Charles R. Clatterbaugh

Mr. Kevin S. Cleveland
Mr. Phillip R. Cobb
Mr. and Mrs. H.C. Stuart Cochran
Janice Coffey
Mr. and Mrs. Robert L. Cohen
Mr. Wendell L. Coleman
Jessicah S. Collins, MD
Mrs. Susan F. Combs
Ms. Bettie H. Compton
Mr. Shane Conner
Mr. Ashley R. Cook
Mr. Louis W. Cook
Ms. Faye Cooper
Mrs. Sue E. Correll
Mr. and Mrs. G. Richard Cox
Ms. Shannon A. Cox
Ms. Colleen Coyner
Ms. Laura Craig Sims
Mr. and Mrs. Stanley E. Craun
Ms. Katharine Cronk
Ms. Betty K. Cross
Mr. and Mrs. John D. Croushorn
Mrs. Julie H. Crowder
Tracy Cullen
Ms. Elizabeth Curry Simms
Ms. Heather Dalton
Mr. Kevin L. Davies
Ms. Peggy F. Davis
Ms. Catherine E. Deane
Ms. Linda S. Dedo
Ms. Christine Dee
John J. DeForge
Mr. and Mrs. Emerson L. Deitz
Ms. Mary Kate DePriest
Mr. Edwin DesCombes
Ms. Anne E. Dolack
Mr. and Mrs. David S. Douthett
Ms. Sherry M. Doyle
Mr. and Mrs. David W. Driver
Mr. and Mrs. Charles T. Drumheller
Ms. Patricia Duckworth
Mr. and Mrs. Lynwood L. Dull

Ms. Kathryn Dunay
Mr. H. Windley Dunbar
Ms. Muriel Early
Ms. Linda M. Eaton
Mr. and Mrs. Herman Eavey
Mr. and Mrs. Jeffrey H. Eckard
Mr. John C. Edgecomb
Emmanuel Women's Fellowship
Mr. and Mrs. David Engel
Mr. and Mrs. Irvin L. Erler
Ms. Reuak G. Evans
Ms. Tammy M. Evans
Mr. and Mrs. Lenard R. Fainter
Ms. Alison Fairbanks
Mr. and Mrs. J. Vern Fairchilds, Jr.
Mr. and Mrs. Kenneth K. Farley
Mr. Matthew S. Fidler
Ms. Patricia Fillion
Fisher Auto Parts, Inc.
Ms. Grace C. Fisher
Ms. Charlotte F. Fitzgerald
Ms. Helen K. Fitzgerald
Mr. and Mrs. William C. Flournoy
Ms. Delores B. Floyd
Forest Chapel Church
Ms. Mary Annis D. Forsyth
Mrs. Donna Fortin
Ms. Carolyn H. Franger
Mrs. Ruth M. Frauendorf
Ms. Angela A. Frazier
Joseph Freeze, NP
Mr. and Mrs. Charles Fridley
Mrs. Ava Pullin Funk
Ms. Dawn Funkhouser
Mr. Brian Garber
Mr. Robert J. Garber
Ms. Sarah N. Garrison
Mr. Thomas M. Gathright III
Ms. Allison Gayheart
Ms. Darlene Gearhart
Mrs. Sue E. George
Ms. Bonnie C. Gerhart

OUR 2020 DONORS

Mr. and Mrs. Douglas W. Gerni
 Ms. Carrie P. Gibbons
 Ms. Amelia F. Gilbert
 Mr. Clifford A. Gilchrest
 Dr. and Mrs. C. Buckley Gillock
 Glossbrenner United Methodist Sunday School
 Ms. Melissa A. Golladay
 Mr. Doug W. Gordon
 Mr. and Mrs. Daniel Grantham
 Mr. Reed E. Graves, Jr.
 Mr. and Mrs. H. Gregg Gray
 Mr. Adam C. Green
 Ms. Lori Grogg
 Ms. Caroline H. Hackley
 Mr. and Mrs. Preston H. Hadley III
 Mr. Robyn L. Haltigan
 Mr. and Mrs. Michael G. Hamp
 Mr. and Mrs. Clarence F. Hamrick
 Ms. Joy Hancock
 Ms. Sonja K. Hanger
 Mr. and Mrs. Bruce Hankee
 Dr. and Mrs. William B. Hanna
 Mr. William F. Harding
 Ms. Ashleigh Harman
 Mrs. Rebecca Harmon
 Ms. Sandra S. Harper
 Ms. Jacqueline A. Harrilchak
 Laura L. Harris, RN
 Mr. Ron W. Harris
 Ms. Roxanne C. Harris
 Ms. Casey M. Hartless
 Ms. Ashley D. Hartshorn
 Mrs. Susan F. Hastings
 Hathaway Paper, Packaging, Janitorial
 Ms. Dana M. Hays
 Ms. Tina M. Heatwole
 Mr. Anthony Helmick
 Ms. Sherri Gail Henderson
 Ms. Angela Henderson Boylen
 Mr. and Mrs. Burk Hershey
 Ms. Angela Hibshman
 Mr. and Mrs. Benton Higgs
 Dr. and Mrs. Paul E. Hill, Jr.
 Ms. Nancy W. Hinchee
 Mr. and Mrs. Patrick Hinely
 Teresa L. Hinkley, RN
 Mr. and Mrs. James W. Hinton
 Mr. and Mrs. Max Hirtriter, Jr.
 Ms. Linda Hirw
 Ms. Julie S. Hite
 Ms. Lisa Hizer
 Mr. and Mrs. Wade W. Hobbs
 Mr. and Mrs. Randal W. Hodge
 Ms. Susan L. Holland
 Mr. W. Bogart Holland
 Mr. and Mrs. Otis W. Holley
 Ms. Alice M. Holmes
 Ms. Phyllis Holroyd
 Home Instead Senior Care
 Ms. Jennifer L. Hoover
 Ms. Beth Hordines
 William B. Horton, MD
 Ms. Brandy Horvat
 Mr. Brandon L. Hostetter
 Mrs. Nancy Ann Houser
 Mrs. Joyce P. Huddle
 Ms. Debbie Huffer
 Ms. Wilma J. Huffer
 Ms. Susan Huffman
 Mr. Dale Hungerford
 Eleanor G. Hutchens, MD
 Mr. and Mrs. William H. Hutchens

Mr. Van S. Hyden
 Ms. Amy H. Izzillo
 Mr. and Mrs. Jerry L. Jarvis
 Mr. and Mrs. C. S. Johnson
 Mr. Hansford J. Johnson
 Ms. Megan H. Johnson
 Mr. Travis Johnson
 Ms. Jennifer L. Jolin
 Mr. Willie M. Jones
 Mr. and Mrs. Bob Jordan
 Camille E. Kaplan, NP
 Mr. and Mrs. Daniel L. Kelley
 Marcia and John Keppel
 Ms. Kathleen Kile
 Ms. Annette M. Kingston
 Mr. and Mrs. Jerry P. Kite
 Ms. Sussan Knick
 Ms. Leslie L. Knight
 Ms. Tyffanie Knight
 Ms. Karen Kossin
 Ms. Violet M. Kramer
 Ms. Geraldine D. Kruger
 Mr. and Mrs. Robert P. Kuykendall
 Ms. Ruth A. Labate
 Ms. Ashley Lamay
 Ms. Diana R. Lambert
 Ms. Judy S. Langley
 Ms. Meredith C. Lantz
 Ms. Caroline Law
 Dr. Kevin L. Lawrence
 Ms. Donna A. Lawyer
 Mr. and Mrs. W. E. Leary
 Ms. Krista Leichner
 Mrs. Lisa M. Lenker
 Mr. and Mrs. R. Trenton Leonard
 Mrs. Margo Leopard
 Ms. Betty Lester
 Ms. Donna M. Lewis
 Ms. Margaret L. Lewis
 Mr. and Mrs. David A. Ley
 Ms. Barbara Lloyd
 Mr. George W. Lockridge
 Mr. Michael H. Lotts
 Ms. Rebecca S. Lovegrove
 Ms. Cherie D. Lowry
 Ms. Glenda Dian Lucas
 Ms. Leah M. Lucas
 Mr. and Mrs. John F. Ludt
 Mr. Donald S. Lum
 Mr. Edward C. Lyman
 Mrs. Kathryn T. Mace
 Ms. Jean Magee
 Donna W. Markey, NP
 Ms. Lynn M. Markin
 Erin D. Marley, NP and Mr. Cole Marley
 Ms. Cynthia C. Marshall
 Ms. Donna N. Marshall
 Mr. and Mrs. Alan Martin
 Ms. Darcie Martin
 Ms. Keri A. Martin
 Ms. Tina A. Martin
 Mrs. Nicole Masterson
 Ms. Pamela P. Mathews
 Dr. John Mattern III
 Mr. Jackson T. Maust
 Mr. John T. Mauzy
 Ms. Joanne S. Maynard
 Ms. Penelope McAllister
 Mr. William K. McAllister
 Ms. Erica D. McCauley
 Mr. and Mrs. C. T. McCormack
 Ms. Jennifer McCrickard

Mr. Craig McCue
 Mr. and Mrs. T.C. McDaniel III
 Ms. Crystal L. McDilda
 Ms. Olympia D. McDonaldson
 Ms. Sarah A. McGinnis
 Ms. Marilyn B. McIlvain
 Mr. Thomas S. McIlwain
 Martha D. McKechnie, MD
 Mr. Bobby L. McLain
 Ms. Melanie E. McWhorter
 Ms. Caroline H. Mecom
 Ms. Connie K. Medaris
 Mr. Andrew Meek
 Mrs. Rita Meek
 Mrs. Suzanne Goff Meeks
 Ms. Marilyn M. Mejia
 Mrs. Barbara W. Melby
 Mr. James E. Menchinger
 Ms. Sandra L. Meyer
 Mr. and Mrs. Denny Michal
 Mr. and Mrs. Alan Miller
 Ms. Laura B. Miller
 Ms. Mary E. Miller
 Mr. Max B. Miller, Jr.
 Ms. Deanne Mills
 Mr. and Mrs. Lyle Moffett
 Ms. Bethany B. Mohler
 Ms. Vickie Montigaud Green
 Mr. and Mrs. Eugene H. Mooney
 Mr. and Mrs. J. Robert Moore
 Mrs. Sue C. Morley
 Mr. and Mrs. James S. Morrison
 Ms. Lorene D. Moss
 Ms. Karen O. Moyer
 Mr. Ronald W. Moyer
 Mr. and Mrs. Carl E. Mullins
 Mr. and Mrs. Garland Mullins
 Munters Corporation
 Mr. and Mrs. Larry W. Neff
 New Hope Chorus
 Dr. Brandi T. Nicholson
 Mr. and Mrs. Bill Noonan
 Kim E. Norheim
 Mr. and Mrs. P. Robert Oakes
 Mr. Michael J. OHara
 Ms. Lisa Ohlinger Diaz
 Ms. Yoshie M. O'Neill
 Mr. and Mrs. Jim Oppy
 Ms. Lindy Lee Ott
 P & S Electric, LLC
 Ms. Kathleen K. Paccadolmi
 Ms. Margaret J. Painter
 Mr. and Mrs. Frank C. Pancake, Jr.
 Mrs. Donna J. Pangburn
 Ms. Suzanne D. Pasquini
 Ms. Kristy Patrick
 Mr. and Mrs. Douglas Patterson
 Mr. and Mrs. David A. Peck
 Ms. Elizabeth S. Peele
 Mr. and Mrs. Peter Pekala
 Ms. Cynthia G. Pender
 Ms. Beverly H. Perrie
 Mr. and Mrs. Edward D. Perry
 Ms. Suzanne Persina
 Ms. Venessa A. Peters
 Ms. Emily Peterson
 Ms. Linda Lee Phillips
 Dr. Stephanie Pitsilos and Mr. Jason Stell
 Mr. and Mrs. G. L. Pittman, Jr.
 Mr. Matthew A. Plauche
 Mr. and Ms. James Plecker
 Mr. and Mrs. Roy B. Powell

Mr. David E. Powell
 Presbyterian Women of Bethel Church
 Ms. Marjorie M. Price
 Mr. and Mrs. Adam Printy
 Ms. Amy D. Prochaska
 Ms. Elizabeth F. Propst
 Ms. Penny Pruitt
 Mr. and Mrs. David D. Pustilnik
 Ms. Margaret S. Pyle
 Ms. Michelle Raber
 Mr. Theodore J. Rabusseau
 Mr. Galen S. Rafferty
 Mr. and Mrs. Carson Ralston
 Ms. Samantha D. Ralston
 Ms. Sarah A. Ralston
 William and Mary Ratigan
 Marvella and Jeff Rea
 Ms. Debbi G. Reed
 Mr. and Mrs. George E. Reed, Jr.
 Mr. and Mrs. John F. Reynolds
 Ms. Corine B. Rhodes
 Mr. and Mrs. Samuel E. Richardson
 Mr. Leonard S. Riley
 Mr. and Mrs. W. Douglas Riley
 Ms. Janet Ritz
 Mr. Calvin L. Roberts II
 Ms. Karen Robertson
 Ms. Virginia Robinette
 Ms. Frances A. Robson
 Ms. Carol A. Rohlfing
 Mr. Jessie Rohrer
 Mr. Glenn Rose
 Ms. Pamela S. Rose
 Ms. Joan K. Rozeveld
 Ms. Constance K. Sachlis
 Mr. Eric Salemi
 Tracy Sansossio, RN
 Ms. Joan T. Sayers
 Ms. Saralyn Saylor
 Mrs. Annette L. Schaff
 Ms. Heike Scheuble
 Haley W. Schultz, LPN
 Mr. Adam Schwartz
 Ms. Ann A. Scott
 Ms. Carla W. Scott
 Ms. Judy Scotto
 William and Debra Sedr
 Linda Seestedt Stanford, PhD
 Ms. Janice M. Selzer
 Mr. and Mrs. Keith Senderak
 Mr. and Mrs. Martin Senell
 Ms. Cindy Sheets
 Ms. Linda C. Sheets
 Ms. Martha M. Sheridan

Ms. Janna Shields
 Mr. R. Tucker Shields III
 Mr. and Mrs. Andrew L. Shifflett
 Mr. and Mrs. Michael L. Shiflet
 Mr. and Mrs. William R. Shiflet
 Ms. Tammy B. Shipe
 Ms. Linda Silling
 Ms. Jean H. Simmons
 Ms. Nicole Simmons
 Mrs. Phyllis W. Simmons
 Mr. and Mrs. Van E. Simmons, Jr.
 Mr. Vernon R. Simmons
 Dr. Elizabeth and Mr. Gregory Simms
 Ms. Kelsey A. Sims
 Mr. and Mrs. Glenn E. Siron
 Skyline Chapter Model A Club
 Ms. Diane Smallwood
 Dr. Diana A. Smith and Mr. Guillermo Ubilila
 Mr. and Mrs. James F. Smith
 Lara K. Smith, RN
 Ms. Melanie W. Smith
 Ms. Sheila Smith
 Ms. Talisa M. Snow
 Mr. and Mrs. Emory R. Snyder
 Ms. Jaclyn C. Snyder
 Mrs. Kay Snyder
 Mr. and Mrs. Richard W. Snyder
 Ms. Elizabeth M. Solomon
 Ms. Nancy T. Sorrells
 Mr. and Mrs. Thomas Southard
 Ms. Martha B. Sparks
 Mr. Michael H. St Clair
 Mr. Adrian Stacy
 Staunton Downtown Development Assoc.
 Ms. Debra Stevens
 Ms. Victoria Stogdale
 Ms. Valerie D. Stone
 Ms. Brenda Strawser
 Ms. Olivia Street
 Mr. and Mrs. Mark C. Strickler
 Ms. Lisa M. Sullivan
 Richard D. Suyes, PA
 Ms. Denise S. Swartz
 Helen and Gary Swats
 Ms. Dorothy G. Sweet
 Ms. Ruth W. Swisher
 Mr. and Mrs. Harold V. Tate, Jr.
 Ms. Vickie L. Taylor
 Ms. Elizabeth Terry
 Dr. and Mrs. E. R. Testerman, Jr.
 Ms. Brianna Thomas
 Mr. and Mrs. Stewart E. Thomas
 Mrs. Joyce C. Thomas
 Ms. Debbie Thompson

Mr. and Mrs. Robert D. Thompson
 Thrivent Financial
 Mr. and Mrs. James D. Todd
 Ms. Betty W. Truslow
 Ms. Crystal G. Truxell
 Lisa A. Tungate
 Ms. Mary Turner
 Ms. Barbara Turnwall
 Ms. Lisa Tuttle
 Ms. Katherine W. Tyree
 Ms. Adrienne Underwood
 Ms. Marian M. Updike
 Ms. Barbara J. Vaught
 Ms. Cynthia L. Vaught
 Ms. Cynthia R. Wade
 Ms. Linda A. Wade
 Mrs. Sue N. Wagner
 Ms. Donna V. Wait
 Mr. Jeffery D. Wampler
 Ms. Leng Sui Wang
 Ms. Jennifer L. Wanger
 Mr. and Mrs. Larry A. Washburn
 Mr. and Mrs. Joseph A. Watson
 Mr. Dirk A. Watts
 Waynesboro Newcomers Club
 Ms. Jacklynn A. Webb
 Mr. and Mrs. Robert A. Whaley
 Ms. Shirley A. Wheeler
 Mr. Kipp Whelan
 Mr. and Mrs. Marion R. Whisman
 White Hill Church of the Brethren
 Mrs. Connie B. Widner
 Ms. Kimberly Williams
 Ms. Jessica L. Wilmer
 Mr. and Mrs. Brennon C. Wilson
 Ms. Shirley A. Wimer
 Ms. Mary G. Wiseman
 Ms. Jennifer Wittmann
 Women of the Moose No. 1235
 Mrs. Dinah L. Wood
 Ms. Helen T. Wood
 Mr. and Mrs. Henry W. Wood
 Ms. Sue E. Woodard
 Ms. Ashley N. Woodson
 Ms. Dianne T. Woodworth
 Ms. Joan D. Wray
 Ms. Bonita G. Wymer
 Mr. Wayne Wymer
 Ms. Linda Yancey
 Ms. Cynthia Young
 Ms. Patti Zadrozny
 Mr. and Mrs. Joseph E. Zapotoczny
 Mr. Stephen E. Zapotoczny

Legacy in Action

It was a day of celebration when Anthony Thornton was announced as the recipient of the Augusta Health School of Clinical Laboratory Science Tuition Work-Grant Scholarship. Anthony is pictured with retired pathologist, Dr. Julie Plumbley and Lab Clinical Education Program Director, Ann Ridder. This Tuition Work-Grant Scholarship covers the full cost of tuition and is made possible through the Kathy Miller Memorial Scholarship Fund.



Kathy Miller was the Education Coordinator for the School of Clinical Laboratory Science from October, 2008 until her passing in October, 2011. Prior to her Coordinator role, she served as the laboratory Hematology Supervisor, during which time she had significant involvement with the School. In both positions, she served as a mentor and friend to countless CLS students. The Kathy Miller Memorial Scholarship Fund was formed through the AH Foundation.

GIFTS IN KIND

AccuReg
 Advance Auto Parts
 Sheila Ahmadi
 Allegheny Mountain Institute
 Emma Allen
 American Shakespeare Center
 AMN Healthcare
 Arby's - Stuarts Draft
 Arby's - Waynesboro
 Ashley Orthodontics
 Augusta County Public Library
 Augusta County Service Authority
 Augusta Dental
 Augusta Health Care, Inc.
 Augusta Kitchen
 Carol Austin
 Roger W. Authers
 Emily Bardeen
 Barton Malow Construction
 Margaret Battey
 Jane Baylor
 Megan Bayonet
 Ainsley Bloomfield
 Blue Ridge Community College
 Judy E. Bobsin
 Linda H. Bowles
 Irene Bradley
 Brethren Disaster Ministries (Church of the Brethren)
 Brightview Baldwin Park
 Barbara A. Brothers
 Ann Bucklin
 Builders FirstSource
 Grant Burkholder
 Cadence Inc.
 Calvary United Methodist Church
 Canteen Vending Services
 Central United Methodist Church
 Charlie Obaugh Chevrolet Buick GMC
 Chik-fil-A Waynesboro
 Church on the Hill
 John Charles Clark
 Clif Bar & Company
 Coca-Cola Bottling Co. Consolidated
 Commonwealth Pizza
 Carlene Conner-Kueck
 Converge Local
 Sylvia Crawford
 Danone
 Donna Davis
 Denise Ramey Team, Long and Foster
 Charlottesville
 Domino's Pizza
 Bona Dresch
 Dunkin Donuts Staunton #340875
 DuPont Community Credit Union
 Essentially Zen Shop
 Rebecca Evans
 First Baptist Church (Waynesboro)
 Fishburne Military School
 Carol Fitzgerald
 Susanna Forren
 Barbara L. Franklin
 Mark Frazier
 Emma Fulk

G & G Cleaning, LLC
 Gateway Cafe
 Melissa Gatitis
 Marney Gibbs
 Martha H. Glass
 Good Shepherd Anglican Church
 Margaret Grady
 Emily Greene
 Sandra Greene
 Greenmonte Fellowship
 Annette Gregory
 Mary Grace Groseclose
 Kate Guenther
 H & R Contractors, Inc.
 Harbor Freight Tools
 Harrisonburg First Church of the Nazarene
 Stephen R. Hart
 Brian J. Harvick
 Rosalie Havenner
 HealthSCOPE Benefits, Inc.
 Odile Heisel
 Julia Hellberg
 Debby Henry
 Hershey Chocolate of Virginia
 Diane Higgins
 Lynn Hanger Hill
 Hollister Incorporated
 Terry Holmes
 Home Depot
 Hotel 24 South Hotel & Conference Center
 Colby Howell
 Mike Hull
 Iguana Azul Mexican Restaurant
 Laurie Jakoboski
 James Madison University
 Jersey Mike's Subs
 Yvonne M. Johns
 Elizabeth Jones
 Feliza Jones
 Susan K. Jones
 Cheryl Kent
 Ophie A. Kier
 Ralph Kirtland
 Kjellstrom-Lee Construction
 Lisa Klein
 Kroger Co.
 Joanne D. Lam
 Barbara Lambert
 Jennifer LaRosa
 Joan Leake
 Legends Outdoors
 Margery Lentz
 David A. Ley
 Barbara Linzey
 Loch Willow Presbyterian Church
 Diane Louvet
 Claire M. Love
 Lowe's Home Improvement
 Lowe's of Staunton
 Fran Ludlum
 C MacLaine
 Ed Mair
 Bill Martin
 Mike Martin
 Nancy Martin
 Martin's Food of Harrisonburg
 Martin's Food of Staunton
 Martin's Foods of Waynesboro

David E. Matheney
 Marguerite R. McDonald
 Anne P. McGovern
 McKee Foods Corporation
 Ron McManamay
 Jennifer McNee
 Nicole Meadows
 Maryanne Meisenheimer
 Irene Miller
 Miller's Bake Shoppe
 Moose Lodge #1309
 Cerissa Morrisette
 Murphy Deming College of Health Sciences
 Newtown Bakery
 Old Providence Church
 OxiFresh Carpet Cleaning - Charlottesville
 Jane Pederson
 Linda T. Peery
 Barbara Phillips
 Pilgrim Christian Fellowship
 Plaza Azteca
 Barbara Preuss
 Queen City Creative
 Billie Quigley
 Quilts of Valor Foundation
 Ragged Branch Distillery
 Deanna Reese
 Responsible House
 Cathy Rexrode
 Janet Rhodes
 Cheryl Rosberg
 Kathleen Rottenborn
 SalonCentric
 Scotto's Italian Restaurant
 Rob Seal
 Tracey T. Seamster
 Semco Services, Inc.
 Donald Sharretts
 Sheetz - Staunton
 Shenandoah Valley Quilters Guild
 Susan Shiflet
 Catherine B. Shipe
 Carol M. Showalter
 Jenny Showalter
 Lula Belle Shuler
 Libby Sieber
 Silverback Distillery
 Song's Sewing Shop
 Emmeline K. Soyars
 Specialty Blades, Inc.
 Spring Hill ECO Presbyterian Church
 St. John's Catholic Church
 Staunton Lodge B.P.O. Elks #351
 Staunton Rotary Club
 Doug Stegura
 Strite's Donuts
 Terry Sumey
 Robyn & Brandon Summerfield
 Sweet Bliss Bakery
 Eva Talbert
 Target
 Frank Thacker
 Thai Staunton
 The Alteration Shop
 Anita Thornton
 Albert Tinsler
 Tony's Pizza & Italian Restaurant
 Tom Tourje

Tropical Smoothie Cafe
 Annmarie Trost
 Judy Troutman
 Tim Troxler
 Kristin C. Turza
 Valley Pike Farm Market
 Mary Ann Velluto
 Patricia Gail Ventura
 Verona Moose Lodge #2172
 Verona United Methodist Church
 Virginia Department of Transportation Staunton District

Virginia School for the Deaf and the Blind
 Walmart Neighborhood Market
 Phyllis Wampler
 Waynesboro Elks Lodge BPOE 2270
 Waynesboro Public Schools
 Shirley W. Webster
 Westwood Animal Hospital
 Wild & Free LLC Holistic Day Spa
 Carole S. Williams
 Flora Williams
 Mary Ann Williams

Bonnie Wilmer
 Wilson Memorial High School
 Winfield Ministries Inc.
 Wintergreen Resort
 Darlene Wiseman
 Stephen Wittenberg
 Catherine W. Yeatts
 Bob Young
 Zeus Digital Theaters

IN HONOR OF

Augusta Health Care, Inc.

Augusta Health Care Credit Union

Mr. and Mrs. David Barr

Mr. and Mrs. Stewart E. Thomas

Ms. Melanie A. Benson

Mr. Lyle S. Benson

Ms. Ramona J. Bosserman

Mr. and Mrs. Robert D. Thompson

Dr. Glenn Brammer

Mr. and Mrs. Leo A. Bares
 Ms. Elizabeth Anne H. Branch

Ms. Deborah F. Brown

Mrs. and Mr. Lora A. Dury

Dr. Christopher T. Bunn

Dr. and Mrs. Jeffery B. Young

Mr. Enrique Canales

Ms. Kennon Bowen
 Ms. Vickie Montigaud-Green

Laura E. Cook, PA

Ms. Olivia Street

Dr. Robin Crowder

Tami and Mark Radecke

Dr. Raymond Cruz

Mr. and Mrs. Forrest L. Dellinger

Mrs. Diana Easley

Ms. Virginia A. Warrick

Makenna Eppard, RN

Ms. Mary E. Miller

Dr. C. Buckley Gillock

Mr. R. David Anderson
 Dr. David R. Mirra

Ms. Debra A. Gray

Dr. Sonja M. Musser

Dr. William R. Jones III

Mr. Matthew A. Plauche

Col. Joseph H. Just (Ret) and Charlene Just

J. Scott Just, MD and Casey R. Just

Mr. Stan Kleiner

Ms. Saralyn Saylor

Anne R. Liskey, RN

Ms. Donna A. Lawyer

Scott and Hilda Litchfield

J. Scott Just, MD and Casey R. Just

Ms. Pamela P. Mathews

Mrs. and Mr. Lora A. Dury

Dr. William B. McKibbin

Mr. John T. Mauzy
 Mrs. Deborah Ray

Mrs. Ann D. McPherson

Mr. and Mrs. A. Thomas Fechtel

Ms. Anne M. Milching

Mr. L. R. Post

Ms. Kathleen W. Miller

Mr. L. R. Post

Ms. Amy Mumbauer

Mr. L. R. Post

Ms. Kimberly B. Nieman

Dr. Sonja M. Musser

The Reverend John C. Peterson III

Ms. Emily Peterson

Mr. Deane "Burnie" F. Powers

Tami and Mark Radecke

Dr. Joseph L. Ranzini

Ms. Anne Aycok

Ms. Myra L. Robertson

Mr. Michael A. Cherubin

Mr. Jose Sanchez

Mr. and Mrs. Robert R. Carrothers

Robert and Liz Schreiber

Mid Valley Press

Dr. Gavin T. Slitt

Mr. Michael A. Cherubin

Cynthia F. Smith, RN

Ms. Donna A. Lawyer

Dr. John A. Stathos, Jr.

Ms. Dorothy G. Sweet

Dr. Kenneth Sternberg

Ms. Betty Lester

Dr. Brian Stisser

Mr. Robert S. Brooks

Robert "Bobby" and Susan Thompson

Ms. Ramona J. Bosserman

Dr. William G. Thompson

Mrs. Mary L. Huppuch

Dr. Shalendra K. Varma

Mr. and Mrs. Forrest L. Dellinger

Dr. George Verghese

Mrs. Lola B. Hensley

Mr. and Mrs. Gary Wade

Mr. and Mrs. Harold Cook

Mrs. Lillian G. Walge

Mr. and Mrs. Mitchell C. Sockett

Ms. Vicky G. Wood

Mr. and Mrs. Daniel R. Baker



IN MEMORY OF

Mr. Chuck Ajemian

Mrs. Anne Marie Ajemian

James and Elaine Aldhizer

Carl and Cheryl Rosberg

Mrs. Sharon Barney Wine Alexander

The Honorable and Mrs. R. Steven Landes

Mr. Steven Glenn Allen

Janice Coffey

Mr. James Wilson “Jim” Armstrong

Mr. and Mrs. David W. Driver

Ms. Barbara Knick

Mr. Earl Cornelius Arnold

Mr. Vance Blosser

Robert and Ethel Baker

Mr. and Mrs. Daniel R. Baker

Mr. John Luther Barr

Mrs. Elaine H. Barr

Mr. and Mrs. Charles T. Drumheller

Mr. and Mrs. O. George Drummond

Mrs. Sue E. George

Mr. and Mrs. Daniel L. Kelley

Mr. and Mrs. Gregg Kesterson

Ms. Elizabeth S. Peele

Mr. and Mrs. John J. Ross

Mr. Robert “Bobbie” L. Beard

Mrs. Glenna G. Beard

Mr. Donald “Donnie” Wilson Benson

Ms. Patricia A. Benson

Mrs. Catherine L. Beverage

Ladies Auxiliary to Elliot’s Knob Aerie No. 680

Mr. Fred Andrew Beverage, Jr.

Ms. Betty B. Arbaugh

Ms. Linda B. Arbaugh

Mr. James L. Beverage

Ms. Thelma B. Chestnut

Mr. Kevin L. Davies

Mr. W. Michael Dundas

DuPont Community Credit Union

Fisher Auto Parts, Inc.

Mr. William S. Hill

Ms. Ashley Lamay

Ms. Beverly H. Perrie

Ms. Janice M. Selzer

Mrs. Connie B. Widner

Ms. Shirley A. Wimer

Mr. Vernon D. Wooddell

Mr. Henry Lewis Black

Mrs. Martha B. Black

Ms. Kathy Claiborne

Mr. and Mrs. Bobby L. Seaman

Mrs. Sherry Wiltshire

Mrs. Linda Marie Blake

Ms. Mollie W. McCurdy

Mr. James A. Blasko

Ms. Barbara Lloyd

Mr. and Mrs. Denny Michal

Mrs. Eva Arbutus (Rhodes) Boggs

Mr. and Mrs. Michael Boggs

Mr. Louis W. Cook

Ms. Vickie M. Lam

Mr. John Robert Bolen

Mr. and Mrs. C. T. McCormack

Mr. Willard Allen Botkin, Sr.

Augusta County Service Authority

Mr. and Mrs. George F. Baylor

Mr. Bert Vinson Branan

Mr. and Mrs. Robert Shiflet

Mr. James Edward “Jim” Brooke

Mr. and Mrs. John D. Croushorn

Ms. Jennifer L. Wanger

Mrs. Norma Lee Brooks

Ms. Holly Brooks

Mr. Jerald Lynn “Jerry” Campbell

Mrs. Mary A. Campbell

Mr. Robert (Bob) Lee Campbell

Ms. Colleen Coyner

Mr. and Mrs. Alfred A. Swicegood

Mr. and Mrs. Steven C. Tabscott

Lieutenant Colonel Phillip Stanley Carletti

Mrs. Lois Carletti

Mr. and Mrs. Peter Pekala

Mr. Otis Gaylord Carpenter, Sr.

Vickie and Charles Burton

Mr. and Mrs. Lenard R. Fainter

Mrs. Mary Bishop Carter

Mr. Thomas W. Altizer

Ms. Elisabeth L. Bohnengel

The Honorable and Mrs. Rudolph

Bumgardner III

Mr. and Mrs. Mitchell O. Carr

Henley and Mary Carter

Mr. and Mrs. William H. Carter

Mr. and Mrs. James I. Chambers

Mr. C. Rick Chittum

Mr. and Mrs. H.C. Stuart Cochran

Mr. and Mrs. Stephen L. Coffman

Mr. and Mrs. John Dodd II

Ms. Reuak G. Evans

Mr. and Mrs. Cheryl and Rick Fauerbach

Mr. and Mrs. J. Gray Ferguson

Mr. and Mrs. William T. Frazier

Dr. and Mrs. William B. Hanna

Dr. and Mrs. Stevan T. Hanna

Mr. W. Bogart Holland

Mr. William K. McAllister

Mr. and Mrs. John C. McCue III

Mrs. Martha J. McDonough

Mr. and Mrs. William T. McIntyre, Jr.

Ms. Anne M. Menter

Mr. and Mrs. P. William Moore, Jr.

Ms. Susan M. Myers

Mrs. Dorothy D. Nelson

Mr. and Mrs. Frank C. Pancake, Jr.

Ms. Mary P. Pierce

Dr. and Mrs. Charles Polly

Mr. and Mrs. Samuel E. Richardson

Mr. Bret K. Ritchie

Mr. and Mrs. Tom E. Roberts

Mr. and Mrs. Thomas L. Robertson

Ms. Janice Rockwell

Mr. William M. Saxman

Mr. and Mrs. William R. Shiflet

Mr. and Mrs. H. Roller Shipplett, Jr.

Ms. Patricia M. Snyder

Mr. and Mrs. David W. Surratt

Helen and Gary Swats

Mr. and Mrs. Steven C. Tabscott

White, Withers, Masincup & Cannaday, PC

Ms. Nancy H. Whitmore

Mrs. Murphy T. Wilson

Ms. Helen T. Wood

Ms. Joan D. Wray

Mr. and Ms. Fred B. Yelverton

Mrs. Mary L. “Lou” Cary

Mr. Robert S. Brooks

Mr. Ron W. Harris

Ms. Sarah A. Ralston

Ms. Marcia L. Smith

Mrs. Lisa Haverland (Warren) Cashatt

Mr. Andrew J. Cashatt

Mrs. Mary C. Catherwood

Mr. and Mrs. Victor Vernon III

Ms. Shelva Jean (Marcum) Chadwell

Augusta Health QRM

Mr. and Mrs. William C. Flournoy

Mrs. Cecille Brooks “Frances” Chandler

White Hill Church of the Brethren

Ms. Maxine J. Chittum

Mr. and Mrs. Thomas H. Chittum

Mr. Andrew Chorba

Mr. Richard Z. Atkinson

Ms. Elaine Clark

Mr. and Mrs. Jerrel T. Knight

Mrs. Phyllis May Clark

Mr. and Mrs. Victor Vernon III

Mr. Joshua “Josh” Aaron Cline

Mary N. Mannix, FACHE

Ms. Jane Jones (Mohler) Coffey

Mr. Wayne E. Chittum

Mr. and Mrs. Thomas Jones

Mr. Ed Lindsey

Ms. Cynthia C. Marshall

Ms. Alicia D. Mohler

Ms. Rebecca C. Mohler

Ms. Ann A. Scott

Ms. Linda C. Sheets

Spring Hill Presbyterian Church ECO

Mr. Jacob H. Wamsley II

Ms. Martha B. Ware

Mrs. Virginia “Kitty” Coffey

DuPont Community Credit Union

Mr. James L. Comerford

Lawrence Comerford, MD

Mr. Bartholomew “Bart” Frederick Conlon, Jr.

Mrs. Anne Marie Ajemian

Augusta Health Care, Inc.

Mr. Marvin L. Chaplin

Mr. and Mrs. Irvin L. Erler

Mr. and Mrs. George E. Reed, Jr.

Mr. Curtiss Elwood Cook

Augusta Health Care, Inc.

Mrs. Betty Jo Marie (Lent) Cox

Mr. and Mrs. John J. Ross

Mr. Richard L. Crookshanks

Mr. Kevin S. Cleveland

Mr. and Mrs. Clarence F. Hamrick

Mrs. Rebecca Harmon

Ms. Michelle Nuckols

Mr. and Mrs. Peter Pekala

Ms. Janet Ritz

Ms. Debra Lee Curry

Rattlesnake Ridge Hunt Club

Ms. Shirley Curry

Ms. Melissa Curry

Mr. Barry Lynn Deacon

Mr. and Mrs. Mark C. Fontenot

Ms. Dolly Jean (Madison) Desper

Ms. Penny L. Desper
Ms. Margaret Mooney
Mrs. Susan Swan

Ms. Peggy S. Desper

Ms. Gail B. Ferguson
Ms. Mary C. Flynn
Mr. and Mrs. Jerry L. Jarvis
Ms. Ruth W. Swisher

Mrs. Joyce Ann Rowe Dickerson

Ms. Nancy W. Hinchee
Mrs. Kay Snyder
Mr. and Mrs. Raymond E. Via, Sr.
Mrs. Sue N. Wagner

Mrs. Susan C. Dillow

Ms. Kathryn F. Anderson

Ms. Elsie Claytor Doyle

Mr. and Mrs. Charles Fridley

Ms. Irene M. Driver

Mr. and Mrs. David R. Graham

Mr. Victor Robert Drumheller

Mr. and Mrs. John J. Ross

Mrs. Doris Marie Litts Dury

The Honorable and Mrs. R. Steven Landes

Mr. Hunter Eugene “Buck” Earhart

Mr. and Mrs. Emory R. Snyder
Ms. Joyce C. Thomas

Mrs. Catherine (Cathy) Flory East

Skyline Chapter Model A Club

Mrs. Joyce Lee (Hull) Eckard

Mr. and Mrs. Thomas Jones
Mr. and Mrs. James F. Smith
Mr. and Mrs. Richard W. Snyder

Mr. James “Jim” B. Ferguson

Mr. Ernest H. Dwight

Mr. Daniel Clayton Fields

Ms. Pauline H. Reese

Mr. Thomas J. Foley, Jr.

Mrs. Nancy Ann Houser

Mrs. Mary Roberta Impink Fosnocht

Mary N. Mannix, FACHE

Bill and Ruth Fox

Dr. Pamela R. Fox and Mr. Dan Layman

Mr. Martin Frankel

Mrs. Bonnie W. Kimmett

Mr. Thomas Morton Gathright II

Anonymous
Mr. Thomas M. Gathright III
Mr. and Mrs. Richard Haupt
Mr. and Mrs. Thomas E. Thompson

Mr. Glenn Elwood Gochenour

Forest Chapel Church
Mr. and Mrs. Richard W. Liskey

Mr. Herbert “Bud” Godschalk

Mr. and Mrs. Herbert L. Godschalk III

Mrs. Eva Louise Good

Ms. Doris Jean Taylor Bishop
Mr. and Mrs. William H. Hutchens
Mr. and Mrs. Roy B. Powell
Mr. and Mrs. Michael L. Shiflet
Whitesel Brothers, Inc.

Mrs. Judy Ann Gordon

DGO Corporation
Emmanuel Women’s Fellowship
Mr. Doug W. Gordon
Ms. Jean H. Simmons

Mrs. Crystal Grove

Mr. John D. Grove

Ms. Shirley Jane (Moomau) Hall

Ms. Carolyn H. Palmer

Ms. Betty Luvene (Harris) Hanger

Dr. William L. Harrell and Dr. Tom Arbaugh
Mr. Thomas S. McIlwain
Ms. Joan T. Sayers

Dr. Howard Michael Hanna, Jr.

Dr. and Mrs. Stevan T. Hanna

Ms. Ardith Hanula

Michael and Patricia Abbott Giving Fund-Fidelity
Charitable

Ms. Noellene L. Hare

Ms. Sandra L. Spry

Mr. Gordon L. Harper

Glossbrenner United Methodist Sunday School
Ms. Angela Henderson-Boyles
Mr. and Mrs. Thomas Southard
Mr. and Mrs. Paul P. Vames

Mr. Jesse W. Hartman, Jr.

New Hope Chorus

Mrs. Martha C. Hartman

Anonymous

Mrs. Patricia Mae Hash

Ms. Gail Hundley
Tami and Mark Radecke

Mr. Timothy Harvey Hayes

Ms. Susan L. Bess
Mr. and Mrs. David S. Douthett
Mr. and Mrs. C. S. Johnson
Mrs. Sue C. Morley

Mr. Elwood Martin Hays, Sr.

Mr. and Mrs. Johnnie G. Anderson
Vickie and Charles Burton
Mr. and Mrs. Jim Oppy

Mr. Melvin Willis Hays

Ms. Linda H. Bowles
Ms. Thelma Campbell
Mr. and Mrs. Edward D. Perry
Mr. and Mrs. Ron Shifflett
Mr. and Mrs. Michael A. Walters

Mrs. Phyllis Marie (Moneymaker) Hays

Ms. Linda H. Bowles
Ms. Thelma Campbell
Mr. and Mrs. Jeffrey H. Eckard
Mr. and Mrs. John M. Harris
Mr. and Mrs. James W. Hinton
Mr. and Mrs. Ron Shifflett
Mr. and Mrs. Mark C. Strickler
Mr. and Mrs. Michael A. Walters

Ms. Joyce Ann (Claytor) Henderson

Moffett Paving & Excavating Corp.
Ms. Debbi G. Reed

Mr. John Henry Hensley

Ms. Carol D. Farrar
Ms. Leah M. Lucas
Ms. Nancy T. Sorrells

Mrs. Virginia Dale Hewitt

DuPont Community Credit Union
Mr. and Mrs. W. E. Leary

Mrs. Deloris “Dolly” Barela Hipes

Mr. and Mrs. Donald O. Fravel
Munters Corporation
Mr. and Mrs. Douglas Patterson
Mr. and Mrs. Ron Shifflett

Mr. Bobby Lee Horne

Mr. and Mrs. Terry S. Adams
Elliott’s Knob F.O.E. Aerie 680
Ms. Meredith C. Lantz

Mr. Stanley Eugene Hostetter

Mr. and Mrs. Chester L. Bradfield
Mr. and Mrs. Harold Cook
Mrs. Barbara W. Melby

Ms. Juanita “Ruby” Howell

Ladies Auxiliary to Elliot’s Knob Aerie No. 680

Mrs. June Belle (Riddle) Huff

Mrs. Sue E. Correll
Mr. Michael J. OHara

Mr. Lee Huffer Sr.

Augusta Health Care, Inc.
Mr. Lee R. Huffer, Jr.

Ms. Georgia Mae Hughes

Mr. and Mrs. William H. Hutchens

Sarah and Bud Hutchens

Buddy Hutchens

Ms. Anna Geneva Johnson

Ms. Delores B. Floyd

Mr. Michael Stephen Jones

Ms. Carolyn H. Franger

Ms. Myra Dawn (Eller) Jones

Mr. and Mrs. Brent Hoffman

Mr. Raymond Junior Keene

Elliott’s Knob F.O.E. Aerie 680

Mrs. Catherine L. “Rennie” (Gregory) Keith

Mr. and Mrs. Joseph A. Watson

Mr. Wesley Douglas Kidd

Mr. James Aitken
Ms. Judith A. Barr
Ms. Donna L. Martin

Mrs. Ruth Anne (Beverly) Kirby

P & S Electric, LLC
Ms. Carla W. Scott

Mrs. Myrtle Lou Kite

Mr. and Mrs. Jerry P. Kite
Mr. and Mrs. David Layne
Ms. Elizabeth M. Solomon

Mr. Stan Kleiner

Airline Hydraulics

Mrs. Sarah Elizabeth (Oliver) Knorr

Mr. and Mrs. John C. McCue III

Mrs. Tammy S. Kohler

Ms. Jessica Simpson

Mr. John Gregory Lam

Mrs. Joanne D. Lam
Mr. and Mrs. W. Douglas Riley
Mr. and Mrs. David M. Zeiner

Ms. Sara Ann Lamb

Presbyterian Women of Bethel Church

Mrs. Martha M. Lambert

Mr. Ray J. Lambert, Jr.

Mr. Robert Frederick Lancey

Ms. Constance K. Sachlis
Mr. and Mrs. Harold V. Tate, Jr.

Ms. Marcella S. Landram

Mr. and Mrs. William D. Burgess
Mr. H Windley Dunbar
Mr. and Mrs. H. Gregg Gray
Mr. and Mrs. Martin Senell

Annie and Frank Lefler

Mrs. Sandra Botkin

Mr. James H. Lockridge

Mr. and Mrs. R. Trenton Leonard

OUR 2020 DONORS

Mr. Harding Watson Lonas

Mr. and Mrs. David Engel

Ms. Blanche Mae Inscow Long

Mr. Andrew Meek

Ms. Peggy Joyce Lynch

Ms. Linda Hirw
Redbeard Brewing Company
Mr. Eric Salemi
Staunton Downtown Development Assoc.

Mr. Alfred Floyd Maddox

Augusta County Federal Credit Union
Mr. and Mrs. Wade W. Hobbs
Mrs. Ellen C. Maddox

Ms. Mary Addington Main

Mr. Ivo Romenesko

Mr. Wymer Wyche Manning, Jr.

Mrs. Carter A. Lundquist

Mrs. Sue Ann (Robinson) Marion

Ms. Barbara Turnwall

Mr. William "Bill" Randolph May

Mr. R. David Dove
Mr. and Mrs. Burk Hershey
Mr. Daniel Rosebough
Mr. and Mrs. Robert A. Whaley

Ms. Doris Louise (Hunter) McChesney

Ms. Gloria L. Dove
Mr. and Mrs. Gordon R. Glatfelter
Mr. and Mrs. Max Hirtriter, Jr.

Ms. Leona "Babe" (Michael) McCray

Vickie and Charles Burton
Mr. and Mrs. Bob Jordan
Mr. and Mrs. Van E. Simmons, Jr.

Mrs. Nancy Clatterbaugh McCray

Mr. and Mrs. Daniel R. Baker
Sandra Gum Baker
Mr. and Mrs. Gary Bartolacci
Blue Ridge Appraisal Co. LLC
Mr. and Mrs. Oscar Boetticher
Charlie Obaugh Chevrolet Buick GMC
Mr. Charles R. Clatterbaugh
Mr. and Mrs. G. Richard Cox
Mr. R. David Dove
Elliott's Knob F.O.E. Aerie 680
Ms. Charlotte F. Fitzgerald
Ms. Mary Annis D. Forsyth
Mr. and Mrs. Max Hirtriter, Jr.
Mr. and Mrs. Otis W. Holley
Mr. William K. McAllister
Mr. Max B. Miller, Jr.
Mr. Ronald W. Moyer
Mr. Bret K. Ritchie
S & W Home Appliance Corporation
Mrs. Joan C. Shackelford
Ms. Melanie W. Smith
Staunton Lodge B.P.O. Elks #351
Helen and Gary Swats
Ms. Barbara J. Vaught

Ms. Venita Valarie Campbell McCray

Ladies Auxiliary to Elliot's Knob Aerie No. 680

Mr. James "Jim" Edward Meek

Ms. Vickie M. Lam

Mr. Sheldon Odell Melton

Mr. and Mrs. Delmer G. Botkin
Mr. David Brown
Ms. Lelia J. Clem
Mr. and Mrs. Stanley E. Craun
Electric Connection, Inc.

The Honorable and Mrs. R. Steven Landes

Mr. Vernon R. Simmons

Mr. and Mrs. Paul P. Vames

Mr. and Mrs. Marion R. Whisman

Mrs. Janet Okin Meyer

Mr. Stuart R. Allen
Mr. and Mrs. Lawrence Cline
Mr. and Mrs. Kenneth K. Farley
Mrs. Donna Fortin
Mrs. Ruth M. Frauendorf
Ms. Jacqueline A. Harrilchak
Infinity Fuel Cell and Hydrogen, Inc.
Mr. and Mrs. Robert P. Kuykendall
Ms. Caroline H. Mecom
Mr. Harry E. Meyer
Mid-Atlantic Region, VMCCA
Mr. and Mrs. Alan Miller
Mr. and Mrs. Donald E. Pomeroy
Mr. and Mrs. David D. Pustilnik
Mr. Kenneth Seymour
Skyline Chapter Model A Club

Ms. Carolyn Buscemi Miller

Augusta County Service Authority
Ms. Lynn M. Markin
Ms. Janice Rockwell
Ms. Sheila Smith

Ms. Carolyn Buscemi Miller

Ms. Joanne S. Maynard

Mrs. Martha Elizabeth Miller

Ms. Connie K. Medaris
Mr. and Mrs. David W. Surratt

Ms. Pamela Ashby Mitchell

Ms. Peggy M. Brust

Mr. Paul Webb Morris

Mr. and Mrs. T.C. McDaniel III
Mr. and Mrs. Eugene H. Mooney

Mrs. Bonnie Lou Burrow Moyer

Ms. Mary Alice Green
Ms. Shirley A. Wheeler

Ms. Louise M. Mutscheller

Ms. Denise Mutscheller

Mrs. Linda H. Myers

Ms. Helen L. Hogshead
Mr. Charles F. Myers

Ms. Brenda Gail Napier

Augusta Health Care, Inc.
Mrs. Elizabeth Benavitch

Charles R. Pauly, MD

Community Foundation of CBR for David &
Lucinda Fuller Fund
Whit (Albert W.) and Jane Morriss

Mr. Paul McNeil Penick

Mrs. Margaret T. Penick

Mrs. Marguerite "Peggy" Perkins

Dr. and Mrs. Richard S. Mansfield

Mr. Edward Anthony Persina

Ms. Beth Hordines

Mr. Harlan Hollis Phillips

Ms. Rae Anne M. Bushway
Ms. Anne E. Dolack
Ms. Frances A. Robson
Ms. Regina Sapona
Ms. Janet L. Tate

Ms. Mabel Virginia (Roberts) Phillips

Ladies Auxiliary to Elliot's Knob Aerie No. 680

Mrs. Effie Mae (Kiracofe) Pirsenbarger

Ms. Carol A. Rohlfing

Ms. Joan Carrol (Bridges) Pitsenbarger

Mr. Shane Conner
Mr. Edwin DesCombes
Ms. Muriel Early
Janet O. and Alfred P. Meyer
Skyline Chapter Model A Club

Mrs. Elizabeth "Betsy" Hatch Pollard

Ms. Michelle Raber

Mr. Francis(Frank) Purstell

Marcia and John Keppel
Waynesboro Newcomers Club

Ms. Patsy Reed

Ladies Auxiliary to Elliot's Knob Aerie No. 680

Ms. Dolly Pinkerton (Sweet) Rexrode

Mr. Ronnie L. Patterson

Mr. Charles Edwin Richardson

Ms. Chloia R. Barker
Ms. Gloria L. Dove
Mr. and Mrs. David W. Driver
Ms. Rebecca S. Lovegrove
Mr. Edward C. Lyman
Mr. and Mrs. Bill Noonan
Mr. and Mrs. Steven C. Tabscott
Ms. Dianne T. Woodworth

Mr. Jared Allen Roadcap

Mr. and Ms. James Plecker

Mrs. Judy E. Roberts

Augusta Health Care, Inc.
Buddy Hutchens
Ms. Tina A. Martin

Ms. Annie Robertson

Ms. Linda Silling

Mrs. Betty "B.J." Rohr

Houff Charitable Foundation

Ms. Mary Louise "Kitty" Rolfes

Ms. Carol A. Rohlfing

Mrs. Betty Lou (Reynolds) Rowe

Ms. Colleen Coyner
Mr. James E. Duncan
Mr. and Mrs. Herbert L. Godschalk III
Ladies Auxiliary to Elliot's Knob Aerie No. 680
Sheffield Promotions LLC

Ms. Stacey Dawn Seay

Mr. and Mrs. Kenneth L. Hall

Ms. Darlene Faye (Cash) Sensabaugh

Women of the Moose No. 1235

Mrs. Diane Dyer Sharp

Ms. Cynthia Q. Burnett
Mr. and Mrs. John J. Ross
Mr. and Mrs. Ron Shifflett

Mr. Donald L. Sheets

Ladies Auxiliary to Elliot's Knob Aerie No. 680

Mr. James Michael "Jim" Skinner

Mr. and Mrs. Carl E. Mullins

Ms. Donna Jean (Kyle) Smith

Ms. Violet M. Kramer

Mr. John Rawlin "Snuffy" Smith

Augusta Co-op Farm Bureau
Mr. and Mrs. Larry A. Washburn

Mr. Kenneth Ray Snyder, Sr.

Ms. Dee Anderson
Mr. and Mrs. Steven C. Tabscott

Mrs. Sharon D. Sozanski

Mr. John P. Sozanski, Sr.

Mr. Fred R. "Buddy" Stone

Ms. Melissa Buckshorn
Mr. Wendell L. Coleman

Mr. and Mrs. Charles A. Eckard
 Karen and Charles Fairchilds
 Mr. and Mrs. J. Vern Fairchilds, Jr.
 Mr. George W. Lockridge
 Mrs. Donna J. Pangburn
 Ms. Margaret S. Pyle
 Ms. Delise F. Sartini
 Mr. and Mrs. Glenn E. Siron
 Ms. Sharon Stanley-Rea
 Mr. and Mrs. Robert D. Thompson
 Mr. Jeffery D. Wampler
 Mr. and Mrs. Joseph E. Zapotoczny

Mrs. Clara Grace Stuples

Augusta Health Care, Inc.
 Hathaway — Paper, Packaging, Janitorial

Mrs. Diana Cline Summers

Mr. Frank M. Summers

Ms. Bettie Lou W. Swisher

Mr. and Mrs. Larry W. Neff

Mrs. Ramona Kelly Tait

International Sleep Products Assn.

Mr. Ronald Taylor

Ms. Karen L. Bateson
 Mrs. Helen A. Radakovich

Mrs. Sandra “Sandy” Taylor

Mr. and Mrs. John J. Ross

Mr. Dane Cooper Thompson

Mr. and Mrs. Jack Hillegas
 Marla and Gary(Rick) Reichenbecher

Mr. Dwight L. Tinsley

Mr. and Mrs. Richard O. Fitt
 Mr. and Mrs. Carson Ralston
 Ms. Mary G. Wiseman

Ms. Kathleen M. Tosco

Mr. C. Rick Chittum
 Mr. and Mrs. John C. McCue III
 Mr. James E. Menchinger

Ms. Joan K. Rozeveld
 Mr. Robert G. Small
 Mr. and Mrs. Steven C. Tabscott

Ms. Sandy Lee Trujillo

Mrs. Barbara L. Franklin

Ms. Frances L. Truxell

Ms. Mary Turner

Ms. Joy Ann Vail

Alter Trading Corporation
 Mr. and Mrs. Mark S. Brown
 Mr. and Mrs. Robert L. Cohen
 John and Cathy Matherly
 Ms. Sue E. Woodard

Mr. Charles Ralph Vailes

Mr. and Mrs. Marsden E. Champaign
 Ms. Amy Laser Kiger
 Ms. Darcie Martin
 Ms. Tina A. Martin
 Mr. Theodore J. Rabusseau
 Mr. and Mrs. Andrew L. Shifflett
 Mrs. Audrey C. Vailes

Mr. Roger A. Vincet

Mr. and Mrs. Emerson L. Deitz
 Mr. and Mrs. Benton Higgs
 Ms. Marcia L. Smith
 Mr. Stephen E. Zapotoczny

Mrs. Mary Margaret (Moses) Wampler

Mr. and Mrs. David M. Meek

Mr. John M. Weatherly

Ms. Kathleen W. Marshall

Ms. Ruth Templeton (Knight) Weaver

Ms. Brenda L. Hicks

Mr. Jimmie W. Webb, Jr.

Mr. and Mrs. Randal W. Hodge
 Mr. and Mrs. Alan Martin
 Mr. and Mrs. Bruce T. Mowry

Ms. Orlena Maxine Wright Wells

Home Instead Senior Care

Ms. Shirley Ann (Wade) Wilkins

Ms. Alice M. Holmes
 Ms. Marilyn M. Mejia

Ms. Rose Loreine (Martin) Wilson

Homer L. and Joyce C. Hite
 Ms. Wilma J. Huffer

Mrs. Mary Elizabeth (Shoemaker) Wood

Bruce and Nancy Bowman
 Ms. Dallas M. Herrington
 Mr. Galen S. Rafferty

Mr. Thomas Lee Wood

Mrs. Dinah L. Wood

Ms. Jo Ann (Burnett) Worrell

Augusta Health Care, Inc.

Mr. Robert “Bob” W. Young

Mr. and Mrs. Michael C. Breeding
 Ms. Ruth E. Chodrow
 Ms. Faye Cooper
 Elmore Hupp & Company, P.L.C.
 Dr. and Mrs. Charles Polly
 Mr. and Mrs. H. Roller Shipplett, Jr.
 Dr. and Mrs. E. R. Testerman, Jr.
 Mr. and Mrs. Paul P. Vames
 Ms. Patti Zadrozny

Ms. Andrea Helen Zani

Mr. Adam C. Green
 Mrs. Nicole Masterson
 Ms. Heike Scheuble

* Denotes anonymous donor

Generous donors from the community supplied in-kind gifts for patient and our team members. This kept us powered by gratitude.





PO BOX 1000
FISHERSVILLE, VA 22939

NON PROFIT ORG
POSTAGE & FEES PAID
AUGUSTA HEALTH



If you'd like to make a gift to the Augusta Health Foundation, please visit
augustahealth.com/foundation/give
or contact the Foundation office at 540-332-5174.