



AUGUSTA HEALTH
FOUNDATION

2019-2020 ANNUAL REPORT



Dear Friend of Augusta Health,

Gratitude. It's the word that best describes our feelings toward you for your generosity over the last year. Gratitude is also synonymous with a sense of obligation, grace and responsiveness, qualities that you've so bountifully displayed as our healthcare community combats the COVID-19 pandemic.

As always, the Augusta Health Foundation Board of Directors, staff and volunteers are incredibly grateful to our many contributors. We are feeling an even greater sense of gratitude this year, as we all grapple with a terrible virus wreaking havoc on our nation and our world. Like all communities across the nation, we have experienced swings in COVID-19 prevalence. Augusta Health has maintained surge capabilities throughout the entire pandemic, to assure we remain at the ready to care for our community. Our region has responded abundantly – above and beyond our imaginations – sending help for our healthcare workers without hesitation.

Community members, family and corporate foundations, business partners, civic clubs, church groups, employees and physicians have made an extraordinary difference in the lives of our patients and employees through their gifts to the Augusta Health Foundation.

In a 2006 study, Jorge Moll and colleagues at the National Institutes of Health found that the act of giving to charitable causes activates regions of the brain associated with pleasure, social connection, and trust, creating a “warm glow”

effect. If there's one thing we need now more than ever, it's the lasting warmth and compassion of a community bound together in a charitable response.

As you read through the following pages, we hope that you will recognize gratitude in its many forms: community members and businesses showing their appreciation for members of the Augusta Health front-line team with offerings of hand sanitizer, masks, goggles, gowns and other personal protective equipment; grateful patients and family members giving back through generous gifts to support cancer care, hospice or a new 3-D mammography unit; and Augusta Health team members contributing to the Employee Emergency Fund to support fellow associates going through a rough patch and needing temporary financial assistance. The Augusta Health family is touched and honored by the gratitude shown by so many with grateful hearts.

While in the midst of a global pandemic, Augusta Health and its caregivers continue to provide care, hope and healing to members of this community and beyond, 24 hours a day, 365 days per year, in times of joy and in times of illness, injury and, sometimes, even hopelessness.

Thank you for your support of Augusta Health's patients and team members. Your enduring gratitude sustains our work and furthers our commitment to serving this community.

With Our Deepest Gratitude,



Robin Crowder, EdD
Chairman,
Augusta Health
Foundation Board
of Directors



Tami G. Radecke, CFRE
Vice President-Community Partnerships,
Augusta Health

Executive Director,
Augusta Health Foundation

2020-21
Augusta Health Foundation
Board of Directors

Robin Crowder, EdD, Chair
Debra Callison, Vice-Chair
Julie Plumbley, MD, Secretary/Treasurer

Debra Callison
Jason Clarke
Robin Crowder, EdD
Sharon Driscoll
Dana Flanders
Drew Gogian, EdD, MSN, RN
Leticia Hardy, MD
Homer Hite
Amy Hougan, MSN, RN, CNL
Nancy Kyler
Mary N. Mannix, FACHE
Margaret Nathe, RN
James "Jim" Perkins, PhD
Julie Plumbley, MD
Joan Ranzini
Paula Rau, PhD
Mandi Smith, JD
Billy Sowers
Daniel Sullivan, MD

Ex-Officio:

Laurel L. Landes,
Chair, Augusta Health Board of Directors
Tami Radecke, CFRE



OUR MISSION:

Augusta Health Foundation inspires
community ownership through charitable giving
to advance health and wellness in our region.

Augusta Health is a 501(c) 3 non-profit organization. Your gift is tax deductible to the extent allowed by law.

PO Box 1000 | Fishersville, VA 22939 | 540-332-5174
ahfoundation@augustahealth.com | www.augustahealth.com/foundation

GALA TO-GO! NETS OVER
\$88,000
FOR FARMHOUSE RENOVATION



This year's annual signature event was one for the history books in more ways than one. Instead of a typical event held at a lovely venue, the Augusta Health Foundation encouraged guests to have the event wherever they wanted it to be—whether in the great outdoors or the comfort of their own home.

The Foundation originally scheduled the gala to be held at Afton's Veritas Vineyard in April, but the COVID-19 outbreak changed that plan. Yet,

"The food was delicious, the presentation was beautiful, and delivery seamless. We had a wonderful time sharing our meal with friends! Well done!"

— DIANE FOSNOCHT

the Gala-To-Go! turned out to be an innovative substitute for the Foundation's annual signature event that benefits a specific priority need at Augusta Health.

This year's special project was the renovation of a 1910 farmhouse to expand the AMI Farm at Augusta Health. Yet, that didn't stop the party from happening. "Our participants loved the food, presentation and the ease with which they were able to drive up and get their baskets," said Susannah Via, Manager of Special Gifts. "Guests purchased a total of 200 baskets (400 meals) which consisted of beef tenderloin or eggplant napoleon entrees, baguettes from Newtown Bakery, mini bottles of olive oil from Staunton Olive Oil, wines from Veritas Vineyard and handmade chocolate truffles."

The results were wildly successful, garnering over \$88,000 in net proceeds for the farmhouse renovation, surpassing the Foundation's goal of \$70,000.

"This event was a way for us to continue to fundraise for a special project by partnering with our wonderful Sodexo catering team, and support local businesses," Via said.

About the Farm and Farmhouse

The 1910 farmhouse, barn and silo are part of the original 1992 land purchase to establish the new Augusta Medical Center. The AMI Farm at Augusta Health was established on 1.25 acres of that land in 2018.

The goal of the AMI Farm at Augusta Health is to improve the well-being of Staunton, Augusta County and Waynesboro, VA residents through knowledge about, access to, and engagement in healthy eating and physical activity. To accomplish this goal, the farmhouse located on the Augusta Health campus requires renovations to provide a facility for nutrition education activities, farm staff offices and a fully-functional demonstration kitchen.



The AMI Farm at Augusta Health provides fresh fruits and vegetables for:

- healthy meals for patients, employees and visitors of the hospital;
- food boxes for patients who are food insecure or have chronic diseases; and
- nutrition education programs such as Food Pharmacy, Diabetes Prevention Program and cooking demonstrations.

Once refurbished, the farmhouse will include two classrooms, a fully-equipped test kitchen for cooking demonstrations and farm staff offices. It will serve as a hub for nutrition education and provide a real farm-to-table experience steps away from where fresh produce is grown and harvested. Renovation plans also include new landscaping for the exterior and new entrances to the farmhouse and a kitchen garden.

This initiative is an important one for Augusta Health, as its most recent Community Health Needs Assessment revealed concerns about health and nutrition in the Central Shenandoah Valley. The 2019 assessment found that only 29% of adults in the area reported eating five or more servings of fruits and vegetables a day. More than 21% said it was somewhat or very difficult to buy affordable fresh produce, and a nearly equal amount are food insecure, meaning they are often unsure of how they will obtain enough food for an active, healthy lifestyle.

Augusta Health is aiming to increase access to nutritious foods and provide nutrition education to improve the well-being and food security of the community.

LEARN MORE AT

www.augustahealth.com/foundation/farm

The Foundation is deeply grateful to all who supported the Gala To-Go! and to the generous event sponsors.

GRAND

Duke Cancer Network
SEGRA/Lumos Networks

PLATINUM

Augusta Emergency Physicians
BlackRock
Hancock Daniel
J.P. Morgan
Medcom Solutions
Russell Investments

GOLD

Crothall Healthcare
Foundation Radiology Group
Riddleberger Brothers, Inc.
Shentel Business
SunPrint Management
Westhills Realtors

SILVER

Blue Ridge Oral and Maxillofacial Surgery
Bottomline Software Inc.
Cirius Group
Cleverley + Associates
Connection
EdFinancial Services
Healthfuse
HealthScope Benefits
Impact Advisors
Jackson & Coker
McDonough Toyota
Medical Data Systems
RCM&D
Receivables Management Consultants, Inc.
State Collection Services
Valley Vital Care

Grants Fill Critical Needs at Augusta Health

In 2019, the Augusta Health Foundation made a difference in patients' and employees' lives through \$1,074,535 in grants that supported new and expanded care programs, new equipment and technology. Each year, the Augusta Health Foundation awards grants to departments and programs at Augusta Health that are designed to do two things: 1) improve the quality of care provided at the hospital, and 2) improve the overall health of the community.

The funding is possible thanks to gifts from donors designated for specific projects or given for unrestricted use, such as the Augusta Health Patient Care Fund. The Augusta Health Foundation Board of Directors awards the grants based on the review and recommendation of the Foundation's Grant Committee.

The following are just a few examples of the departments and initiatives awarded grants from the Foundation:

- **\$24,000:** Provided the forensic department with technology and equipment to modernize the way photos are taken, stored, and transferred to law enforcement and legal entities while maintaining patient privacy.
- **\$20,000:** Supplied medical equipment, including blood pressure cuffs, scales, pulse oximeter and pillboxes for 315 low-income, underinsured or uninsured heart failure patients to help them take control of their health.
- **\$13,164:** Provided child-sized exercise equipment for a youth fitness area in the Augusta Health Fitness Center.
- **\$5,500:** Provided training for the director of throughput and staffing, which focuses on delivering the right care in the right setting at the right time. The goal is to prevent delays in treatment, optimize patient care and flow, reduce risk of potential harm to patients and lessen the burden on healthcare clinicians.
- **\$5,500:** Provided funding for 15 nurses in the emergency department to improve the assessment, care and survival rate of trauma patients by attending the Trauma Nursing Core Course and receiving certification.
- **\$5,150:** Provide funding for five students to attend the new Augusta Health Certified Nursing Assistant program offered in partnership with the Valley Career and Technical Center.
- **\$4,950:** Provided a 3M Clean Trace system to help with cleaning and sterilization processes for endoscopy by controlling and preventing infections.
- **\$3,000:** Provided non-pharmacological pain therapy and personal comfort options for Augusta Health patients, reducing the number of pain medication prescriptions needed at discharge.
- **\$2,648:** Supplied glucometers and glucose testing supplies for patients in need with diabetes.
- **\$2,399:** Provided training for the improvement of patient flow, service and operations in the emergency department.
- **\$1,348:** Supplied iPads for interpreter services for deaf or hard-of-hearing patients.
- **\$1,000:** Supported the music therapy program by providing an outlet for patients at Crossroads Mental Health unit.



VICKIE TAYLOR, DNP, CNOR, NE-BC
Assistant Chief Nursing Officer



SHELLEY PAYNE, CTRS
Recreation Therapy Supervisor



TRACY SANSSOSSIO, MSN-IPC, RN, CIC
Infection Control Practitioner

CNA TRAINING PROGRAM

“I am grateful to the AH Foundation for their support of five Certified Nursing Assistant (CNA) trainees to build their knowledge and expertise within the nursing care team. Nursing is an amazing way to serve our community and make an impact in the lives of our patients. Every day one has the opportunity to make a difference.”

MUSIC THERAPY PROGRAM

“The music equipment purchased with the Foundation’s grant has benefited the patients on our Behavioral Health unit in many ways. It has given our patients a voice to express themselves when they otherwise were quiet and withdrawn. To hear the music they are creating, the words they are singing to express their feelings, and the laughter and smiles they are sharing together, reminds me each time how important music is in our daily lives.”

SYSTEM TO CONTROL AND PREVENT INFECTIONS

“Patient safety is our number one priority. The ability to have a quick, effective environmental monitoring program helps to ensure the sanitary condition of our organizational environment. The system creates an extra layer of safety by helping us quickly identify high risk areas that require additional attention so we can correct the issue before the harm reaches our patients. Because the 3M Clean Trace process is so fast, we are able to provide real time feedback to team members.”

Philanthropic Priorities

The Augusta Health Foundation is pleased to share our Philanthropic Priorities with the community.

Prescription Medication for Uninsured

With a grant from the Virginia Health Care Foundation, Augusta Health established its Medication Assistance Program (MAP) in 2015 to provide prescription medications to the un- and underinsured in our region. In 2019, Augusta Health's MAP provided more than \$5 million in brand-name prescription drugs to those in need. This program provides maintenance medications for patients with chronic diseases such as diabetes, hypertension and COPD. The reality of a six week wait from time of ordering to time of arrival from the drug manufacturer is a certain detriment to these patients.

A new Prescription Medication program is needed to support individuals who cannot afford their medications and who need lifesaving medications to "bridge the gap" during the six-week waiting period.

In 2019, Augusta Health provided more than \$41,970 in bridge medications to these individuals and a significant increase is expected in 2020 and 2021, due to the closing of the Augusta Medical Clinic.

Philanthropic Need: \$100,000 annually



Prayer and Meditation Room

Prayer, contemplation, spiritual connection and a place for solitude are often sought out by patients, visitors and family members during difficult times. Taking care of others can also be stressful. Augusta Health caregivers and team members at times need a place of peaceful solitude to decompress, meditate or rest following a traumatic patient event or death. In many hospitals, a Meditation Room provides that quiet place for reflection and prayer.

Philanthropic support is needed to repair and renovate the existing Chapel located on the second floor of the main hospital, near the information desk. A new Prayer and Meditation Room would provide a place of rest and solace for those who need spiritual care or contemplation.

Philanthropic Need: \$100,000 for complete renovation and furnishings



Diabetes & Endocrinology Center

Augusta Health is expanding its diabetes and endocrinology practice and creating a new Diabetes & Endocrinology Center on its main campus. The new Center will include more clinical space for the care and treatment of patients and the addition of new providers joining our expert team of endocrinologists.

Patients with diabetes and endocrine disorders will be seen at the new Center, including those with thyroid disorders, metabolic syndrome, pituitary diseases, Type 1 and Type 2 diabetes. Individual education and support are critical success factors for many with diabetes. Certified dietitians will provide diabetes education and prevention services and create a one-stop-shop

experience for patients. Our Diabetes and Endocrine Center team includes board-certified endocrinologists, Certified Nurse Practitioners and registered dietitians.

The new Center will include:

- Comprehensive care and treatment options for patients with diabetes
- Eleven exam rooms
- Two treatment rooms
- Diabetes Educators located on-site
- Expanded consultation offices and diabetes education space

Philanthropic Need: \$100,000

Comprehensive Breast Center

Women from across the region count on Augusta Health's Women's Imaging Center for annual testing, care and treatment. A 13,000 square foot Breast Health Center with advanced technology and diagnostic testing will be located in the new Outpatient Pavilion, adjacent to the main hospital's Heart & Vascular Center.

The new Center has been designed with women in mind. It will offer the most advanced technology in a relaxing "spa-like" environment. Augusta Health's dedicated team of board certified mammography radiologists, registered technologists and team members will ensure comfort and comprehensive care throughout the visit.

The new state-of-the-art facility will include:

- Four mammography rooms, with another room included for future expansion
- One Dexascan room, with another room included for future expansion
- One stereotactic biopsy room
- Three ultrasound rooms
- Four exam rooms

Philanthropic Need:

\$1,000,000 Breast Health Center naming opportunity; other gifts of \$10,000 provide additional naming opportunities.



Professional Development Fund for Caregivers

Expanding professional development opportunities for nurses and other skilled caregivers is critical to Augusta Health's mission of providing access to excellent care. As treatment modalities change and new training is needed for new or seasoned clinical team members, the Augusta Health Foundation has been an essential source of funding for training and professional development activities.

In the first half of 2020, more than \$50,000 was provided to support clinician and caregiver training and professional development to improve care provided to our community.

Examples of Augusta Health's clinical training and professional development activities:

- Certified Nursing Assistant on-campus program
- Registered Cardiovascular Specialty training
- Tobacco Treatment Specialist training
- Physician & Caregiver Resilience training
- Nursing Specialty Certification Preparatory Courses

Philanthropic Need: \$100,000

Telehealth

In this age of technological ease and convenience, patients want to see or talk with their physician or provider from their home, office or while on vacation. Virtual visits, telemedicine and other technology-supported care and treatment modalities are becoming an industry standard for health systems, providers and patients.

There is increasing demand for remote communications technologies in our particular region. Factors for this growing demand include transportation challenges, time constraints visiting multiple specialists across a large, rural footprint and an aging population with chronic health issues.

Augusta Health had already made telehealth capabilities a priority with coordination and ease of access to care and treatment serving as a strategic focus. With the advent

of COVID-19, telehealth capabilities were put into place quickly to ensure that patients in need of care could be seen and treated, while maintaining patient privacy and HIPAA compliance.



Examples of telehealth include:

- Patient to physician virtual visits for routine appointments
- Physician to physician consultations to treat a patient with multiple health issues
- Patient to multiple physicians for the comprehensive treatment of complex disorders.

Philanthropic Need: \$500,000



Village Commons at Augusta Health

This park setting will become a haven for anyone who visits Augusta Health. For patients and their families, it will be a safe space to reflect upon the challenges they may be facing. Augusta Health employees will find a quiet place to recharge while connecting with colleagues as they go about their daily tasks on campus. For caregivers and

our community at large, this space will provide a relaxing environment—offering benches and pathways throughout a 14,000 square-foot area—that showcases the tranquil beauty of the Shenandoah Valley.

Philanthropic Need: \$250,000



Augusta Health Farm House

Located behind the Augusta Community Care Building (ACC) is a 1.25 acre farm that will provide more than 45,000 pounds of fresh produce in 2020. The AMI Farm at Augusta Health was established on Augusta Health's campus in 2018, and has provides vegetables and fruits for use in patient meals, food boxes for community neighbors who are food insecure, Augusta Health's Food Farmacy and diabetes prevention program, cooking demonstrations, and at the weekly Farmer's Market.

A circa 1910 farmhouse is located near the farm and is in disrepair. The building was purchased by the Augusta Health Board of Directors as part of the original parcel of land secured for the new Augusta Medical Center in 1988. This space offers a unique opportunity to provide a realistic farm to table experience only steps away from where fresh produce is grown and harvested.

Philanthropic funds are needed to renovate the farmhouse to include:

- Two classroom space for nutrition education;
- A fully-equipped demonstration kitchen for teaching fresh food preparations; and
- Farm staff work offices.

Philanthropic Need: \$250,000 for complete renovation



ONE HUNDRED PERCENT — *that's exactly how much of your generous gift will go directly to the programs and initiatives that you support through the Augusta Health Foundation. While most not for profit organizations need significant portions of your gift to provide for administrative expenses — we're different. Thanks to our partnership with Augusta Health and their commitment to fund the operating expenses of the Foundation, your gift can now have maximum and lasting impact on the healthcare of our patients.*



PO Box 1000 | Fishersville, VA 22939
540-332-5174 | ahfoundation@augustahealth.com
www.augustahealth.com/foundation



Thank You for



Few of us will forget the second week of March, when COVID-19 changed life as we know it and brought communities across the nation to a grinding halt. As the reality of the virus descended on our region, many in our community extended a helping hand to uplift our team members.

The people of Staunton, Augusta County, Waynesboro, and other local regions expressed their appreciation for our team members in so many ways, both large and small, leaving a meaningful and lasting impression on us all. Every gift of personal protective equipment (PPE), hand sanitizer, meals and other expressions of support was a message of care and compassion.

The following individuals, organizations and businesses supported our health care heroes in a very tangible way while others lent their kind words, encouragement and prayers. Our team members are grateful and touched by this outpouring of support.

COVID-19 PREPAREDNESS SUPPORTERS

ORGANIZATIONS

AccuReg
 AccuTEC Blades, Inc.
 Advanced Auto Parts
 Allegheny Mountain Institute
 The Alteration Shop
 American Shakespeare Center
 AMN Healthcare
 Arby's - Stuarts Draft
 Arby's - Waynesboro
 Ashley Orthodontics
 Augusta County Public Library
 Augusta County Service Authority
 Augusta Dental
 Barton Malow Construction
 Blue Ridge Community College
 Brethren Disaster Ministries
 Brightview Baldwin Park
 Builders FirstSource
 Cadence Inc.
 Caked Up Charlottesville
 Calvary United Methodist Church, Stuarts Draft
 Canteen Vending Services
 Central United Methodist Church, Staunton
 Charlie Obaugh Chevrolet Buick GMC
 Chik-fil-A
 Church on the Hill
 Clif Bar & Company
 Coca-Cola Bottling Co. Consolidated
 Commonwealth Pizza
 Converge Local
 Covenant Presbyterian Church, Staunton
 Danone
 Denise Ramey Team, Long and Foster
 Domino's Pizza
 Dunkin Donuts Staunton #340875
 DuPont Community Credit Union
 Essentially Zen Shop
 Eye One
 First Bank & Trust Company
 First Baptist Church, Waynesboro
 Fishburne Military School
 G & G Cleaning, LLC
 Gateway Cafe
 Good Shepherd Anglican Church
 Greenmonte Fellowship
 H & R Contractors, Inc.
 Harbor Freight Tools
 Harrisonburg First Church of the Nazarene
 HealthSCOPE Benefits, Inc.
 Hershey Chocolate of Virginia
 The Hershey Company
 Hollister Incorporated
 Home Depot
 Hotel 24 South
 Iguana Azul Mexican Restaurant
 James Madison University
 Jersey Mike's Subs
 Kjellstrom-Lee Construction
 Kroger Co.
 Legends Outdoors
 Little Caesar's
 Loch Willow Presbyterian Church
 Lowe's Home Improvement
 Lowe's of Staunton
 Martin's Food of Harrisonburg
 Martin's Food of Staunton
 Martin's Foods of Waynesboro
 Miller's Bake Shoppe
 Moose Lodge #1309
 Murphy Deming College of Health Sciences
 Newtown Bakery
 Old Providence ARP Church
 Operation SOS
 Oracle Corporation
 OxiFresh Carpet Cleaning
 Papa John's Pizza
 Pilgrim Christian Fellowship
 Plaza Azteca
 Ragged Branch Distillery
 Responsible House
 SalonCentric
 Scotto's Italian Restaurant
 Semco Services, Inc.
 Sheetz of Staunton
 Silverback Distillery
 Song's Sewing Shop
 Specialty Blades, Inc.
 Spring Hill ECO Presbyterian Church
 St. John the Evangelist Catholic Church Sewing Circle, Waynesboro
 Starbuck's
 Staunton Lodge B.P.O. Elks #351
 Staunton Rotary Club
 Strite's Donuts
 Sweet Bliss Bakery
 Target
 Thai Staunton
 Tony's Pizza & Italian Restaurant
 Tropical Smoothie Cafe
 Valley Pike Farm Market
 VCOM Students of Augusta Health
 Verona Moose Lodge #2172
 Verona United Methodist Church
 Virginia Department of Health
 Virginia Department of Transportation, Staunton
 Virginia Hospital & Healthcare Association
 Virginia School for the Deaf and the Blind
 Walmart Neighborhood Market
 Waynesboro Elks Lodge BPOE 2270
 Waynesboro Public Schools
 Weaver Insurance & Financial Advisors
 Westwood Animal Hospital
 Wild & Free, LLC Holistic Day Spa
 Wilson Memorial High School
 Windgrove Community
 Winfield Ministries Inc.
 Wintergreen Resort
 Zeus Digital Theaters



INDIVIDUALS

Eloise K. Adams
 Sheila Ahmadi
 Anne Marie Ajemian
 William F. Aldridge
 Emma Allen
 Carol Austin
 John C. Avellone
 Joan T. Balsler
 Emily Bardeen
 Michael A. Barrett
 Michael Bateman
 Margaret Battey
 Megan Bayonet
 Gregory S. Bednarz
 Ainsley & Audrey Bloomfield
 Judy Eavers Bobsin
 Raymond C. Bodley
 Kennon Bowen
 Irene Bradley
 Alexis Brewer
 Barbara Ann Brothers
 Faith Bryant
 Ann Bucklin
 Grant Burkholder
 Malcolm E. Campbell
 Cass Cannon
 Frank A. Carey
 Thomas Carr
 John Charles Clark
 Bettie H. Compton
 Carlene Conner-Kueck
 Sylvia Crawford
 Robin G. Crowder
 John B. Davis
 Donna Davis
 Christine Dee
 Kim W. Diehl
 Bruce R. Dorries
 Mary W. Dove
 Bona Dresch
 Patricia Duckworth
 Kathryn Dunay
 Gwenlyn Eavers
 Rebecca Evans
 John Falcon
 Rick Fauerbach
 Helen K. Fitzgerald
 Susanna Forren
 Charles E. Frankfort
 Barbara L. Franklin
 Mark Frazier
 Emma and Amy Fulk
 Teresa S. Garber
 Douglas W. Gerni
 Marney Gibbs
 John Girard
 Margaret Grady
 Reed Enfield Graves
 Sandra Greene
 Emily Greene
 Annette Gregory

Kate Guenther
 Kenneth E. Hale
 Andrea Witt Haley
 Bruce Hankee
 Allan L. Hardy
 Laura L. Harris
 Stephen R. Hart
 Brian J Harvick
 Susan F. Hastings
 Brett Hayes
 W. J. Haynie
 Christopher C. Heck
 Odile Heisel
 Debby Henry
 Angela Hibshman
 Diane Higgins
 Lynn Hanger Hill
 Patrick Hinely
 Homer L. Hite
 Susan L. Holland
 Terry Holmes
 Colby Howell
 Mike Hull
 Mary L. Huppuch
 Laurie Jakoboski
 Yvonne M. Johns
 Andrew John Johnson
 Frank and Cookie Johnson
 Bob Jones
 Susan K. Jones
 Casey Rene Just
 Cheryl Kent
 Walter Kersch
 Ophie A. Kier
 Ralph Kirtland
 Lisa Klein
 Leslie L. Knight
 Debbie J. Knight
 Geraldine D. Kruger
 Joanne D. Lam
 Jennifer LaRosa
 Joan Leake
 David A. Ley
 Barbara Linzey
 Carl M. Locken
 Stephen A. Lockridge
 Claire M. Love
 Fran Ludlum
 C MacLaine
 Ed Mair
 Donna W. Markey
 Kanise Marshall
 Bill Martin
 David E Matheney
 Sara J. Mayer
 Marguerite R. McDonald
 Olympia D. McDonaldson
 Frank Joseph McDonough
 Anne Patricia McGovern
 Alice P. McLeod
 Ron McManamay
 Jennifer McNee
 Nicole Meadows

Rita Meek
 Maryanne Meisenheimer
 Irene Miller
 Denise Montgomery
 Beverly S. Moran
 Kathy Morgan
 Albert W. Morriss
 Cerissa Morrisette
 Sarah S. Mueller
 James Nathe
 Ann C Oakes
 Thomas H. Oneill
 Sarah S. Paiste
 Linda T. Peery
 Barbara Phillips
 Linda Lee Phillips
 Nevin D. Pilson
 Rebecca L. Rader
 Joseph L. Ranzini
 Deanna Reese
 Cathy Rexrode
 Margaret Ann Roark
 Crystal D. Robertson
 Virginia Robinette
 Cheryl Rosberg
 Kathleen Rottenborn
 Ellen Goldstein Schorsch
 Norman H. Scott
 Judy Scotto
 William W. Sedr
 Donald Sharretts
 Susan Shiflet
 Catherine Brown Shipe
 Jenny Showalter
 Libby Sieber
 Betty Aker Snyder
 Emmeline K. Soyars
 Martha B. Sparks
 Doug Stegura
 Ronald L. Stewart
 Robyn & Brandan Summerfield
 Eva Talbert
 Patricia A. Tichenor
 Jan Tishok
 Jan Tobias
 Tom Tourje
 Annmarie Trost
 Tim Troxler
 Kristin Turza
 Katherine W. Tyree
 Patricia Gail Ventura
 Shirley W. Webster
 Hugh E. Westfall
 Anne C. Wick
 Linwood G. Wilkes
 Carol Williams
 Bonnie Wilmer
 Darlene Wiseman
 Stephen Wittenberg
 Catherine W. Yeatts
 Bob Young

COVID-19 COMMUNITY RESPONSE



PPE (GOWNS, GOGGLES, GLOVES)
7,800+



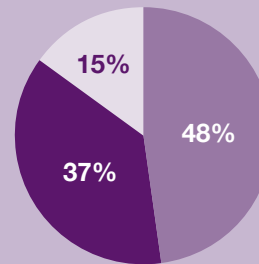
MASKS
8,800+



HAND SANITIZER
650+ bottles



PIZZA
6,000+ slices



COVID RELATED
 GIFT-IN-KIND DONATIONS
 valued at over \$103,000

■ **INDIVIDUALS**
 ■ **BUSINESSES**
 ■ **CHURCHES/SCHOOL/SERVICE**



CASH RECEIVED
 for COVID-19 response,
 emergency preparedness, and
 the Employee Emergency Fund
\$91,363

Blessings From Above

When you think back to what you were doing at age 17, it probably didn't involve piloting an airplane. But for T.J. Kim, the outbreak of a deadly virus and an urgent need for protection from it inspired him to do something few people his age will ever do.

In early July, 17-year-old T.J. got into the cockpit of a small plane with his flight instructor, and flew to Eagle's Nest Airport in Waynesboro with over 4,500 pieces of Personal Protective Equipment (PPE) for our healthcare heroes.

T.J. and his father, Thomas Kim, were carrying out Operation Supplies OVER Skies (SOS), a philanthropic mission to bring much-needed PPE to rural hospitals located along the I-81 corridor. The Kims, who live in Northern Virginia, gathered PPE from locations in their region and delivered them to the Shenandoah Valley. They brought an assortment of important protective equipment, including gloves, medical head covers, surgical masks, respirator masks, gowns, hand sanitizer bottles, goggles, face shields and concentrated disinfectant wipes.

At the airport, President & CEO, Mary Mannix, ICU nurse Jessie Ferguson RN, Foundation and Marketing team members, and local newspaper and television reporters greeted T.J.

"My favorite experience would have to be the interactions I've had with the hospital workers at the airport when I landed. It's amazing to hear their stories, to receive their appreciation, and it makes me feel proud and humbled when they talk about how much my Operation SOS supplies will help their communities," T.J. said. "I was especially glad to meet Ms. Mannix. That was a first for me to have the CEO greet me personally."

T.J. has received national and global recognition and a commendation from the President at a White House reception for his efforts. He plans to enter the Naval Academy and dreams of becoming a Navy fighter pilot. Thanks to his vision for Operation SOS, he can now add community partner and philanthropist to his resume. We are deeply grateful to the Kim family for their generosity.



Who Says You Can't Go Home?

When Lisa Hizer left her job at Augusta Health early in 2020 to co-manage G&G Cleaning, her family's commercial cleaning business, she never forgot the people she left behind.

Lisa had a six year career in the health system, first as the assistant director of environmental services and later as an employee in nutrition services. When the pandemic hit our area, Lisa's thoughts immediately went to her former colleagues at Augusta Health, and she wanted to help.

Lisa and her husband, Bobby, who also manages G&G Cleaning, had purchased a special machine that uses health-grade chemicals to fog and sterilize a local surgical supply plant in the evenings. They quickly realized their new tool

could help Augusta Health sterilize the medical transport vans, home health and hospice vehicles, and other locations difficult to clean and disinfect.

The couple generously donated their cleaning services, and Lisa provided all the labor. Simply knowing the health system's vehicles are disinfected and sanitized brought a great deal of comfort to our care teams during this unprecedented health crisis.

"Once you are a part of the Augusta Health family, you are always a part of the family," said Tracy Sansossio, RN, Infection Control Practitioner. "Lisa's willingness to donate this service to ensure our teams are safe underscores her love for our organization and our community."

CHARITABLE GIFT ANNUITIES



Fixed Payments for Life

Do you want to increase your annual income and receive a tax deduction, all while ensuring the future of accessible healthcare for your family, neighbors and community? An **Augusta Health Foundation charitable gift annuity (CGA)** is a simple contract between you and Augusta Health that achieves just that. It's an easy and smart way to begin receiving income at an attractive fixed rate of return either immediately or deferred until a future time.

ABC's of CGA's

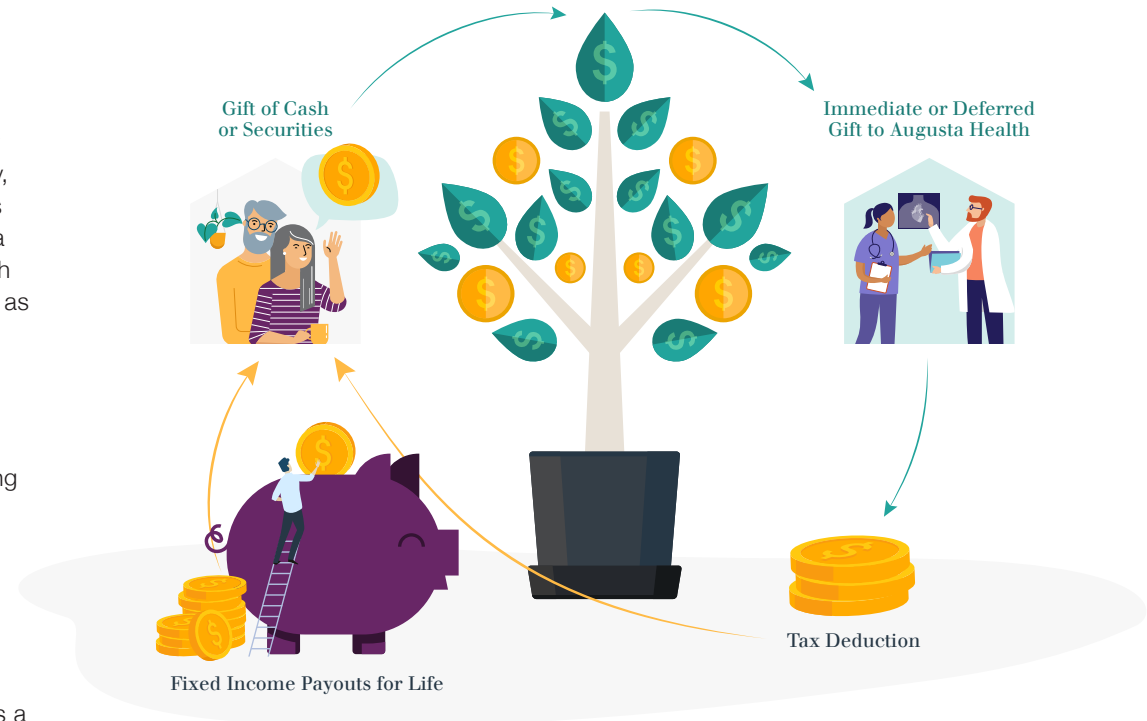
Once you make an irrevocable gift to the Augusta Health Foundation of cash or stocks, you will receive fixed payments for the remainder of your life. If you choose to name a co-beneficiary, they, too, will receive fixed payment for life. After the beneficiary's death, the remaining amount of the original gift supports Augusta Health's mission. When you establish a charitable gift annuity with the Augusta Health Foundation, you will be immediately honored as a member of the Cornerstone Legacy Society!

The Benefit to You?

As a Cornerstone Legacy Society member, you enjoy the following benefits:

- Increase your annual income,
- Enjoy an income tax deduction (if itemizing),
- Receive tax-advantaged income for life,
- Reduce your taxable estate,
- Help support the mission of Augusta Health, and,
- Be recognized and acknowledged for your generosity as a member of the Augusta Health Foundation's Cornerstone Legacy Society.

Charitable gift annuities provide unique benefits to philanthropists supporting Augusta Health. Unlike an outright gift, donating assets through a charitable gift annuity results in lifetime payments to the donor.



"I have been a volunteer for Augusta Health Hospice of the Shenandoah for the past 13+ years, and I am very passionate about the program. That is where my CGA residual will go. It is a win-win situation for me. It is additional income for me while I'm living and continued support to Augusta Health Hospice after I die."

—DAVE MATHENEY, WAYNESBORO

OUR 2019 DONORS

The Augusta Health Foundation Board of Directors extends its heartfelt thanks to the following individuals, businesses, foundations, and organizations whose generosity provided care and comfort to Augusta Health patients in calendar year 2019.

\$250,000-\$999,999

1994 SOCIETY

Estate of Jean Holbert Kent

\$50,000-\$99,999

CIRCLE OF HOPE

Sodexo

Virginia Health Care Foundation

\$25,000-\$49,999

PARTNERS IN HEALTH

Richard S. Reynolds Foundation

\$10,000-\$24,999

COMMUNITY LEADERS

Anonymous

American Cancer Society, Inc.

Dr. and Mrs. Charles F. Andersen

Emily and Bill Branscome

NTELOS Wireless Foundation

Dixie Gas & Oil Corporation

Dixon Hughes Goodman, LLP

Duke Cancer Network

Houff Charitable Foundation

J. Scott Just, MD and Casey R. Just

Lumos Networks/Segra

Mary N. Mannix and Frank A. Carey

Mr. David E. Matheney, Jr.

Drs. David and Heather Morgan

Russell Investments

\$5,000-\$9,999

PRESIDENT'S CIRCLE – GOLD

All Star Recruiting

Atlantic Union

Augusta Emergency Physicians, LTD

Auxiliary of Augusta Health

Blue Ridge Radiologists, Inc.

Mr. Aaron M. Blum

Mike and Debi Canfield

Carr Family Foundation

William and Karen Clark

Columbia Gas of Virginia

Dr. Bob and Sharon Driscoll

DuPont Community Credit Union

F&M Bank

First Bank & Trust Company

Hancock Daniel

Homer L. Hite and Joyce C. Hite

Mr. and Mrs. John Katsianis

Ladies Auxiliary to Elliot's Knob Aerie No. 680

MedCom Solutions, Inc.

Tamara and James Ridenour

Carl and Cheryl Rosberg

State Collection Service, Inc.

SunTrust Foundation

Mr. and Mrs. Paul P. Varnes

Warbird Consulting Partners, LLC

Waystar Revenue Cycle Technology

The Woman's Center OB-GYN Associates

\$1,000-\$4,999

PRESIDENT'S CIRCLE – SILVER

Anonymous

Dr. and Mrs. Halvor G. and Peggy M. Aaslestad

Mr. Ronald Adcock

Dr. Miguel G. Aguinaga and Ms. Patricia E. Taylor

Arbor Cycle Landscape, LLC

Ms. Nancy C. Armstrong

Augusta Cleaners & Formals

Augusta Staunton VFW Post 2216

Ms. Sylvia E. Bailey

Mrs. Bonnie L. Barlow

Ms. Laurie Berman

Dr. and Mrs. Clark B. Bernard

Blue Ridge Oral & Maxillofacial Surgery

Harry and Sarah Boney

Mr. and Mrs. John W. Boswell, Jr.

Bottomline Software

Mr. and Mrs. John P. Bowers

Dr. and Mrs. M. Todd Brandt

Mr. and Mrs. Wayne Britton

Debra Stiles Callison and James W. Callison, III

Mr. and Mrs. Joe Chadwell

Cirius Group, Inc.

Mr. and Mrs. Richard A. Clark

Mr. Jason Clarke and Dr. Sonja M. Musser

Comcast Spotlight

Dr. Lawrence Comerford

Compass Group USA, Inc.

Constellation NewEnergy, Inc.

Mr. and Mrs. Scott Crabtree

Robin and Cathy Crowder

Dr. Sandra M. Curry

Mr. Joshua Dakon

Dr. and Mrs. William D. Davidson

Mr. and Mrs. John A. Davis, Jr.

Ms. Patricia Devitt

Dr. and Mrs. William J. Doherty

Dropbox

ED Financial Services

Rich Evans and Lynn Davis

Ms. Crystal Farmer

First Bank One

Dr. David and Diane Fosnocht

Dr. Pamela R. Fox and Mr. Dan Layman

The Honorable and Mrs. Humes J. Franklin

Franklin Street Marketing

Mr. John Girard

Mr. and Mrs. Herbert L. Godschalk III

Ms. Katherine A. Gray

Dr. T. Glen and Lisa Gray

Ms. Andrea W. Haley

Dr. Leticia E. Hardy

Nancy C. Harig

Mr. James Rodgers and Mrs. Sarah Hash-Rodgers

HealthSCOPE Benefits, Inc.

Kathleen and Bill Heatwole

Christopher and Monica Heck

Daniel and Janne Heifetz

Heritage Hospitality Management, Inc.

Hershey Creamery Company

Mrs. Lesley K. Hock

Hollister Incorporated

John and Cynthia Hoover

Jackson & Coker

Dr. and Mrs. Frank Johnson

Mr. and Mrs. D. Scott Jones

Ms. Amy Laser Kiger

Mr. and Mrs. Robert A. Kirby

Jacob and Deborah Kleinschuster

Robert and Nancy Kyler

Rick and Laurie Landes

Mark and Jennifer LaRosa

Mr. and Mrs. Jacques L'Heureux

Mr. and Mrs. John J. Lubkowski

Mr. and Mrs. John E. Mack, PA

Dr. and Mrs. Preston C. Manning, Jr.

Dr. and Mrs. Robert S. Markley

John and Cathy Matherly

McDonough Toyota & Scion

Ms. Linda M. McEnery

Medical Data Systems

Mediserve, Inc.

Cheri and Phil Moran

MoreDirect/Connection

Whit (Albert W.) and Jane Morris

Dr. and Mrs. James Nathe

Daniel and Crystal O'Connor

Ms. Gray Ogden Ibbeken

Mr. and Mrs. Dillwyn Paiste

Dr. and Mrs. Robert Partridge

Dr. James Perkins

Mr. Edward L. Pickett

Dr. Julie and Mr. Stephen Plumbley

Ms. Carol H. Poulson

Progressive Management Systems

Queen City Creative

Quest Diagnostics

Tami and Mark Radecke

Dr. and Mrs. Joseph L. Ranzini

Dr. and Mrs. Kelvin Raybon

RCM&D

Receivables Management Consultants Inc.

Doug and Arona Richard

Riddleberger Brothers, Inc.

Ms. Margaret A. Roark

RSC Real Estate Corporation

Victor and Karen Santos

Dr. Kristen L. Savola and Dr. George Verghese

Dick and Judy Schilling

Art and Jamie Schlappi

Bob and Liz Schreiber

Jeff and Lisa Schwenk

Shenandoah Valley Electric Cooperative

Shentel

Ms. Mandi M. Smith

Dr. Kenneth Sternberg and Ms. Angelica Peña

Dr. and Mrs. Brian Stisser

Ms. Win Suen

Sun Print Management

SunTrust

Mr. Sidney M. Sussan

Dr. Angela Sutton and Mr. Matthew Sutton

The Depot Grille

The News Leader

TimberlakeSmith, Attorneys At Law

Tuesday Club of Augusta County

Mrs. Julie P. Tyree

Valley Group, Inc.

Valley Vital Care

Mr. and Mrs. Gary Wade

Westhills Ltd. REALTORS

Mr. and Mrs. Larry Wood

Zeus Digital Theaters

\$500-\$999

Anonymous
 Ms. Kathleen G. Adams
 Augusta Health Care Credit Union
 Mr. and Mrs. Daniel R. Baker
 Mr. and Mrs. Judd Bankert
 Ms. Sharon W. Bartley
 Adam and Philippa Belsches
 Ms. Amanda Bennington
 Blue Ridge Pathologists PC
 Dr. A. Richard Bolstein and Ms. Sharon Adams
 Drs. Michelle and William Brooks
 Ms. Veronica D. Bryant
 Ms. Brooke C. Campbell
 Dr. and Mrs. Charles T. Carter
 Ms. Sherri Carter
 Mr. Steven T. Cashatt
 Ms. Annette Chandler
 Mr. Hunter J. Choate
 Cleverley & Associates
 Ms. Janet M. Clifton
 Mr. and Mrs. H.C. Stuart Cochran
 Jeff and Penny Cooper
 Nina and Stuart Crow
 Ms. Crystal B. Culpin
 Ms. Lori K. Davis
 Christopher and Bethany Delk
 Ronald W. Denney and Kathryn C. Denney
 Dental Health Associates
 Mr. William R. Dod II
 Mrs. Bonnie R. Dodson
 Mr. Leonard J. Doran
 Ms. Cathi Earhart
 Elkay, LLC
 Mr. and Mrs. Robert B. Euler
 Dr. Barbara Fenton and Dr. Charles Thornsward
 First Citizens Bank
 Ms. Dana M. Flanders
 Mr. and Mrs. Geoffrey Fosdick
 Ms. Kimberley W. Galloway
 Mr. and Mrs. Richard R. Glenn
 Mr. and Mrs. Doug W. Gordon
 Mr. and Mrs. David R. Graham
 Dr. William L. Harrell and Dr. Tom Arbaugh
 Hess Financial LLC
 Mr. and Mrs. Gary Hodges
 Ms. Helen L. Hogshead
 Holtzman Oil Corporation

Mr. and Mrs. Gary D. Hougan
 Stephen and Sara Howlett
 Mr. Lee R. Huffer, Jr.
 Ms. Donna L. Hurst
 Mr. Isaac Izzillo
 Ms. Gena Johnson
 Mr. Jesse A. Johnson
 Dr. Reshma Khetpal
 Mr. Ronald J. Kiser
 Ms. Theresa J. Layne
 Ms. Dawn L. Locklair
 Mr. Jeff Long and Ms. Karen J. Knemoller
 Lori's Gifts
 Ms. Charlotte Maiden
 Ms. Brenda S. Martin
 Mrs. Alice P. McLeod
 Ms. Tonya M. Meadows
 Janet O. and Alfred P. Meyer
 Mr. William J. Mooneyham
 Mr. and Mrs. Allen J. Murphy
 Mr. and Mrs. Angel Negron, Jr.
 Mr. Thomas Niemann
 Old Dominion Realty
 Mr. and Mrs. William Pannin
 Mr. Randall T. Perdue
 The Reverend and Mrs. John C. Peterson III
 Ms. Lee Anne P. Phillips
 Dillon Porter
 Mr. and Mrs. Deane F. Powers
 Mrs. Betty T. Pullin
 Ms. Dawn E. Randolph-Obie
 Ms. Jeanne Ravich
 Richard L.M. and Janeth B. Coleman Fidelity
 Charitable Fund
 Mr. and Mrs. Gary P. Roberson
 Adam and Carrie Rochman
 Rockingham Cooperative Corporate Office
 Mr. and Mrs. William S. Rodgers
 Jim and Celia Rutt
 Ms. Karen S. Sambrook
 Ms. Judy Scotto
 Mr. and Mrs. Gary L. Seek
 Mr. and Mrs. Thomas G. Sheets
 Robert and Barbara Sheffield
 Shenandoah University
 Ms. Jacqueline M. Sims
 Mr. John M. Smallwood
 Dr. John Snyder and Dr. Amanda G. Guedes
 Ms. Cynthia M. Solana

BY THE NUMBERS

* denotes deceased individual

Calendar Year 2019

LEADERSHIP GIVING

Augusta Health Board
100%
 PARTICIPATION

Augusta Health Foundation Board
100%
 PARTICIPATION

Augusta Health Executives
100%
 PARTICIPATION

35
 VOLUNTEERS
 ENGAGED

INVESTING IN OUR COMMUNITY



\$608,662
 Emergency Department



\$13,879
 Employee Emergency Fund



\$34,983
 Indigent Patient Care



\$125,390
 Cancer Services



\$21,747
 Grants and Scholarships

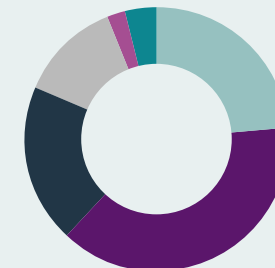


\$73,322
 Hospice Support



\$196,552
 Medication Assistance/ Prescription Relief

GIFTS RECEIVED



AUGUSTA HEALTH FOUNDATION
 January 1-December 31, 2019

- Breast Cancer Screening/ Support: **\$254,117**
- Educational Scholarships: **\$414,216**
- Hospice/Shenandoah House: **\$209,476**
- Patient Care: **\$133,590**
- Employee Emergency: **\$23,507**
- Cancer Services/Care (outside of breast cancer): **\$40,310**

In 2019, our **25th Anniversary Gala** event raised over **\$130,000** for the purchase of a new 3-D mammography machine.

Our first-ever **Cake Frost and Chili Cook-off** engaged our team members and helped raise over **\$75,000** for the Employee Emergency, Education and Patient Care Funds.

The **Women's Giving Circle**, established in 2017, added eight new members in 2019 and now has **33 members** total!

The **Grateful Patient program** raised over **\$20,000** in 2019 from patients who were thankful for the care they received at Augusta Health. **Thirty-seven caregivers and team members were honored by patients for their compassionate care.** Donations were designated for a variety of funds, including Patient Care, Hospice, Cancer Services, Heart and Vascular and the Emergency Department.

Women's Giving Circle



A philanthropic spirit is a common thread that binds a close-knit group of women in the Augusta Health Foundation Women's Giving Circle.

Three times a year, Circle members learn from Augusta Health experts about an area of the health system that piques their interest. Through a three-year pledge of \$3,000, these generous women provide for new and expanded patient care programs, such as the 3-D mammography unit with biopsy capabilities. While making generous investments in their community's healthcare is their primary goal, food and fellowship make the learning experience all the more enjoyable.

At their May meeting, Women's Giving Circle members gathered under a tent outside the Heart and Vascular Center to enjoy a personal, pre-plated array of hors d'oeuvres and beverages. Afterward, WGC members participated in a presentation about the AMI Farm at Augusta Health by Krystal Moyers, Director of Community Outreach, and Grayson Shelor, Allegheny Mountain Institute Outreach Coordinator. The evening was enjoyed by all even while practicing social distancing and wearing face coverings.

2019 Women's Giving Circle Members

Nancy Armstrong*
 Sylvia Bailey
 Bonnie Barlow*
 Kristen Brandt*
 Evelyn Britton*
 Debra Callison*
 Debra Canfield
 Beth Chadwell
 Doris Clark*
 Sandy Curry
 Kathy Denney*
 Patricia Devitt*
 Cindy Didawick
 Sharon Driscoll*
 Dana Flanders
 Barbara Franklin*
 Nancy Harig*
 Joyce Hite
 Lesley Hock*
 Mary Mannix*
 Linda McEnery
 Sarah Paiste*
 Jeanne Partridge*
 Tami Radecke*
 Tina Raybon*
 Arona Richard*
 Margaret Roark
 Gloria Rodgers
 Kristen Savola
 Phyllis Scroggham*
 Mandi M. Smith
 Jean Wade*
 Roberta Wood

* FOUNDING MEMBER

Ms. Martha Sorensen
 Mr. William F. Sowers
 Starbucks Coffee Company
 Ms. Kimberly Staton
 Staunton Rotary Club
 Staunton Waynesboro Augusta Tennis (SWAT)
 Mr. and Mrs. Dennis L. Stepp
 Mrs. Charlotte L. Stover
 Mrs. Darlene A. Strickler
 Dr. Daniel and Caroline Sullivan
 Ms. Denise M. Temple
 Harman Construction Charitable Fund
 The News Virginian
 Mrs. Barbara P. Trumbo
 Susannah S. Via
 Mr. and Mrs. Wayne E. Waggy
 Dr. Andrew West
 Mrs. Judith W. Zdinak

\$100-\$499

Anonymous
 Mr. and Mrs. Michael G. Abbott
 Ms. Patricia R. Allen
 Mr. Stuart R. Allen
 Ms. Kim D. Almarode
 Mr. Thomas W. Altizer
 Mr. Clyde Anderson
 Mr. Dwayne G. Anderson
 Mrs. Elizabeth L. Anderson
 Ms. Judith C. Anderson
 Mr. William Anderson
 Antioch United Church of Christ
 Ms. Mary T. Arrowood
 Mr. and Mrs. Ronald Artz
 Augusta County Democrats
 Augusta Health Care, Inc.
 Augusta Mutual Insurance Co.
 Ms. Patricia S. Austin
 Dr. Gilmer Ayers and Ms. Diane Heaver
 Ms. Sara Baker
 Ms. Deanna Baldwin
 Mr. Phillip E. Balsley
 Mrs. Sharon K. Bares
 Ms. Francesca G. Barna
 Ms. Tina S. Bartley
 Ms. Eva T. Beach
 Ms. Deborah Beales
 Mr. and Mrs. Daniel L. Bearley
 Mr. and Mrs. Gregory S. Bednarz
 Mr. and Mrs. Leo W. Bennett
 Mr. and Mrs. Roy E. Bennington
 Ms. Beatrice F. Benson
 Ms. Hilda Bewall
 Mr. Anthony F. Bezok
 Mr. and Mrs. Charles P. Billbrey
 Ms. Stephanie R. Bishopriggs
 Ms. Susan Blackburn
 Mr. and Mrs. Montzere C. Blakey
 Mr. William B. Blakey, Jr.
 Mr. and Mrs. Stephen D. Blevins
 Blue Ridge Appraisal Co. LLC
 Ms. Diane Boller
 Mr. Michael E. Boren
 Mr. Kenton C. Bosserman
 Ms. Ramona Bosserman
 Mrs. Sandra Botkin
 Bruce and Nancy Bowman
 Bowman Family Dentistry, PLLC
 Ms. Christine Bradbury
 Ms. Kathy J. Bradley
 Ms. Lisa D. Bradley
 Mr. Brandon L. Bradshaw
 Ms. Helen E. Braunworth
 Ms. Chelsea G. Brooks
 Mr. and Mrs. Donald Brooks
 Ms. Kelley M. Brooks
 Mr. and Mrs. Robert S. Brooks
 Ms. Beth A. Brower
 Mr. and Mrs. Alexander L. Brown
 Ms. Deborah L. Brown
 Brown Insurance
 Mr. and Mrs. Paul Brown
 Ms. Sheila A. Brown
 Mrs. Faith L. Bryant
 Ms. Robyn N. Brydge
 Mr. and Mrs. Larry K. Buck
 Mr. Elwyn M. Bull, Jr.
 Mr. and Mrs. Richard Bump
 Mr. and Mrs. Joseph R. Burkholder
 Ms. Judy Burtner
 Dr. Floyd V. Burton
 Ms. Mary F. Byrld
 Ms. Lorraine W. Caldwell
 Mr. E. Edward Campbell
 Ms. Logan Campbell
 Ms. Margie L. Campbell
 Mr. and Mrs. Raider W. Campbell
 Ms. Sarah B. Campbell
 Cana Barn, Inc.
 Ms. Shannon K. Capriotti
 Mr. and Mrs. George J. Carney
 Mr. and Mrs. Gene Carpenter
 Ms. Morgan Carpenter
 Ms. Susanna W. Carter
 Mr. and Mrs. Thomas B. Carver, Sr.
 Ms. Rhiannon F. Cash
 Ms. Gretchen T. Cassell
 Centra Bedford Memorial Hospital Auxiliary
 Cerulli Associates
 Mr. Scot A. Chancy

David and Paula Chernoff
Mr. and Mrs. Charles F. Clark
Ms. Suzanne Clark
Classic Autobody Inc.
Mrs. Suzanne W. Click
Mrs. Dorothy A. Cochran
Mrs. Bobbi J. Coffey
Mr. and Mrs. James C. Coffey
Mr. and Mrs. Stephen L. Coffman, Jr.
Reverend and Mrs. Curtis P. Coffman
Geritol Gear Jammers Club
Ms. Sandra K. Coffman
Mr. and Mrs. Stephen L. Coffman
Ms. Sara Covich
Mrs. Mary Ruth Coleman
Dr. and Mrs. James S. Comar
Ms. Anna Corbin and Mr. Paul Bosak
Mrs. Brigitte Cowan
Mrs. Shirley P. Cox
Mr. Byron C. Crump
Mrs. Michelle R. Cupp
Mr. and Mrs. G. Raymond Curry
Mr. Harold R. Curry
Ms. Pamela Davies
Mr. and Mrs. Gayland R. Davis
Ms. Michele Davis
Mr. Nolan B. Davis
Ms. Tracy Davis
Mr. and Mrs. E. Hardy Dawkins
Ms. Lorrie M. and Duane A. Dean
Ms. Ronda L. Dearing
Degesch America Inc.
Mr. and Mrs. John P. Desmond
Mr. David W. Desper
Mr. and Mrs. Thomas E. Dewan
Ms. Teresa E. Dinges
Dr. Olimpia V. Dorries
Ms. Kristen S. Doughty
Ms. Gloria L. Dove
Mr. R. David Dove
Mrs. Charlotte N. Downing
Mr. Rodger A. Doyle
Mr. Ed Driskill
Mr. and Mrs. O. George Drummond
Ms. Jill R. Dudley
Mr. James E. Duncan
Mr. and Mrs. Bob Dunworth
Mr. Kenneth Earhart
Ms. Andrea Early
Mr. Ernest C. Echols
Ms. Tammy L. Eckert
Mrs. Kym Eedy
Ms. Megan Eggleston
Mrs. Barbara Einecker
Ms. Catherine M. Elder

Mr. and Mrs. Michael D. Elliott
Elliott's Knob F.O.E. Aerie 680
Ms. Dolly F. Ellis
Dr. and Ms. David G. Elmes
Mr. and Mrs. Kenneth L. Elmore
Ms. Sandy Engle and Mr. Jeffrey Rosenbach
Ms. Paula J. Erickson
Mr. and Mrs. Thomas C. Erskine
Preston M. Estep, MD
Ms. Jill C. Fairbanks
Karen and Charles Fairchilds
Mr. Gary Fang
Mr. Thomas P. Farkas
Mr. and Mrs. Louis A. Farmer
Mr. Edward Farrell
Mr. and Mrs. A. Thomas Fechtel
Ms. Jessica Ferguson
Ms. Inez A. Ferraris
Mrs. Rosalie Fessier
Mrs. Gail Finnegan
Ms. Ann C. Fisher
Fisher Auto Parts, Inc.
Ms. Grace C. Fisher
Mr. and Mrs. Richard O. Fitt
Ms. Lisa M. Fitzgerald
Ms. Sandra H. Flintom
Mr. Walter L. Flora
Ms. Mariann Flynn
Ms. Susanna Forren
Mr. and Mrs. Thomas K. Fortune
Mr. and Mrs. William A. Fosnocht
Ms. Anne Foster
Dr. and Mrs. Donald R. Fowler
Ms. Gail P. Fox
Ms. Linda R. Freed
Ms. Brigitte V. Fresco
Ms. Geneva Fridley
Mr. Daniel M. Friend
Mr. C. Wayne Frizzelle
Ms. Sabrina P. Fuller
Mrs. Ava P. Funk
Ms. Teresa S. Garber
Ms. Roberta L. Garrett
Mr. and Mrs. Gary W. Gearhart
Ms. Heidi B. Gentry
Ms. Sharon T. Gibson
Dr. James E. Gillespie
Dr. and Mrs. C. Buckley Gillock
Ms. Rene Glidden
Dr. Drew E. Gogjan
Mr. and Mrs. Gary D. Gourley
Mr. and Mrs. Charles E. Gowen
Mr. and Mrs. Lee W. Graber
Mrs. Violet F. Graber
Ms. June Graham

Mr. Daniel Grantham
Ms. Barb Graves
Mr. Reed E. Graves, Jr.
Ms. Debra A. Gray
Mr. and Mrs. Kenneth W. Gray
Greater Augusta Association of Realtors
Ms. Norma L. Greenleaf
Ms. Meagan L. Greenwood
Mr. Gary J. Griffin
Ms. Karen S. Griffin
Ms. Kira S. Griffin
Ms. Teri Griffith
Mrs. Bonnie C. Grimm
Ms. Amanda Guedes de Moraes
Mr. and Mrs. Andrew T. Guertler
Mr. Duncan Haggart
Mr. and Mrs. George R. Haines, Jr.
Mr. and Mrs. Kenneth L. Hall
Ms. Harriet E. Hanger
Ms. Michelle L. Hanger-Gee
Dr. and Mrs. William B. Hanna
Ms. Carol W. Hardin
Ms. Susan Harman
Mrs. Beatrice J. Harnad
Ms. Sandra S. Harper
Ms. Jane S. Harris
Ms. Roxanne C. Harris
Mrs. Joanelen E. Hart-Bretches
Mr. and Mrs. Brian J. Harvick
Ms. Cynthia A. Hasler
Mr. Paul L. Hatcher
Mr. and Mrs. Edward F. Hawkins
Mrs. Norma L. Hayes
Ms. Dana M. Hays
Mr. and Mrs. Kevin R. Hazlett
Heatex Inc
Ms. Christina E. Hedrick
Ms. Sherri P. Heshman
Mr. Anthony Helmick
Help-U-Sell
Ms. Juanita W. Henderson
Ms. Sherri Gail Henderson
Mrs. Lola B. Hensley
Dr. Carolyn C. Herring
Hershey Chocolate of Virginia
Mr. and Mrs. Emanuel J. Hewitt
Ms. Brenda L. Hicks
Ms. Cynthia Higgs
Ms. Peggy C. Hill
Ms. Darlene Hilton
Ms. Betty C. Hite
Ms. Julie S. Hite
Ms. Lisa Hizer
Mr. Bobby Whitescarver and Mrs. Jeanne T. Hoffman

Ms. Karen L. Holland
Ms. Caravella M. Holly
Ms. Elaine A. Houff
Huffman Insurance Agencies Inc.
Mr. Stephen Huffman, Sr.
Ms. Susan Huffman
Ms. Bobbi J. Hughes
Mr. and Mrs. Chase D. Hughes
Mrs. Kathryn M. Humphreys
Mr. and Mrs. Tommy Humphries
Ms. Gail Hundley
Ms. Patsy M. Hunter
Mr. Tracy Hunter
Ms. Teresa Hupp and Mr. Thomas Byerly
Mr. Otis Huston
Mr. Buddy Hutchens
Mr. and Mrs. Robert T. Ingram, Jr.
Innovative Refrigeration Systems, Inc.
Mr. and Mrs. E. Thomas Jennings, Jr.
Mrs. Martha M. Johnson
Dr. Connie S. Jones and Mr. Patrick A. Turner
Ms. Janet L. Jorgensen
Ms. Judith Karnie
Mr. and Mrs. Robert M. Kane
Mr. and Mrs. Richard M. Kane
Ms. Melanie Keagy
Mr. James P. Keathley
Dr. Kenneth W. Keller
Dorsey and Gudrun Kelly
Ms. Lauren Keys
Mrs. Anne Kimmett
Mrs. Bonnie W. Kimmett
Mr. Anthony C. Kincaid
Ms. Elizabeth W. Kirtz
Mrs. Patsy P. Kislek
Ms. Helen S. Kitchens
Ms. Janice Kitts
Ms. Judy A. Knick
Mr. and Mrs. James B. Knight
Ms. Tyffanie Knight
Ms. Nancy E. Koplin
Mr. and Mrs. Harry R. LaBrie
Dr. and Mrs. Swen E. Laser
Ms. Stacy E. Lawhorne
Mrs. F. Louise Lawler
Mr. and Mrs. William D. Layman
Lebanon Presbyterian Church
Ms. Lisa M. Lenker
Mr. Charles L. Leonard
Ms. Kendra Lewis
Ms. Kristie L. Lewis
Ms. Lorie E. Lichtenwalner
Mrs. Darlene A. Lilly
Ms. Mary B. Linstra
Mr. and Mrs. James Lockridge

Mr. Andy Long
Mr. and Mrs. Todd Long
Ms. Rebecca T. Losh
Mr. Michael H. Lotts
Mrs. Geraldine S. Lowe
Ms. Melody C. Lowery
Ms. Christina L. Lucas
Mrs. Monta Lucas
Mr. and Mrs. Frank Lucente
The Honorable and Mrs. Victor V. Ludwig
Elizabeth and Harry Lumadue
Mr. Philip C. Lynch
Mr. and Mrs. Samuel Lyon
M & M Mobile Wash
MAB Consulting LLC
Ms. Kara R. Malcolm
Mr. and Mrs. Dave Mangun
Mr. Jonathan A. Mannix
Dr. and Mrs. Richard S. Mansfield
Ms. Amy Markham
Ms. Kathleen W. Marshall
Violet Marshall
Mr. and Mrs. Dale L. Martin
Mr. and Mrs. Micheal E. Martin
Mr. Ronald W. Mason
Ms. Michelle Mason-Pedigo
Ms. Mary H. Matheney
Ms. Pamela P. Mathews
Ms. Faye L. Mathyas
Drs. Nelly and David Maybee
Mr. and Mrs. Michael B. Mayo
Ms. LaVern McCarty
Mr. Kemper A. McCauley
Ms. Jennifer McCrickard
Mr. and Mrs. John C. McCue III
Mr. William C. McCutcheon
Ms. Jennifer McDonald
Mr. and Mrs. Frank J. McDonough, Jr.
Mrs. Martha J. McDonough
Mrs. Kara J. McGill-Meeks
Ms. Megan C. McIlwee
Ms. Jeanne McKenna
Mr. Bobby L. McLain
Mr. and Mrs. Joseph S. McLeod
Mr. Michael L. McMillion
E.J. Meade
Mr. and Mrs. David R. Metz
Ms. Mary S. Meyer
Mr. Bradley K. Michael
Mr. and Mrs. Richards R. Miller
Ms. Mary Scott Miller
Mrs. Patricia R. Miller
Ms. Stephanie Mims
Ms. Rebecca C. Mohler
Ms. Anne J. Moore

Mr. and Mrs. John Moore
Mr. and Mrs. P. William Moore, Jr.
Mr. and Mrs. Mitchell Moore
Mr. and Mrs. Will Moran
Ms. Linda Moran
Ms. Frances J. Morawski
Ms. Theresa E. Morgogione
Carol J. Morris
Ms. Carolyn A. Morris
Ms. Lorene D. Moss
Ms. Sandra Motto
Ms. Judy A. Moyers
Ms. Krystal D. Moyers
Ms. Heather Mullins
Mr. and Mrs. Allen J. Murphy
Ms. Lilian Murray
Dr. Sonja M. Musser
Mr. Jeffrey Muzi
Mr. and Mrs. Douglas R. Myers
Ms. Marianne L. Neufeld
Mr. and Mrs. William M. Nicholson, Jr.
Dr. and Mrs. Dennis Nielson
Fredrick and Gail Nowak
Mr. and Mrs. William O. Nuckoles
Ms. K. Michelle Nuckols
Ms. Susan B. Obaugh
Mr. Dennis P. O'Connor
Ms. Mary R. Ogden
Mr. K. A. Ohlemeyer
Mr. and Mrs. Thomas H. Oneill
Mr. and Mrs. Stephen F. Owen
Mr. and Mrs. Michael Pangle
Drs. Jayashree and Shashank Parekh
Ms. Amy L. Patterson
Mrs. Kathleen W. Patterson
Mr. and Mrs. Ruffner Patterson
Paul Obaugh Ford
Ms. Shelley R. Payne
Ms. Lisa Peacemaker
Dr. and Mrs. Thomas R. Pereles
Dr. and Mrs. Paul Perkins
Ms. Ann C. Perry
Ms. Suzanne Persina
Mr. and Mrs. James P. Peters, Jr.
Mrs. Sadie Peters
Mr. and Mrs. William L. Pfost
Mrs. Marion M. Phillips
Mr. Royce H. Poletti
Dr. and Mrs. Matthew Pollard
Mr. and Mrs. Marc Porter
Ms. Beth Potts
Mr. and Mrs. Adam Printy
Property Management of Virginia
Ms. Brandy Puckett
Mr. and Mrs. Larry Puffenbarger

Ms. Kelli R. Puffenbarger
Mr. and Mrs. Douglas Pugh
Ms. Renee G. Pullen
Radon Medical, LLC
Mr. Michael Raines
Ms. Mary C. Rainey
Ms. Sarah A. Ralston
Ms. Suzanna Rea
Red Oaks Property Owners Association, Inc.
Mr. and Mrs. Jerry L. Reeves
Ms. Melissa A. Reeves
Ms. Emily S. Reno
REO Logistics
Ms. Barbara R. Rexrode
Ms. Devonia L. Rexrode
David F. Reynolds
Ms. Marlene R. Reynolds
Mr. Ralph J. Rhodes
Mr. Randall Richards
Mr. Todd Richardson
Ms. Ann C. Ridder
Mr. Leonard S. Riley
Mr. and Mrs. Freddie R. Roberts
Ms. Betty Robertson
Miss Crystal D. Robertson
Mr. Matthew Roller
Mr. and Mrs. John W. Root
Mrs. Bonnie Rose
Ms. Deborah Rose
Ms. Emily L. Rowzie
Ms. Robin L. Royal
Mrs. Joyce Ryder
S & W Home Appliance Corporation
Col. and Mrs. Woodson A. Sadler
Mrs. Lisa A. Schmidt
Ms. Teresa M. Schneider
Mrs. Ellen G. Schorsch
Mrs. Lelia G. Scott
Mr. and Mrs. Daniel A. Seamster
Ms. Rita S. Shaver
Ms. Jacqueline Sheets
Shenandoah Re-Cycling, Inc.
Ms. Sandra Shields
Ms. Linda K. Shifflett
Ms. Patricia L. Shifflett
Dr. and Ms. Gerald Showalter
Mr. and Mrs. Todd Showalter
Mr. and Mrs. James T. Shreve
Mr. and Mrs. William F. Sibert
Mr. and Mrs. Philip L. Sieck
Mrs. Phyllis W. Simmons
Mr. and Mrs. Ben D. Skelley
Ms. Martha Skelley
Ms. Lisa M. Smith
Ms. Lucy H. Smith

Mr. and Mrs. Lawrence E. Smoot
Ms. Peggy A. Snyder
Ms. Lisa Sockett
Somos, Inc.
Mr. John P. Sozanski
Mr. and Mrs. Phillip Spalding
Ms. Rosemary L. Spell
Ms. Sandra O. Sprouse
Ms. Susan M. Sprouse
Ms. Margaret H. Stables
Dr. Joan Stalzer
Mrs. Agnes H. Stanley
Mr. and Mrs. John W. Stanton, Jr.
Mr. and Mrs. Eric M. Stark
Dr. and Mrs. Kariton A. Stein
Ms. Judie P. Stidham and Mr. Paul G. Williamson
Mr. and Mrs. John B. Stoner
Ms. Kimberly Sullenger
Mr. Frank M. Summers
Mr. and Mrs. David Surratt
Ms. Janet S. Swartz
Ms. Caitlin B. Swecker
Mr. and Mrs. Alfred A. Swicegood
Mr. and Mrs. Stephen C. Tabscott
Ms. Gail L. Taliaferro
Mr. and Mrs. Joseph C. Taliaferro
Mr. Gilbert R. Tallard
Ms. Vickie L. Taylor
Ms. Barbara Thomas
Mr. Douglas S. Thompson
Mr. and Mrs. Kirby L. Throckmorton
Dr. and Mrs. James S. Tiedeman
Ms. Jan Tishok
TNT Logging LLC
Ms. Jean H. Toman
Ms. Allison L. Toner
Ms. Tammie W. Toner
Mrs. Lynn T. Toth
Joseph Truxell
Ms. Margery L. Turk
Mr. Duane Turner
Dr. and Mrs. Stephen Turner
Ms. Elaine Turville
Dr. Kristin Turza
Mr. and Mrs. Gary L. Tyeryar
Valley Community Services Board
Mr. Douglas L. VanLear
Mrs. Suzie VanValkenburg
Ms. Nancy Varner
Mr. and Mrs. Andrew J. Ventura
Mrs. Susan C. Vernon
Verona United Methodist Church
Virginia Frame Builders & Supply, Inc.
Walker Transportation Services, Inc.

Mr. and Mrs. W. T. Walton
Mr. and Mrs. Frederick A. Wampler
Ms. Leng-Sui Wang
Mr. Bruce D. Ward
Mrs. Ruth M. Ward
Ms. Martha B. Ware
Ms. Brenda Wargo
Warner Insurance Agency LLC
Ms. Virginia A. Warrick
Mr. and Mrs. Larry A. Washburn
Ms. Pamela D. Watkins
Mr. and Mrs. Thomas E. Watson
Ms. Jacklynn A. Webb
Ms. Angela Weisenberger
Mr. Mark Wells
Ms. Pamela H. Wells
Ms. Daniele Wenger
The Reverend Mark A. Westebbe
Ms. Liisa T. Westen
Westhills Company, Inc.
Westminster Presbyterian Church
Mr. and Mrs. Robert Wetzel, Jr.
Ms. Amanda R. Widner
Ms. Elaine D. Wilcox
Ms. Flora Williams
Ms. Patricia H. Wills
Dr. Thomas Wills
Mr. H. Wharton Winstead
Ms. Lorie L. Wolfe
Ms. Anne S. Wong and Mr. Shawn Wong
Mr. Christopher P. Wray
Mr. and Mrs. Robert E. Yancey
Mr. and Mrs. Jim Young
Mr. and Mrs. Roderick A. Young
Ms. Stacy Young
Mr. and Mrs. Joseph E. Zapotoczny
Mr. and Mrs. David M. Zeiner
Mr. and Mrs. Michael E. Zelena
Mr. and Mrs. David Zerlaut
Ms. Mary J. Zwart

UNDER \$100

Anonymous
Ms. Maria Adams
Mr. and Mrs. Albert Adamson
Mr. Robert Adrian
Ms. Denise M. Agans
Mrs. Helen Alger
Dr. Cynthia and Mr. Gregory Allen
Mr. Zachary Allen
Ms. Megan Almarode
Mrs. Linda G. Alverson
Ms. Kathryn F. Anderson
Mr. and Mrs. Robert L. Anderson, Jr.
Mr. and Mrs. Johnnie G. Anderson

Ms. Sarah S. Andre
Arbor Hill Investors LLC
Ms. Penelope Arms
Ms. Linda Armstrong
Ms. Jennifer Ashcraft
Ms. Betty A. Atkins
Augusta County Fair
Ms. Karen Auriti
Ms. Anne Aycock
Ms. Andrea M. Babral
Ms. Jacqueline E. Badger-Jackson
Mr. and Mrs. Timothy Baker
Mr. and Mrs. Steve L. Baker
Baldwin Park Residents Association
Mr. and Mrs. John Ballurio
Bank Design & Equipment Inc.
Ms. Kiera A. Barker
Aris Barmore
Dr. and Mrs. Michael A. Barrett
Mr. Devan L. Bartley
Mrs. Pamela B. Barton
Mr. Steven Barton
Mr. and Mrs. William E. Bayer
Ms. Mattie G. Beale
Mr. and Mrs. Clarence M. Beard
Mrs. Glenna G. Beard
Mrs. Reta Belk
Ms. Brenda R. Bennett
Mrs. Dian S. Bennick
Ms. Patricia A. Benson
Mr. Max Berman
Beta Sigma Phi Alpha Mu Chapter
Ms. Stephanie D. Bickers
Mr. and Mrs. Larry A. Bissett
Ms. Nancy J. Blanton
Ms. Tammy Bliss
Mr. Robert L. Blose
Mr. Thomas Blunt
Mr. Cecil L. Boggs, Jr.
Mrs. Jean A. Boland
Mr. and Mrs. James R. Boles
Ms. Judy A. Bonin
Ms. Angela H. Bourbeau
Ms. Gladys M. Bowles
Mr. and Mrs. William H. Bowman
Mr. and Mrs. Ralph Boyers
Mr. and Mrs. Chester L. Bradford
Bradford Area Christian Academy
Mr. and Mrs. Louis T. Bradley
Mr. and Mrs. Douglas B. Brevard
Mr. Grant Brinkley
Ms. Amber K. Brooks
Mrs. Helen F. Brooks
Dr. Mark P. Brooks and Dr. Susan Brooks
Ms. Quenisia Brooks

Ms. Ashleigh E. Brown
Ms. Cynthia J. Brown
Ms. Dawn Brown
Mr. Glenwood S. Brown, Jr.
Ms. Rachel C. Brown
Mrs. Virginia Brown
Ms. Mary Bruce
Ms. Peggy M. Brust
Ms. Kay G. Buchanan
Ms. Kim Buchanan
Ms. Virginia F. Bunch
Mrs. Krista Buracker
Mr. and Mrs. Charles L. Burton
Mrs. Martha Bushman
Mr. Steven R. Butler
Mr. and Mrs. George E. Buzzard
Ms. Lisa Byers
Ms. Kaitlin Byrd
Mrs. Marian J. Calder
Calvary Baptist Church Flower Ministry
Ms. Lisa R. Camden
Ms. Amber Campbell
Mr. and Mrs. Don M. Campbell
Mr. Donald R. Campbell
Mrs. Janet E. Campbell
Ms. Margaret Campbell
Mr. Michael W. Campbell
Ms. Theresa M. Campbell
Ms. Jeanne C. Campfield
Mrs. Betty S. Carpenter
Ms. Carolyn B. Carter
Ms. Nancy A. Carter
Mr. and Mrs. Wayne Carter
Mrs. Lisa H. Cashatt*
Ms. Doris H. Cason
Ms. LaVonne Cauthen
Mr. and Mrs. Anthony S. Caywood
Mr. and Mrs. James I. Chambers
Mr. and Mrs. Marsden E. Champaign
Ms. Katharine B. Chase
Ms. Martha M. Chenault
Mr. Hugh C. Claggett, Jr.
Ms. Betsy Clark
Mr. and Mrs. James W. Clark
Ms. Jennifer S. Clinedinst
Mr. and Mrs. Jerry Clysdale
Mrs. Cynthia J. Coates
Mr. Phillip R. Cobb
Mr. and Mrs. Alfred B. Cochran
Mr. James J. Cochrane
Ms. Heber Coffey
Mr. and Mrs. Patrick J. Coffield
Mrs. Beverley C. Coffman
Coffman's Landscape and Lawn
Mr. William Cohee

Mrs. Susan F. Combs
Mr. John B. Conner
Mr. and Mrs. Harold Cook
Ms. Brandy Coon
Mr. and Mrs. Danny Copenhaver
Mr. and Mrs. James P. Craig
Mrs. Shirley R. Craig
Ms. Bonnie C. Craun
Ms. Amy Crawford
Mr. John Crawford III
Mr. Steven C. Crenshaw
Mr. and Mrs. Harry H. Crosby
Mrs. Julie H. Crowder
Ms. Sara K. Culpepper
Mr. Curtis J. Cupp
Mr. Walter S. Davenport
Mr. and Mrs. Frederick A. Davino
Ms. Brittany M. Davis
Ms. Charlotte A. Davis
Ms. Peggy F. Davis
Ms. Stacy Davis
Mrs. Veronica C. Davis
Mr. Earle E. Day
Ms. Haily Day
Mr. Michael Day
Ms. Maxine P. Dean
Ms. Catherine E. Deane
Mr. and Mrs. Emerson L. Deitz
Mr. and Mrs. Matthew G. Deitz
Mr. and Mrs. Bruce L. Dennis
Ms. Jean Depriest
Ms. Mary-Kate DePriest
Ms. Dorothy M. Desper
Mr. and Mrs. Anthony W. Dewald
Mr. and Mrs. Charles J. Dewitt
Ms. Glenda S. Dewitt
Ms. Betty B. Diehl
Mrs. Brenda Diehl
Ms. Stacey L. Diehl
Mr. Paul J. Dietrich
Mr. and Mrs. Charles F. Dillow
Mrs. Susan C. Dillow
Ms. Kathy Dixon
Mr. Thomas D. Dodge, Jr.
Ms. Eva C. Dollens
Donovan's Used Cars
Ms. Linda L. Doran
Ms. Mary W. Dove
Ms. Sherry M. Doyle
Mr. and Mrs. Lynwood L. Dull
Mrs. Nancy L. Duncan
Mr. and Mrs. Ronald K. Duncan
Ms. Crystal Dunn
Ms. Virginia H. Durville
Ms. Marsha A. Eavey

Mr. William Eckman
Mr. John C. Edgecomb
Ashley C. Edwards
Mr. and Mrs. Joe Edwards
Mr. and Mrs. Stephen B. Edwards
Mr. John Egnor
Mr. and Mrs. O.J. Emory, Jr.
Ms. Brandi S. Ervin
Mr. and Mrs. James E. Estep
Ms. Tammy M. Evans
Mr. and Mrs. J. Vern Fairchild, Jr.
Mrs. Mary C. Fannin
Ms. Barbara M. Farley
Ms. Nicole Fauver
Mr. and Mrs. William H. Ferrier
Mr. and Mrs. G. Glenn Fields, Jr.
Mr. and Mrs. David A. Fike
Ms. Patricia Fillion
Ms. Joan M. Fink
Mr. Charles D. Firebaugh
First Baptist Church
Ms. Charlotte Fitzgerald
Mrs. Carolyn G. Fix
Mr. and Mrs. William C. Flournoy
Mr. and Mrs. Freddie L. Floyd
Ms. Marguerite E. Floyd
Mr. Walter L. Floyd
Mr. and Mrs. Neil F. Foley
Ms. Cierra Folks
Ms. Elizabeth Follansbee
Dr. and Mrs. Roger H. Ford
Mrs. Dana Frazier
Mrs. Janet M. Fretwell
Ms. Dawn Funkhouser
Mr. and Mrs. Houston G. Gaddy, Jr.
Mr. and Mrs. Eddie Galvin
Mrs. Teresa A. Gant
Mr. Robert J. Garber
Ms. Sarah N. Garrison
Ms. Annie Sue H. Gaskins
Ms. Greta B. Gayhart
Ms. Allison Gayheart
Mr. and Mrs. William A. Gentry
Mr. and Mrs. John W. Gettemy
Mr. and Mrs. Royce O. Gibson
Mr. Lewis T. Gilbert
Mr. and Mrs. Warren H. Gilmer
Gina's Pet Grooming
Mr. Perry R. Giunta
Mr. and Mrs. James E. Glaspey
Mr. and Mrs. Paul A. Goble
Ms. Teresa A. Gonzalez
Ms. Ann B. Good
Mr. Donald A. Good
Mr. and Mrs. Steven L. Gordon

Mr. and Mrs. Doug W. Gordon
Ms. Virginia A. Graham
Ms. April R. Grimm
Mr. Warren Groeger
Mr. Richard D. Gum
Mr. and Mrs. Lewis T. Gurkin
Mr. Rick Haas
Ms. Kelly Haber
Mr. and Mrs. Richard L. Hadden
Mr. and Mrs. Preston H. Hadley III
Ms. Olivia D. Hall
Mrs. Catherine G. Hamilton
Mr. and Mrs. Michael G. Hamp
Ms. Debra S. Hamrick
Mr. and Mrs. Joe Harman
Mr. and Mrs. H. W. Harouff
Harrisonburg Family Chiropractic LLC
Ms. Ashley D. Hartshorn
Mr. and Mrs. W. J. Haynie III
Ms. Shirley C. Hays
Ms. Tina M. Heatwole
Ms. Delores Hemskey
Ms. Deborah L. Henderson
Mr. and Mrs. Wendell L. Henkel
Mr. and Mrs. Arthur W. Hering
Ms. Amanda M. Herndon
Ms. Myrna Hershey
Ms. Norma L. Hill
Dr. and Mrs. Paul E. Hill, Jr.
Mr. and Mrs. Nelson R. Hiner
Mr. and Mrs. J. M. Hinkle
Ms. Karen C. Hinkle
Mr. and Mrs. James W. Hinton
Ms. Cindy Hirsch
Mr. and Mrs. Max Hirtriter, Jr.
Mr. and Mrs. Gary Hodges
Mr. John W. Hoffman
Ms. Linda Shue Hoffman
Ms. Margaret A. Hogan
Ms. Betty Holbert
Mr. and Mrs. Otis W. Holley
Mrs. Philippa D. Holley
Ms. Aida H. Holtz
Home Instead Senior Care
Ms. Norma J. Honaker
Mr. and Mrs. William M. Hoover
Mr. David P. Hope
Mr. and Mrs. William Hopkinson
Ms. Beth Hordines
Mr. and Mrs. Francis J. Horisk
Mr. and Mrs. Jerry L. Horn
Ms. Gloria Horne
Ms. Judith B. Hostetter
Ms. Monique C. Houser
Mr. and Mrs. Robert M. Howard

Ms. Carolyn P. Howell
Ms. Megan L. Howell
Ms. Phyllis Howell
Mrs. Joyce P. Huddle
Mr. and Mrs. Wayne Huffman
Ms. Lynette H. Hughes
Mr. and Mrs. Lyle Hull
Mr. Dale Hungerford
Mr. Mark Hunter
Mr. Ronald W. Huntley
Mr. and Mrs. Travis T. Hutchinson
Ms. Patricia W. Hyden
Ms. Crystal Jarrels
Ms. Amy Jarvis
Ms. Judith R. Jarvis
Mr. Doug Jena
Mr. Kjeld S. Johansen
Ms. Alice J. Johns
Mr. Andrew J. Johnson
Dr. Carolyn H. Johnson
Mr. and Mrs. Douglas E. Johnson
Ms. Emily R. Johnson
Mr. Hansford J. Johnson
Ms. Megan H. Johnson
Mrs. Patricia W. Johnson
Ms. Sharon Johnson
Mr. Travis Johnson
Ms. Cheryl L. Jones
Mr. and Mrs. David E. Jones
Ms. Deborah J. Jones
Mr. and Mrs. Earl Jones
Ms. Rebecca Jones
Ms. Sue H. Jones
Dr. Susan Jones
Mr. Willie M. Jones
Ms. June Jordan
Mrs. Cheryl Jothan
Ms. Breanna Judy
Ms. Charlotte M. Kagey
Ms. April Keegan
Ms. Emily D. Keister
Mr. and Mrs. Ray D. Kellogg
Ms. Brenda J. Kelly
Ms. Danielle E. Kelly
Ms. Ashley M. Kennedy
Mr. and Mrs. Joseph Kennedy
Ms. Lorain H. Kent
Mr. and Mrs. Ray W. Kidwell
Mr. Vince Kimball
Ms. Nancy K. Kimble
Mr. Scott Kimmel
Mr. and Mrs. Marc Kinder
Ms. Sara A. King
Ms. Sherry P. Kingery
Ms. Annette M. Kingston

CORNERSTONE LEGACY SOCIETY

The Legacy Society recognizes individuals and couples who have provided for the care of future patients through an estate or planned gift.

Everett R. Andes*
Helen J. Angier*
Lelia Jane Bateman*
Lewis Bell*
Laure E. Bermna*
Dawn C. Bulle*
Frances Blackwell Campbell*
Alphield Canning*
Elizabeth Binford Chew Carr*
E. Stuart and Nina Crow
Connie Doebele
John V. Downey*
Sharon Driscoll

Janet S. Edwards*
Dave Eckard*
Patricia H. Fleenor*
Gary M. Fletcher*
A.H. and Clara Higginbotham*
Robert E. Holsinger*
Jean Holbert Kent*
Ruth G. Kibler*
Robert and Nancy Kyler
Dorothy H. Lamb*
David E. Matheney, Jr.
Cheri and Phil Moran
Jean Mundy*

Claudine Obaugh*
Glenna Obaugh*
Julie Plumbley, MD
Austin Seal*
Audrey Gowing Smith*
Lorraine Sprouse*
Myrtie Stupkin*
Kathryn Hanger Taylor*
Boyd W. and Rose S. Thompson*
Rose S. Thompson*
Mary Louise Stombock Walker*
Doris R. Willis*
Roxie H. White*
*Deceased

Col. Melissa E. Patrick, Ret.
Mr. and Mrs. Glen W. Patterson
Ms. Tamela P. Patterson
Ms. Vickie L. Patterson
Mr. and Mrs. Robert F. Payne
Mr. Beryl E. Pealer
Ms. Cynthia G. Pender
PEO Sisterhood 59 Chapter HJ-FL
Ms. Donna Perez
Mr. and Mrs. Edward D. Perry
Mr. and Mrs. Todd Peruski
Ms. Venessa A. Peters
Mr. Thomas W. Petersen
Ms. Emily Peterson
Mr. and Mrs. Hugh S. Pettis
Mr. Harold Philipsen
Dr. Stephanie Pitsilos and Mr. Jason Stell
Mr. G. Leonard Pittman, Jr.
Mr. and Mrs. James R. Plaugher
Ms. Judith M. Pollard
Mrs. Susan M. Polly
Ms. Carrie F. Pool
Mrs. Sandra B. Powell
Mr. Michael Powers
Mr. and Mrs. Lewis E. Price
Ms. Amy D. Prochaska
Mrs. Vivian L. Procter
Mrs. Leigh Ann Quensenberry
Mr. Allen W. Quick
Mr. and Mrs. Bryan M. Quick
Ms. Sara Quick
Ms. Lara S. Quinn
Mr. and Mrs. Robert S. Rader
Mr. and Mrs. Wilson C. Rader
Ms. Linda L. Radka
Mr. Robert Ramsey
Mr. Marcellus S. Rankin, Jr.
Mr. and Mrs. William Ratigan
Mrs. Eugenia H. Redard
Ms. Shelly L. Reitenauer
Ms. Peggy L. Renfro
Mr. and Mrs. Steven M. Reynolds
Mr. Herbert A. Rhodenizer
Ms. Corine B. Rhodes
Mrs. Dawn L. Rhodus
Mr. and Mrs. Mark S. Richardson
Ms. Rhonda Richie
Mr. and Mrs. Julian W. Rittenhouse
Mr. and Mrs. Herman Ritter
Ms. Inez L. Roadcap
Mr. and Mrs. Jeffrey Roadcap
Mr. Calvin L. Roberts
Ms. Karen Robertson
Ms. Katy Robertson

Ms. Lela M. Kitts
Ms. Jennifer J. Klemm
Mrs. Arvella M. Kline
Ron and Sandy Knicely
Ms. Martha B. Knight
Mrs. Anne C. Knopp
Ms. Nina Knopp
Mr. and Mrs. Erich L. Kosowitz
Mr. and Mrs. Matthias Kriebelder
Ms. Geraldine D. Kruger
Mr. and Mrs. Anthony R. La Padula
Ms. Ruth A. Labate
Ms. Crystal L. Lambert
Ms. Diana R. Lambert
Ms. Vickie L. Lambert
Ms. Mertie L. Landram
Mr. and Mrs. Mark A. Lane
Ms. Judy S. Langley
Mr. and Mrs. Odell Langston
Ms. Caroline Law
Mr. Michael E. Layman
Ms. Susan D. Layman
Mr. and Ms. Gary Layne
Mr. Daniel Leech
Ms. Pamela D. Leech
Mr. and Mrs. John C. Leffingwell
Mr. Mike Leithren II
Mr. and Mrs. William Lendermon
Ms. Samantha L. Lendway
Ms. Betty Lester
Mr. William J. Leung
Ms. Margaret L. Lewis
Mr. and Mrs. David A. Ley
Ms. Lisa Lilly
Linville-Edom Ruritan Club

Mr. and Mrs. Richard W. Liskey
Mr. and Mrs. William E. Lohmiller
Ms. Delores Long
Dr. and Mrs. James A. Long
Mr. Thomas Long
Ms. Margaret J. Loring
Mrs. Frances C. Love
Ms. Shannon D. Love
Ms. Cherie D. Lowry
Mr. Webb M. Lutz
Mr. and Mrs. David J. Lynch
Ms. Allison MacDonald
Mrs. Kathryn T. Mace
Mrs. Linda Magalis
Ms. Jean Magee
Mr. and Mrs. Ronald Makosky
Ms. Ann Markwood
Mr. and Mrs. Alan Martin
Ms. Darcie Martin
Ms. Jean Mason
Ms. Tamera S. Mason
Mr. and Mrs. Lawrence E. Massey II
Master Engineers and Designers
Mr. and Mrs. Donald A. Mastrorocco
Mr. Matthew R. Matera
Mr. and Mrs. James K. Mathie
Ms. Kellie J. Matthaidess
Ms. Yulia Matveeva
Ms. Brenda F. Mawyer
Ms. Penelope McAllister
Mr. Roger W. McCafferty
Ms. Elaine E. McCarrick
Ms. Kimberly A. McCarthy
Ms. Eleanor McCauley
Ms. Erica D. McCauley

Ms. Donna McCrumb
Ms. Vickie L. McCullough
Ms. Maureen S. McCusty
Ms. Crystal L. McDilda
Ms. Sarah A. McGinnis
Dr. and Mrs. William McKibbin
Ms. Alice B. McInain
Mr. and Mrs. Gregory S. McMahon
Ms. Laura McNaughton
Mr. and Mrs. Jeremy F. McNeal
Mrs. Suzanne G. Meeks
Mr. and Mrs. Wesley Meeteer
Mr. and Mrs. William Meicke
Merck Company Foundation
Ms. Frances Meyer
Ms. Suzann L. Meyerhoeffer
Mr. and Mrs. Rodney C. Miano
Ms. Amber Michael
Ms. Sara M. Might
Millboro Christian Church
Ms. Deloris Miller
Mr. and Mrs. Garry W. Miller
Mr. and Mrs. Gordon W. Miller
Mr. and Mrs. Richard Miller
Mr. and Mrs. Richards R. Miller
Mr. and Mrs. Robert C. Miller
Ms. Bethany B. Mohler
Mr. Juan Montalvo
Mr. and Mrs. Eugene H. Mooney
Mr. Ernest G. Moore
Mr. and Mrs. J. Robert Moore
Mr. and Mrs. Lewis W. Moore
Mrs. Nancy Moore
Mr. and Mrs. William C. Moore
Mr. David Moran

Mrs. Sue C. Morley
Mr. and Mrs. James S. Morrison
Ms. Sarah A. Motley
Mr. Timothy Motsch
Mr. Andrew Moyer
Mt. Vernon Church of the Brethren
Ms. Sharon L. Mueller
Ms. Amy Mullins
Mr. James D. Mungovan
Mr. Ric Munoz
Ms. Julie Musser
Ms. Beverly Myers
Mr. and Mrs. James V. Natale
Mr. David M. Nessar
Mr. and Mrs. Philip E. Nestor
Mr. Irwin Neufeld
Ms. Patricia A. Nicholas
Mr. Ernest E. Nuckols
Mr. Bob Nutt
Mr. Kevin R. Obaugh
Mrs. Christine O'Connor
Ms. Becky A. Ofiesh
Ms. Yoshie M. O'Neill
Mr. and Mrs. Hal O'Quinn
Mr. Ralph B. Ostrander
Ms. Christy Ott
Ms. Lindy Lee Ott
Ms. Margaret J. Painter
Mr. and Mrs. Stacey J. Painter
Palmyra Church of the Brethren
Mrs. Donna J. Pangburn
Mr. and Mrs. Bradley P. Pangle
Mrs. Lucille J. Pangle
Ms. Ruth H. Parsons
Mr. and Mrs. William J. Paskvich

Ms. Lena C. Robertson
Robin Fowler State Farm
Ms. Jennefer L. Robinson
Mrs. Martha W. Robinson
Mr. Ronald R. Robinson
Mrs. Shirley D. Robinson
Ms. Gaytha Roby
Mr. Littleton Roden
Ms. Clarice C. Rodgers
Ms. Dorothy Rodgers
Ms. Karen H. Rodgers
Mr. and Mrs. Daniel Ross
Ms. Katherine H. Ross
Ms. Patricia Rubley
Ms. Elizabeth T. Ruehl
Mr. and Mrs. James W. Rule
Ms. Peggy M. Rule
Ms. Alice H. Ruliffson
Ms. Brenda Russell
Mr. Paul Russell
Mr. and Mrs. Jeffrey S. Saul
Mr. and Mrs. James E. Sayre
Mrs. Annette L. Schaff
Ms. Susan A. Scharf
Ms. Cynthia Scheller
Mr. and Mrs. Thomas R. Schnell II
Ms. Pauline A. Schuldt
Ms. Haley W. Schultz
Mr. Brandon L. Seamster
Mr. Edward L. Seay
Second Presbyterian Church
William and Debra Sedr
Dr. Linda Seestedt-Stanford
Ms. Lois A. Sell
Mr. and Mrs. Keith Senderak
Mr. and Mrs. Barry D. Sensabaugh
Ms. Jennifer L. Sexton
Mr. and Mrs. Jacob Shaner, Jr.
Mr. Carl L. Sheffer
Shenandoah Blue LLC
Mrs. Jennifer S. Shields
Mr. and Mrs. Donnie L. Shifflett
Mrs. Lynda F. Shifflett
Mr. and Mrs. Ron Shifflett
Ms. Tammy B. Shipe
Mr. Sanford H. Shoaf
Ms. Yvette T. Sholes
Mr. William T. Showker
Mrs. Elizabeth K. Shuey
Mrs. Lula Belle Shuler
Ms. Linda Silling
Ms. Agnes K. Simmons
Ms. Crystal H. Simmons
Ms. Nicole Simmons
Mr. Vernon R. Simmons

Ms. Ashley Simpson
Mr. and Mrs. Tom E. Sites
Mrs. Yvonne Skeens
Mr. and Mrs. Thomas C. Siwoski
Ms. Dawn Smiley
Mr. and Mrs. Garry W. Smith
Mr. Gregory R. Smith
Mr. and Mrs. James F. Smith
Ms. Lara K. Smith
Mr. and Mrs. David M. Smith
Mr. and Mrs. Michael J. Smith
Ms. Patricia A. Smith
Ms. Paula Smith
Mr. and Mrs. Rick Smith
Mr. and Mrs. Glenn T. Smith
Mrs. Dolores R. Snarr
Mr. and Mrs. Daniel L. Snavey
Ms. Sara F. Snelson
Mr. Thomas E. Snider
Mr. J. Randy Snodgrass
Ms. Talisa M. Snow
Ms. Betty A. Snyder
Mrs. Daun Y. Snyder
Ms. Jaclyn C. Snyder
Mr. Michael Snyder
Ms. Patricia M. Snyder
Mr. and Mrs. Paul Sorrell
Mr. and Mrs. Andrew T. Southard
Ms. Martha B. Sparks
Ms. Charlene Spears
Spring Hill Presbyterian Church
Dr. and Mrs. George T. Sproul
Col. Hugh B. Sproul III
Ms. Debra A. Sprouse
Dr. Amy L. Spurlock
Mr. Adrian Stacy
Ms. Holly Stambaugh
Staunton Church of God
Ms. Debra Stevens
Mr. and Mrs. Tim Stewart
Mr. and Mrs. Dennis C. Stewart, Jr.
Mr. and Mrs. Ronald L. Stewart
Mr. and Mrs. James C. Stinnett
Ms. Valerie D. Stone
Stonewall Rifle & Pistol Club Inc.
Mr. and Mrs. Ronald W. Stover
Ms. Mia T. Strickler
Mr. and Mrs. Robert Stroube
Stuarts Draft Middle School
Mr. and Mrs. Alex Sullivan
Ms. Lisa M. Sullivan
Mrs. Frank Summers
Summit Church Of The Brethren
Ms. Lynn L. Sump
Sunshine Social Fund

Ms. Rebecca Swartz
Mr. and Mrs. Gary W. Swats
Mr. and Mrs. Robert C. Tadlock
Dr. John R. Talbert
Mrs. Diane W. Taylor
Mr. and Mrs. Dwight G. Teele
Ms. Elizabeth Terry
Mr. and Mrs. Frank E. Teter, Jr.
Ms. Brianna Thomas
Mr. Gene B. Thomas
Mr. David Thompson
Ms. Rebecca F. Thompson
Mrs. Cynthia M. Thornton
Mr. and Mrs. James D. Todd
Ms. Sharon B. Tooley
Ms. Nancy E. Trohaugh
Ms. Betty W. Truslow
Mr. and Mrs. Vince Tullo
Ms. Maryanna Turnage
United Network for Organ Sharing
Ms. Beverlee B. Vaughan
Ms. Marian L. Veney
Ms. Anne K. Vest
Mr. Luke S. Vicario
Mr. and Mrs. John D. Vincent
Mr. and Mrs. Peter J. Viola
Ms. Cynthia R. Wade
Mr. and Mrs. Bland M. Wade
Ms. Jennifer Wafer
Ms. Susan Wahlers
Ms. Donna V. Wait
Mr. and Mrs. Lloyd S. Walker
Ms. Misty Walker
Mr. Edward C. Wallace
Mr. and Mrs. John Wangler
Mr. Jack Ward
Mrs. Judy Ward
E. Waterhouse
Mrs. Lauren H. Waters
Mr. Dirk A. Watts
Waynesboro Choral Society
Waynesboro Newcomers Club
Mr. and Mrs. Robert H. Wease
Mr. and Mrs. Donald F. Weaver
Mrs. Shirley W. Webster
Mr. Robert J. Weiss
Ms. Wanda L. Welcher
Mrs. Mary L. Welliver
Mr. and Mrs. James E. Wenger
WHBR, Inc./Blue Sky Radiator and
Electrical Shop
Ms. Colleen K. White
White, Withers, Masincup & Cannaday, P.C.
Mr. and Mrs. Lewis A. Whitmer
Mr. and Mrs. C. Elwood Whitmore

Mr. Thomas J. Whitworth, Jr.
Mr. William L. Wikel, Jr.
Mr. Melvin L. Wilkins
Mrs. Deborah L. Willis
Mr. and Mrs. Brennon C. Wilson
Mr. and Mrs. Charles L. Wilson
Mr. Larry Wilson
Mr. and Mrs. W. Scott Wilson
Ms. Kendra R. Wimer
Mrs. John W. Wimmer
Ms. Sue Wingfield
Mrs. Janet R. Witcofsky
Mrs. Amy Wolfe
Mr. and Mrs. Orville A. Wolters
Mrs. Dinah L. Wood
Mr. and Mrs. Henry W. Wood
Ms. Mary Wood
Ms. Ashley N. Woodson
Ms. Emily D. Wyatt
Ms. Bonita G. Wymer
Ms. Nancy Yeaman
Ms. Sarah V. Young

GIFTS IN KIND

\$5,000 \$9,999

First Baptist Church
Shenandoah Valley Quilters Guild

\$1,000 \$4,999

Ms. Anne Alexander
Mr. Gary Kirby
Ms. Diane Louvet
Shentel

\$500 \$999

Crown Jewelers
H.L. Lang & Co.
Mr. and Mrs. Freddie Higgins
Moe's Southwest Grill
Saint Michael's Church



IN HONOR OF

Dr. Mark T. Andres

Mrs. Pamela B. Barton

Velva and David Barr

Ms. Virginia Hitt
Louis and Dick Plaughner

Nicole Benson, LPN

Mr. Philip E. Balsley

Lisa D. Bradley, RN

Mrs. Lisa H. Cashatt

Dr. Glenn Brammer

Mr. Joseph R. Burkholder
Mr. Randall T. Perdue

Ms. Carol Cobb

Mrs. Mary Ruth Coleman

Tami L. Collins, NP

Mr. Earle E. Day

Mr. E. Stuart Crow

Robin and Cathy Crowder

Dr. Robin Crowder

Tami and Mark Radecke

Dr. Raymond Cruz

Ms. Marianne L. Neufeld

Ms. Veronica C. Davis

Ms. Carolyn B. Carter
Ms. Marian L. Veney

Mr. Buddy Dey

RSC Real Estate Corporation

Mr. Claude Malcolm "Mac" Dodd

Ms. Lisa Byers

Tanya M. Dovel, CNA

Mr. Ronald Adcock

Sabine S. Dukes, RN

Mr. Joseph R. Burkholder

Mrs. Diana Easley

Ms. Virginia A. Warrick

Dr. Benjamin G. Farley

Ms. Barbara M. Farley

Ms. Carrie P. Gibbons

Ms. Flora Williams

Dr. C. Buckley Gillock

Mr. Lewis T. Gilbert

Dr. George A. Godette

Ms. Virginia H. Dunville

Dr. Rodney C. Graber

Ms. Shirley C. Hays

Katherine A. Hallberg, RN

Mr. Charles L. Leonard

Brett Haymon, RN

Mr. Charles L. Leonard

Dr. Christopher Heck

Mrs. Dorothy A. Cochrane
Mr. and Mrs. Garry W. Smith
Ms. Helen E. Braunworth

Mr. Dave Herr

The Lamay Family
The Withers Family

Mr. Freddie Higgins

Mrs. Diane Higgins

Teresa Hinkley, RN

Dr. Sonja M. Musser

Dr. William R. Jones III

Mr. Paul J. Dietrich
Ms. Juanita W. Henderson

Col. Joseph H. Just (Ret) and Charlene Just

J. Scott Just, MD and Casey R. Just

Ariel K Kenney, RN

Mr. Ronald Adcock

Bunny and Larry Kimmett

Mrs. Anne Kimmett

Mrs. Sandra Knicely

Ms. Beth Potts

Dr. Robert M. Kyler

Mrs. Patsy P. Kislek
Ms. Marianne L. Neufeld
Mr. and Mrs. Hugh S. Pettis
Col. and Mrs. Woodson A. Sadler

Mrs. Joanne M. Lam

Mr. and Mrs. David A. Fike
Mr. and Mrs. Alan Martin

Scott and Hilda Litchfield

J. Scott Just, MD and Casey R. Just

Audrey Martin, RN

Mr. Ernest E. Nuckols

Dr. William B. McKibbin

Mrs. Diane W. Taylor

Mrs. Ann D. McPherson

Mr. and Mrs. A. Thomas Fechtel

Penny G. Messer, RN

Mr. Joseph R. Burkholder

Cheri and Phil Moran

Dr. and Mrs. Dennis Nielson

Ms. Linda Moran

Ms. Patricia R. Allen

Dr. David B. Morgan

Ms. Marianne L. Neufeld

Ms. Pamela D. Patrick

Col. Melissa E. Patrick, Ret.

Dr. Thomas R. Pereles

Mrs. Charlotte L. Stover

The Reverend John C. Peterson III

Ms. Emily Peterson

Mr. Deane "Burnie" F. Powers

Tami and Mark Radecke

Dr. Joseph L. Ranzini

Ms. Martha B. Knight

Tom and Alice Reider

Ms. Ramona Bosserman

Mr. Freddie Roberts

Mrs. Delores Roberts

Mr. Aaron Robertson

Mr. and Mrs. David J. Lynch

Ms. Lori Showalter

Ms. Flora Williams

Mr. Carl Simmers

Ms. Glenda S. Dewitt

Dr. Kenneth S. Sternberg

Mr. Joseph R. Burkholder
Mrs. Shirley P. Cox
Mr. Thomas W. Petersen

Dr. Brian Stisser

Mr. Phillip E. Balsley
Mr. Roger W. McCafferty

Ms. Laura J. Summy

Mrs. Carolyn G. Fix

Bethany S. Supinger, RN

Dr. Sonja M. Musser

Ms. Cheryl B. Taylor

Dr. Sonja M. Musser

Dr. Robert P. Taylor

Mrs. Diane W. Taylor

Dr. William G. Thompson

Ms. Marianne L. Neufeld
Mr. Melvin L. Wilkins

Dr. Kristin Turza

Janet O. and Alfred P. Meyer

Ms. Carla VanDevander

Anonymous

Dr. Shalendra K. Varma

Mr. and Mrs. William H. Ferrier

Dr. Naheed Velji

Mrs. Patricia R. Miller
Mrs. Judith W. Zdinak

Dr. George Verghese

Mrs. Lola B. Hensley

Ms. Rita C. Wilhoit

Mrs. Cynthia J. Coates

Ms. Vickey G. Wood

Mr. and Mrs. Daniel R. Baker

Mrs. Cherie Zeiner

Mr. Michael Raines

IN MEMORY OF

Mrs. Marjorie P. Adcock

Mr. Ronald Adcock
Ms. Maxine P. Dean
The Pool Family
Ms. Carrie F. Pool
Mr. H. Wharton Winstead

Ms. Geneva Marie Allen

Classic Autobody Inc
Mr. and Mrs. G. Glenn Fields, Jr.
Ms. Deborah L. Henderson
Mr. and Mrs. Lewis E. Price

Ms. Harriet (Seaman) Allen

Ms. Annette Chandler

Mr. Walter D. Ambler, Jr. (W.D.)

DuPont Community Credit Union
Mrs. Barbara Enecker
Ms. Sarah A. Ralston

Ms. Virginia May (Puffenbarger) "Ginny" Armstrong

Mr. and Mrs. William Hopkinson

M & M Mobile Wash

Robert and Ethel Baker

Mr. and Mrs. Daniel R. Baker

Ret. MSgt. Robert Johnson "Bob" Baldwin, Jr.

Arbor Hill Investors LLC
Mrs. Reta Belk

Mr. Robert "Bobbie" L. Beard

Mrs. Glenn G. Beard

Mrs. Ruby Gail Bennett

The Bennett Family
Mr. and Mrs. Robert M. Howard
Ms. Barbara R. Rexrode

Dr. Thomas L. Berger

Mr. Thomas Niemann

Dr. Joe D. Bernard, Sr.

Dr. and Mrs. Clark B. Bernard

Mr. Gene Lesley Berry

Mrs. Linda Magalis
Mr. and Mrs. Edgar Meyerhoeffer
Mr. and Mrs. Steven M. Reynolds
Summit Church of the Brethren -
Homebuilders Sunday School Class

Mrs. Roberta Ann Bezok

Mr. Anthony F. Bezok

Dr. Robert L. Binda, Sr.

Dr. Carolyn C. Herring

Mrs. Penelope Burns (Patrick) Biskey

Mr. Elwyn M. Bull, Jr.

Mr. James A. Blackwell

Mr. Grant Brinkley
Ms. Jeane C. Campfield
Mr. and Mrs. James P. Craig
Ladies Auxiliary to Elliot's Knob Aerie No. 680
Ms. Patricia Rubley
Ms. Wanda L. Welcher

Ms. Nancy Jane (Tate) Blanton

Ms. Cindy Hirsch
Cheri and Phil Moran
Mr. J. Randy Snodgrass
Mr. Thomas J. Whitworth, Jr.

Mr. Stephen Ellis Boling

EAB Web Design Team
Dr. Mark P. Brooks and Dr. Susan Brooks
Ms. Margaret Campbell
Mrs. Susan C. Dillow
Mr. and Mrs. David E. Jones
Mr. and Mrs. Richard M. Kane
Mr. David Moran
Robert and Barbara Sheffield
Mrs. Lula Belle Shuler
Mr. and Mrs. Ben D. Skelley
Ms. Martha Skelley
Waynesboro Choral Society

Ms. Carolyn "Jelly" Moneymaker Brown

Mr. and Mrs. James W. Hinton
Mr. and Mrs. Ron Shifflett
Ms. Nancy Varner

Mr. Loren and Mrs. Dora Lee Brown

Ms. Agnes K. Simmons

Mr. Walter Thomas Brown

Calvary Baptist Church - Adult 3 Sunday
School Class
Mr. Gary J. Griffin
Mr. and Mrs. Lloyd S. Walker

Mrs. Millicent Hall Leach Brubeck

Mrs. Donna J. Pangburn
Mr. and Mrs. Robert F. Payne
Mr. Marcellus S. Rankin, Jr.
Mr. and Mrs. John W. Root
Ms. Rosemary L. Spell
Verona United Methodist - Open Door
Sunday School Class

Mr. Ronald "Ron" Bunch

Ms. Virginia F. Bunch
Mr. and Mrs. William H. Ferrier
Mr. and Mrs. Lewis T. Gurkin
Mrs. Norma L. Hayes

Mr. Kevin Keith Bunting

Elliott's Knob F.O.E. Aerie 680

Mr. and Mrs. McKinley Hall "Kenny" Burke

Bank Design & Equipment Inc.

Ms. Brenda Campbell

Ms. Margie L. Campbell

Mr. Charles Campbell

Ms. Margie L. Campbell

Mr. Frank Campbell

Ms. Margie L. Campbell

Mr. Jerald Lynn "Jerry" Campbell

Ms. Mary F. Byrd
Heatex Inc
Millboro Christian Church
TNT Logging LLC

Mr. Douglas Mitchell Carter

Mr. and Mrs. Paul P. Vames

Mrs. Katherine "Kit" Carter

Mr. and Mrs. Thomas C. Erskine
Mr. and Mrs. Frank J. McDonough, Jr.
RSC Real Estate Corporation

Ms. Mary C. Catherwood

Ms. Charlotte M. Kagey
Mrs. Susan C. Vernon

Ms. Shelva Jean (Marcum) Chadwell

Blue Ridge Appraisal Co. LLC

Mrs. Patricia "Patty" Gail Poole Chittum

Carolyn C. Herring, DMD

Ms. Betty J. Christie

Ms. Susan B. Obaugh

Ms. Margaret Mary Clemens

Mr. Edward Farrell

Mr. Larry Walter Clemmer

Ms. Kay G. Buchanan
Mr. and Mrs. W. J. Haynie III
Mr. and Mrs. Wayne Huffman
Mr. and Mrs. Ruffner Patterson

Mr. William Elton "Willie" Cline

Ms. Mertie L. Landram



Augusta Health supporters enjoying the Casino Night event

S & W Home Appliance Corporation
Mr. Edward L. Seay

Mr. James Newell Coble

Mr. and Mrs. Robert L. Anderson, Jr.
Mr. and Mrs. Gene Carpenter
Dental Health Associates
Mr. Bobby Whitescarver and Mrs. Jeanne T. Hoffman
Mr. and Mrs. Erich L. Kosowitz
Ms. Ruth H. Parsons
Mrs. Marion M. Phillips
Col. Hugh B. Sproul III
Mrs. Mary L. Welliver

Mr. Berman Cleo "Cotton" Coffey

Ms. Danielle E. Kelly

Mr. Douglas Wayne Colvin

Ms. Brenda Russell

Ms. Nancy Dane Conrad

Mr. and Mrs. Glen W. Patterson

Mr. Eugene W. "Tee" Cook

Ms. Rebecca Jones

Mr. Roy Cowan

Ms. Linda Armstrong
Mrs. Betty S. Carpenter
Mrs. Brigitte Cowan
Mrs. Charlotte N. Downing
Mr. and Mrs. Joe Harman
Mrs. and Mr. Debra Knight
Mrs. Monta Lucas
Mr. and Mrs. Paul Sorrell

Mr. John Robert "Johnny" Crawford

Mr. and Mrs. G. Raymond Curry
Mr. R. David Dove
Ms. Charlotte Fitzgerald
Mr. and Mrs. Thomas K. Fortune
Buddy Hutchens
Mr. and Mrs. Travis T. Hutchinson

REO Logistics

Ms. Gena Grace Crawley

First Baptist Church

Fred & Ann Davino

Mr. and Mrs. Frederick A. Davino

Mrs. Janet Louise Hardy Dawkins

Mr. Daniel Leech

Mr. Virgil Estil Delaney, Jr.

Mrs. and Mr. Joan E. Bissett
Mrs. Teresa A. Gant
Ms. Becky A. Ofiesh
Neighbors on Lydia Street, Ashland, Kentucky

Ms. Karen Elaine Snyder Digges

Home Instead Senior Care
Ms. Deloris Miller

Mr. Charles Owen Dillow

Mr. and Mrs. William E. Bayer
Ms. Charlotte A. Davis
Mr. and Mrs. Charles F. Dillow
Mr. and Mrs. Mark S. Richardson

Mrs. Debra Jean Dodge

Mr. Thomas D. Dodge, Jr.

Mr. Adren Clinebell Dodson

Ms. Gloria L. Dove
Mr. and Mrs. William A. Gentry
Geritol Gear Jammers Club
Mr. and Mrs. Edward F. Hawkins
Ms. Eleanor McCauley
Mrs. Martha J. McDonough
Mr. and Mrs. P. William Moore, Jr.
Mr. Thomas Niemann
Mrs. Lelia G. Scott
Mr. and Mrs. Thomas C. Sliwoski
Mr. and Mrs. John W. Stanton, Jr.
David Thompson and Family

Ms. Lois Buck Dollens

Ms. Stephanie D. Bickers
The Buck Family
Ms. Eva C. Dollens
Ms. Maureen S. McCusty
Mr. and Mrs. Herman Ritter

Ms. Nancy Humphreys Downey

Anonymous
Brown Insurance
Mrs. Charlotte N. Downing
Ms. Norma L. Hill
Mrs. Kathryn M. Humphreys
Mrs. Martha W. Robinson

Ms. Doris Doyle

Mr. and Mrs. Stephen D. Blevins
Mr. and Mrs. Harold Cook
Mr. Rodger A. Doyle
Mr. and Mrs. Ronald K. Duncan
Mr. Tracy Hunter
Robin Fowler State Farm
Mr. and Mrs. Daniel Ross

Mr. Ronald Mitchell Drawbond

Ms. Sally Culpepper
Mr. and Mrs. Gary W. Gearhart
Mr. and Mrs. William M. Hoover
Ms. Lois Smith
Mr. Thomas E. Snider

Mr. J. Morris Elliott

Ms. Tammy Bliss
Mr. and Mrs. Marsden E. Champaign
Ty Elliott's Bunco Group
Mr. and Mrs. Robert Stroube
Waynesboro Newcomers Club

Dr. David Gordon Elmes

Dr. and Ms. David G. Elmes

Ms. Marilyn Jane Emerson

Mr. and Mrs. Richard L. Hadden
Violet Marshall
Mrs. Nancy Moore
Mr. and Mrs. Daniel L. Snavely

Mr. Robert D. Euler

Mr. and Mrs. Robert B. Euler

Mr. Carl Hankins "Satch" Fix

Ms. Carolyn G. Fix

Mr. Thomas J. Foley, Jr.

Ms. Ronda L. Dearing
Mr. and Mrs. Neil F. Foley
Ms. Teresa A. Gonzalez
Mr. and Mrs. Arthur Guerrieri
Mr. and Mrs. Ronald Makosky
Mr. and Mrs. William L. Pfost
Ms. Marlene R. Reynolds

Mr. David Burnett Foster

Augusta Health Care, Inc.
Ms. Katharine B. Chase
Eckman Family Charitable Fund
Ms. Anne Foster
Ms. Brigitte V. Fresco
Augusta Health Mammography Department
Ms. Darcie Martin

Mrs. and Mr. Shirley M. Moore
Mr. Beryl E. Pealer
Ms. Katherine H. Ross
Mrs. Lisa A. Schmidt
Mr. and Mrs. W. T. Walton

Mr. Paul Erskine Fravel

Ms. Heber Coffey

Mr. Raymond Calvin "Ronnie" Fretwell

Mr. and Mrs. Robert S. Brooks
Mrs. Janet M. Fretwell
Mrs. Lynda F. Shifflett
Mr. and Mrs. Robert E. Yancey

Mr. Winton Mitchell Funk

Ms. Delores Hemskey
John and Cathy Matherly

Mrs. Lilah Cornelia (LaPorte) Goad

Ms. Dorothy M. Desper
Spring Hill Presbyterian Church

Mr. Herbert "Bud" Godschalk

Mr. and Mrs. Herbert L. Godschalk III

Ms. Elizabeth "Lib" Graham

Ms. Annie Sue H. Gaskins
Mr. and Mrs. Royce O. Gibson
Ms. Nancy K. Kimble
Mr. and Mrs. James K. Mathie
Ms. Jennifer Wafer

Mr. Nelson Lee Grove

Mr. and Mrs. Nelson R. Hiner
Mt. Vernon Church of the Brethren
Mr. and Mrs. Tom E. Sites

Mr. Samuel Eugene Grove

Mr. and Mrs. Albert Adamson
Ms. Patricia S. Austin
Mr. and Mrs. Michael G. Hamp
Ms. Gail Hundley
Mr. and Mrs. Donald A. Mastroiocco
Ms. Peggy M. Rule
Ms. Sharon B. Tooley
Mr. and Mrs. Michael E. Zelena

Ms. Sarah Gum

Ron and Sandy Knicely

Mrs. Edgar (McNeil) Hailey

Ms. Betty A. Atkins
Mr. and Mrs. Clarence M. Beard

Mrs. Lauren "Chipper" E. Hall

Mr. Mark Wells
Ms. Pamela H. Wells

Mrs. Peggy Pauline (Powell) Hall

Mr. and Mrs. Wayne Carter
Ms. Elaine A. Houff
Mr. and Mrs. Kirby L. Throckmorton

Ms. Sarah George Hall

Mr. Hugh C. Claggett, Jr.
Mr. and Mrs. Rodney C. Miano
Ms. Clarice C. Rodgers
Mr. and Mrs. David M. Smith

Mrs. Donna Rae (Pangle) Haney

Mr. and Mrs. Ralph Boyers
Bradford Area Christian Academy
Mr. and Mrs. Douglas B. Brevard

Mr. and Mrs. George E. Buzzard
Mrs. Marian J. Calder
Mr. Donald R. Campbell
Ms. Margaret Campbell
Ms. Elizabeth Follansbee
Mr. and Mrs. Douglas E. Johnson
Violet Marshall
Ms. Brenda F. Mawyer
Mr. and Mrs. Gregory S. McMahon
Ms. Theresa E. Morgoglione
Mr. and Mrs. Bradley P. Pangle
Mrs. Lucille J. Pangle
Mr. and Mrs. Michael Pangle
Mr. Harold Philippen
Ms. Lara S. Quinn
Mr. William T. Showker
Mr. and Mrs. Vince Tullo

Ms. Ardith Hanula

Michael and Patricia Abbott Giving Fund

Mr. Paul Harnad

Mrs. Beatrice J. Harnad

John & Carolyn Harrington

Mr. and Mrs. Frederick A. Davino

Mr. Lynden T. "Buck" Harris

Mr. and Mrs. Anthony S. Caywood
Mr. Walter L. Flora
Mr. and Mrs. John A. Goble
Mr. and Mrs. Charles E. Gowen
Dr. Carolyn H. Johnson
Mrs. Martha J. McDonough
Ms. Margery L. Turk

Mr. Jesse W. Hartman, Jr.

Ms. Cynthia A. Hasler
Ms. Nancy E. Trohaugh

Mrs. Martha C. Hartman

Anonymous

Mr. James Crawford Hayes, Jr.

Mrs. Norma L. Hayes

Mr. David Daniel Healy

Mr. Nolan B. Davis
Mr. Richard Healy
Ms. Amber Michael
Mr. and Mrs. John Moore
Ms. Kay Peruski
Mr. and Mrs. Todd Peruski
Mr. and Mrs. Gary L. Tyerary
E. Waterhouse

Mr. Robert Scott Hearn

Mr. David W. Desper
Warner Insurance Agency LLC
Ms. Wanda L. Welcher

Ms. Janine Riley Heitzenrater

Ms. Sherry P. Kingery

Mr. Bobby Wayne Henderson

Mr. and Mrs. Joseph Kennedy

Mrs. Patsy Henderson

Mr. Bobby Whitescarver and Mrs. Jeanne T. Hoffman
Ladies Auxiliary to Elliot's Knob Aerie
No. 680



Gary & Jean Wade and Doris & Dick Clark enjoying the festive President's Reception at the home of Mary Mannix and Frank Carey, December 2019

Mr. Donald Higgins

Mr. and Mrs. Ray W. Kidwell

Mr. Raymond Jack Higgs

Second Presbyterian Church
Mr. and Mrs. Michael E. Zelena

Ms. Joan Gale Hoover

Fisher Auto Parts, Inc.

Ms. Gertrude S. Hughes

Mr. William Anderson
Ms. Diane Boller
Bruce and Nancy Bowman
Mr. and Mrs. Lee W. Graber
The Graber Family
Mr. and Mrs. John C. Leffingwell
Ms. Sara M. Might
Mrs. Lynn T. Toth
Ms. Anne K. Vest

Ms. Jean P. Hughes

Mr. and Mrs. Chase D. Hughes

Ms. Barbara Elizabeth Humphrey

Mrs. Bonnie C. Grimm

Mr. William (Billy) Jay Humphreys III

Mrs. Helen Alger
Augusta Mutual Insurance Co.
Home Instead Senior Care
Ms. Inez L. Roadcap
Ms. Sara F. Snelson

Sarah and Bud Hutchens

Buddy Hutchens

Mr. Robert "Robbie" Arthur Hutchinson

Mr. Gary Fang

Ms. Mary Elizabeth "Corky" Johnson

The Gardner Family
The Ohlemeyer Family

Mr. Michael Stephan Jones

Augusta Health Care, Inc.

Ms. Gladys Kayton

Mr. and Mrs. Freddie Higgins

Mrs. Candace Kimmitt

Ms. Patricia S. Austin
Mrs. Bonnie W. Kimmitt

Mrs. Dorothy Alice Knott

Ms. Carolyn P. Howell
Mr. Carl L. Sheffer

Mr. Amos Lee Laine

Ms. Mattie G. Beale
Ms. Patricia A. Nicholas

Mr. John Gregory Lam

Dr. and Mrs. Michael A. Barrett
Mr. and Mrs. Don M. Campbell
Mr. and Mrs. James I. Chambers
Mr. and Mrs. Stephen L. Coffman
Mr. and Mrs. Harry H. Crosby
Mr. R. David Dove
Dr. Bob and Sharon Driscoll
Mrs. Nancy L. Duncan
Ms. Sandy Engle and Mr. Jeffrey Rosenbach
Mr. and Mrs. David A. Fike
Ms. Mariann Flynn
Mr. and Mrs. Lyle Hull
Mrs. Cheryl Jochen
Dorsey and Gudrun Kelly
Ms. Lela M. Kitts
Mr. Thomas Long
Mr. and Mrs. Alan Martin
Ms. Kellie J. Matthaideiss
Mr. and Mrs. Edgar Meyerhoeffer

Mr. and Mrs. Douglas R. Myers
Mr. and Mrs. William M. Nicholson, Jr. and Family
Mr. and Mrs. Bryan M. Quick
Ms. Mary C. Rainey
Mr. and Mrs. Gary L. Seek
Ms. Rita S. Shaver
Mr. Sanford H. Shoaf
Stonewall Rifle & Pistol Club Inc.
Mr. and Mrs. Gary W. Swats
Ms. Elaine Turville
Mr. and Mrs. Donald F. Weaver
Mr. and Mrs. James E. Wenger
Mr. and Mrs. David M. Zeiner

Mr. Harold Edward "Meatball" Landes

Ms. Peggy M. Brust
Mr. and Mrs. Richard M. Kane

Ms. Lynne Landsberg

Mr. Bruce D. Ward

Mrs. Nancy H. Laster

Mr. and Mrs. Julian W. Rittenhouse

Annie and Frank Lefler

Mrs. Sandra Botkin

Mr. Henry Leake Lilly

Antioch United Church of Christ
Mr. and Mrs. Chester L. Bradfield
Donovan's Used Cars
Dr. and Mrs. Roger H. Ford
Mr. and Mrs. Wendell L. Henkel
Ms. Gloria Horne
Ms. Carolyn Lilly
Ms. Lisa Lilly
Mr. and Mrs. Richard W. Liskey
Mr. and Mrs. Gordon W. Miller
Mr. and Mrs. Wilson C. Rader
Mr. and Mrs. Ronald W. Stover
Mr. and Mrs. Robert C. Tadlock
Mr. and Mrs. Wayne E. Waggy
WHBR, Inc./Blue Sky Radiator and Electrical Shop

Mrs. Geraldine Marie Lipscomb

Kimberly and Mike Zelena

Mr. Mark Sheldon Lowery

Augusta Health Care, Inc.
Mrs. Krista Buracker
Mr. and Mrs. Jerry L. Horn
Ms. LaVern McCarty

Ms. Virginia Marie (King) Lutz

Mrs. Bonnie R. Dodson
Ms. Gloria L. Dove
Mr. and Mrs. Arthur W. Hering
Mr. and Mrs. Otis W. Holley
Mr. and Mrs. Francis J. Horisk
Buddy Hutchens
Ladies Auxiliary to Elliot's Knob Aerie No. 680
Mr. Webb M. Lutz
Ms. Eleanor McCauley
Ms. K. Michelle Nuckols
Mr. and Mrs. Paul P. Vames

Mrs. Laura (Fisher) Luzaich

Degech America Inc.
Mr. and Mrs. Thomas E. Dewan
Mr. and Mrs. Jacob Shaner, Jr.
Mr. and Mrs. C. Elwood Whitmore
Ms. Nancy Yeaman

Mrs. Bernice T. Lyman

Mr. and Mrs. Bob Dunworth

Mr. Donald Nathaniel Mace, Sr.

Mrs. Barbara Einecker
Ms. Betty Robertson

Mr. Scott MacMillan

Mrs. Kym Eedy
Dr. Susan Jones
Mr. Vince Kimball
Ms. Laura McNaughton
Ms. Paula Smith
Mrs. Judy Ward

Mr. Wymer Wyche Manning, Jr.

Ms. Janet L. Jorgensen
Somos, Inc.
Mr. and Mrs. Stephen C. Tabscott

Mrs. Sue Ann (Robinson) Marion

Ms. Delores Long
Mr. Ralph B. Ostrander
Mr. Robert Ramsey

The Honorable John O. "Jack" Marsh, Jr.

Mary N. Mannix and Frank A. Carey

Mr. Clinton E. Martin

Mr. and Mrs. Dale L. Martin
Master Engineers and Designers

Mrs. Ruth D. Martin

Mr. and Mrs. William Pannill

Ms. Dawn M. Matheney-Spitler

Ms. Mary H. Matheney
Ms. Barbara Anne Mavis
Mr. and Mrs. Danny Copenhaver
Mr. and Mrs. J. M. Hinkle
Ms. Vickie L. McCullough
Mr. Brandon L. Seamster
Mr. and Mrs. Daniel A. Seamster
Sunshine Social Fund

Mr. Cecil Harold McPherson, Jr.

Mr. and Mrs. John W. Gettemy

Ms. Glenna Lucille Meade

Dixie Gas & Oil Corporation
Mr. Kenneth Earhart
Mr. and Mrs. James E. Estep
E.J. Meade
Ms. Gaytha Roby
Shenandoah Re-Cycling, Inc.
Walker Transportation Services, Inc.

Ms. Joan Taylor Meade

E.J. Meade

Ms. Lillian (Palmieri) Menelly

Mrs. Bonnie W. Kimmitt

Mrs. Jean (Malcolm) Michael

Ms. Susan A. Scharf

Ms. Donna Thompson Miller

Ms. Nina Knopp

Mr. Paul Syurs Mize, Jr.

Ladies Auxiliary to Elliot's Knob Aerie No. 680

Mr. Donald "Magoo" Montgomery

Mr. and Mrs. James C. Stinnett

Mrs. Annette "Bonnie" Y. Moore

Mr. and Mrs. Eddie Galvin

Mr. Wallace Eugene Morris

Ms. Debra A. Sprouse

Mr. William Page Morris

Ms. Cynthia Scheller
Mr. and Mrs. W. Scott Wilson

Mrs. Betty "Kaye" Mozingo

Mr. and Mrs. Charles P. Bilbrey
Ms. Greta B. Gayhart
Ms. Suzann L. Meyerhoeffer
Mr. and Mrs. Hal O'Quinn
Louise, Diana, and Peggy Renfroe
Mr. and Mrs. Glenn T. Smith
Ms. Daniele Wenger

Mrs. Ellen Lucile "Nell" Nicely

Mr. and Mrs. Emanuel J. Hewitt

Mrs. Teresa Carlton Orren

Ms. Ann Markwood

Mr. Philipp J. Ott

Ms. Lindy Lee Ott

Mr. Edwin Walter "Ed" Overton

Mr. and Mrs. Larry A. Washburn

Mrs. Eleanor Elizabeth (Dean) Patrick

Mr. Elwyn M. Bull, Jr.

Dr. James Patrick

Mr. Elwyn M. Bull, Jr.

Charles R. Pauly, MD

Mr. and Mrs. Thomas C. Erskine

Ms. Doris Pence

Ms. Sandra Motto

Mr. Lawrence Wesley Pennington

Ms. Sara Cohick and staff
Palmyra Church of the Brethren
Ms. Yvette T. Sholes

Mr. Edward Anthony Persina

Ms. Penelope Arms
Ms. Beth Hordines
Mr. and Mrs. Anthony R. La Padula
Ms. Frances Meyer
Ms. Suzanne Persina
Red Oaks Property Owners Association, Inc.
Mr. and Mrs. Peter J. Viola

Mrs. Fonda Persinger

Mrs. Darlene A. Strickler

Mr. Thomas Bransford "Tom" Peters

Centra Bedford Memorial Hospital Auxiliary
Mr. and Mrs. James C. Coffey
Mr. and Mrs. John P. Desmond
Mr. R. David Dove
Huffman Insurance Agencies Inc.
Buddy Hutchens
Ms. Judith R. Jarvis
Ms. Amy Laser Kiger

Mr. Ronald W. Mason
Mr. and Mrs. Edgar Meyerhoeffer
Neighbors on Woodland Drive
The Family of Tom Peters
Mrs. Susan M. Polly
Mrs. Frank Summers
Mr. and Mrs. Stephen C. Tabscott
Mr. and Mrs. Paul P. Vames
Mrs. Lauren H. Waters
White, Withers, Masincup & Cannaday, P.C.

Mr. Lafayette "Butch" Pinckney, Jr.
Mr. and Mrs. Houston G. Gaddy, Jr.
Mr. Randall Richards
Ms. Brenda Wargo

Reverend George William Polhill, Jr.
Ms. Eva T. Beach
Mr. and Mrs. Emerson L. Deitz
Ms. Gail P. Fox
Mr. and Mrs. H. W. Harouff
Mrs. Suzanne G. Meeks
Mrs. Sue C. Morley
Mrs. Joyce Ryder
Mr. and Mrs. Jacob Shaner, Jr.
Mr. and Mrs. Paul P. Vames
Mr. and Mrs. Robert H. Wease

Mr. Robert C. Powers, Jr.
Elizabeth and Harry Lumadue

Mr. Harold Messick Prettyman, Jr.
Mr. Rick Haas
Ms. Beverly Myers

Ms. Virginia Brown Quillen
Mr. and Mrs. James R. Boles
Karen and Charles Fairchilds
Mr. Walter L. Flora
Mr. Duncan Haggart
Ms. Lorain H. Kent
Mr. and Mrs. Joseph S. McLeod
Ms. Lillian Murray
Ms. Elizabeth T. Ruehl

Mrs. Jo Ann (Whitley) Ralston
Mr. and Mrs. Emerson L. Deitz
Mr. and Mrs. Matthew G. Deitz
Mr. Otis Huston
Rita Shaver and family

Mr. Larry Kincaid Ramsey
Valley Community Services Board

Mrs. Doris Jane (Spider) Rankin
Mr. and Mrs. Freddie L. Floyd
Mr. and Mrs. Lawrence E. Massey II
Ms. Cynthia R. Wade

Mr. Keith Rexrode
Ms. Christine Bradbury
Mr. Eddie Campbell
Ms. Dona Campbell Grisdale
Mr. and Mrs. Odell Langston
Linville-Edom Ruritan Club
Mr. and Mrs. Samuel Lyon
Mr. and Mrs. Jeffrey Roadcap
Ms. Alice H. Ruliffson
Mr. and Mrs. Donnie L. Shifflett

Mr. Walton K. Richardson
Mr. and Mrs. Thomas E. Dewan

Mr. Robert H. "Bob" Roberts, Jr.
Augusta Health Care, Inc.
Ms. Jean Depriest
Elliott's Knob F.O.E. Aerie 680
Warner Insurance Agency LLC

Ms. Annie Robertson
Ms. Linda Silling

Ms. Lauranna Lee (Elick) Robertson
Mr. and Mrs. James W. Clark
Innovative Refrigeration Systems, Inc.
Ms. Lorain H. Kent
Mr. and Mrs. David J. Lynch
Mr. and Mrs. Richard Miller
Mr. and Mrs. Lewis A. Whitmer

Mr. Charles Alfred Rowe, Jr.
Ms. Susan Wahlers

Mr. Jerry L. Santangelo
Mr. and Mrs. Richard M. Kane
Mr. and Mrs. Philip E. Nestor
Mr. Larry Wilson

Ms. Beverley Hedge Sapp
Mr. and Mrs. James V. Natale
Staunton Church of God

Ms. Carolyn Louise Schmid
Mr. Thomas Blunt
Mrs. Virginia Brown
Mr. and Mrs. James E. Glaspey
Mr. and Mrs. Kenneth W. Gray
Ms. Donna McCrumb
Mr. Ric Munoz
Ms. Ann C. Perry
Dr. Amy L. Spurlock
Ms. Barbara Thomas
United Network for Organ Sharing
Mrs. Amy Wolfe

Mr. Daniel Schorsch
Mrs. Ellen G. Schorsch

Mr. David Allen Schroeder
PEO Sisterhood 59 Chapter HJ-FL

Ms. Annette Elaine Schwartz
Mrs. Charlotte N. Downing
Dr. and Mrs. William B. Hanna, MD
Ms. Teresa Hupp and Mr. Thomas Byerly
Mr. and Mrs. David Surratt

Ms. Diane (Johnson) Scott
Augusta County Fair
Ms. Charlene Spears

Mr. Elmer Silas Shifflett
Augusta Health Care, Inc.
Mrs. Susan C. Dillow

Mrs. Geraldine Patterson Shifflett
Ms. Linda K. Shifflett

Mrs. Joyce Esther (Charles) Showalter
Ms. Norma L. Greenleaf
Mr. and Mrs. Earl Jones
Mrs. Leigh Ann Quesenberry
Mr. and Mrs. Robert S. Rader
Mr. and Mrs. Stephen C. Tabscott

Mr. Carl Glyndon "Buck" Simmers
Ms. LaVonne Cauthen
Elliott's Knob F.O.E. Aerie 680
Mr. Reed E. Graves, Jr.

Ms. Julia Kyle "Doots" (Hitt) Singers
Augusta Mutual Insurance Co.
Mrs. Charlotte N. Downing
Mr. and Mrs. David R. Metz

Mrs. Patricia Ann (Brown) Smiley
Ms. Jeanne McKenna

Mrs. Judy Ann (Washburn) Smith
Mr. Curtis J. Cupp
Mr. James E. Duncan
Ms. Joan M. Fink
Ms. Marguerite E. Floyd
Ms. Karen C. Hinkle
Mr. and Mrs. Barry D. Sensabaugh
Mr. and Mrs. James F. Smith
Ms. Patricia A. Smith
Mr. and Mrs. Larry A. Washburn

Mr. Richard W. Smith
Ms. Elizabeth W. Kirtz

Ms. Susan Snarr
Mrs. Dolores R. Snarr

Mrs. Sharon D. Sozanski
Mr. John P. Sozanski

Ms. Gwendolyn Elaine Spitzer
The Spitzer Family
Ms. Wanda L. Welcher

Mr. Lloyd Andres Stanley, Sr.
Mrs. Agnes H. Stanley

Mr. Harold Bruce Stepp
DuPont Community Credit Union
Mr. and Mrs. Dennis L. Stepp

Ms. Kathryn Stepp
Mr. and Mrs. Dennis L. Stepp

Mr. Charles Suderno
Ms. Nancy A. Carter

Ms. Laura Suderno
Ms. Nancy A. Carter

Ms. Shirley Suderno
Ms. Nancy A. Carter

Mrs. Diana Cline Summers
The Daniel Cline Family
The Jeff Cline Family
The Frank Summers Family

Mr. Robert Wesley Sumner
Mrs. Brenda Diehl

Mr. J. B. Swartz
Ms. Janet S. Swartz

Ms. Cynthia Bowles Sweet
Ms. Gladys M. Bowles

Mr. Robert A. Swiggett
Ms. Deborah Beales
Ms. Phyllis Howell
Ms. Mary S. Meyer

Ms. Rena Lee Massie Swink
Mr. and Mrs. John D. Vincent

Mrs. Betty Jean Campbell Taylor
DuPont Community Credit Union

Mrs. Geneva Spradlin Teter
Mr. and Mrs. Frank E. Teter, Jr.

Mrs. Beverly Jane (Baker) Thompson
Mr. and Mrs. Johnnie G. Anderson
Augusta County Democrats
Mr. Scott Kimmel
Ms. Sharon L. Mueller
Ms. Lois A. Sell
Ms. Patricia M. Snyder

Mrs. Edith Thompson
Mr. and Mrs. Dale L. Martin

Mr. John A. Thompson
Elliott's Knob F.O.E. Aerie 680

Mr. Ray Curtis Thompson
Mr. and Mrs. Marc Porter

Mr. Thomas and Mrs. Suzanne Thompson
Ms. Judy Scotto

Dr. William "Bill" Nicholas Toomy
Mrs. Patricia S. Austin

Mr. Edward R. Urbanski
Ms. Linda L. Doran
Mrs. Christine O'Connor
Ms. Angela Weisenberger

Mr. Rudolf "Rudi" P. Vrugtman
Ms. Sarah S. Andre
Ms. Karen Auriti
Ms. Ann C. Fisher
Mr. Warren Groeger
Ms. Geraldine D. Kruger
Mr. Irwin Neufeld
Mr. and Mrs. Thomas R. Schnell II

Mr. James Wade
Mr. Littleton Roden

Mr. James Mitchell "Jimmy" Wade, Sr.
Mr. and Mrs. Thomas K. Fortune
Mr. and Ms. Gary Layne
Mr. and Mrs. Eugene H. Mooney
Mr. and Mrs. Bland M. Wade

Mr. Herbert Hoover Walge
Mr. and Mrs. Kenneth L. Elmore
Mr. and Mrs. Jacob Shaner, Jr.
Ms. Lisa Sockett
Mr. and Mrs. Paul P. Vames

Mrs. Mary Margaret (Moses) Wampler
Mr. and Mrs. J. Vern Fairchilds, Jr.
Ms. Flora Williams

Mr. John E. Ward
Mr. Mark Hunter
Mr. and Mrs. Micheal E. Martin

Mr. Larry William Ward
Anonymous
Ms. Kay G. Buchanan
Mr. and Mrs. Raider W. Campbell
Chernyvale United Methodist Choir
Ms. Sandra K. Coffman
Mr. and Mrs. Gayland R. Davis
Mr. David W. Desper
Mrs. Bonnie R. Dodson
Mr. R. David Dove
Mr. and Mrs. O. George Drummond

Mr. and Mrs. Lynwood L. Dull
Mr. and Mrs. Stephen B. Edwards
Mr. and Mrs. Kenneth L. Elmore
Ms. Sandy Engle and Mr. Jeffrey Rosenbach
Mrs. Gail Finnegan
Greater Augusta Association of Realtors
Mr. and Mrs. Max Hirtriter, Jr.
Mr. David P. Hope
Dorsey and Gudrun Kelly
Ms. Eleanor McCauley
The Meados Family
Mr. and Mrs. Robert C. Miller
Ms. Sarah A. Motley
The Mungovan Family
Old Dominion Realty
Mr. and Mrs. Edward D. Perry
Mr. and Mrs. Jerry L. Reeves
Ms. Rhonda Richie
Mrs. Shirley D. Robinson
Ms. Karen H. Rodgers
S & W Home Appliance Corporation
Mr. and Mrs. Jeffrey S. Saul
Ms. Rita S. Shaver
Mr. and Mrs. Rick Smith
Mr. and Mrs. Gary W. Swats
The Tobin Family
Mr. Duane Turner
Mrs. Suzie VanValkenburg

Mr. Willard "Jack" Watson
Mr. and Mrs. Roderick A. Young

Mr. John M. Weatherly
Ms. Kathleen W. Marshall

Mrs. Ruth Templeton (Knight) Weaver
The Family of Ruth Weaver

Mr. James "Bill" M. Webb
Ms. Lena C. Robertson

Mrs. Virginia Wetzel
Ruth and Joe Molony
Dr. and Mrs. George T. Sproul
Mr. and Mrs. Robert Wetzel, Jr.

Mrs. Mary Margaret (Tackett) Wheeler
Stuarts Draft Middle School

Mrs. Betty Ann Desper Wikel
Mr. William L. Wikel, Jr.

Mrs. Jane H. Wild
Mr. and Mrs. Jerry Clysdale
Ms. Margaret A. Hogan
Ms. Jeanne Ravich

Mr. Beverley Nelson "Ben" Wilkerson, Jr.
Baldwin Park Residents Association

Mrs. Inez S. Wine
Mr. and Mrs. Emanuel J. Hewitt

Mr. and Mrs. Thomas Lee Wood
Mrs. Dinah L. Wood

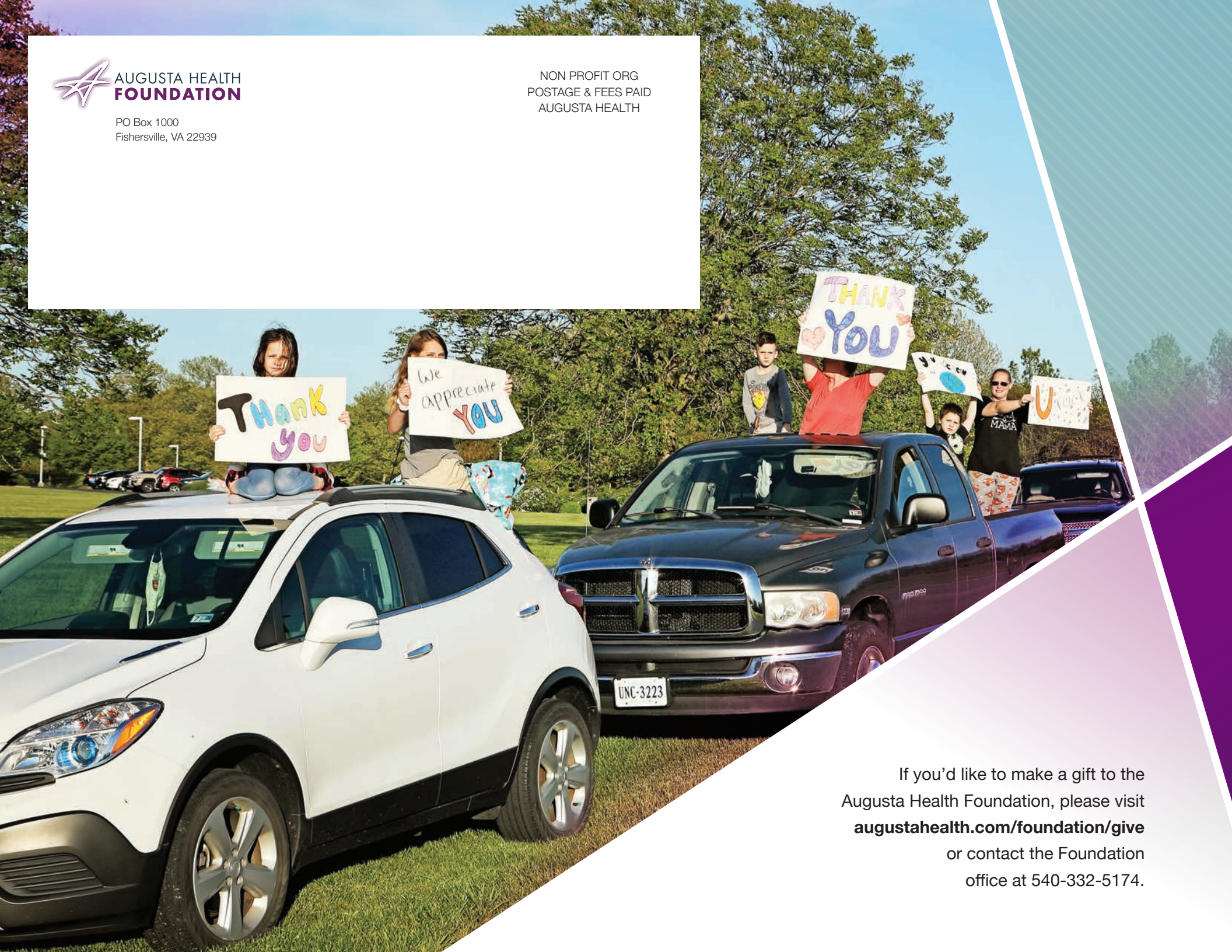
Mr. Thomas "Tom" Wayne Wood
Mr. and Mrs. William F. Sibert



**AUGUSTA HEALTH
FOUNDATION**

PO Box 1000
Fishersville, VA 22939

NON PROFIT ORG
POSTAGE & FEES PAID
AUGUSTA HEALTH



If you'd like to make a gift to the
Augusta Health Foundation, please visit
augustahealth.com/foundation/give
or contact the Foundation
office at 540-332-5174.